

10 9 8 7 6 5 4 3 2 1



Brady Sullivan Properties  
670 N. Commercial Street  
Manchester, nh 03101  
603.622.6223



Owner  
**BRADY SULLIVAN  
PROPERTIES**  
MANCHESTER NH  
NH

Project  
**2 COMMERCE DRIVE**  
BEDFORD, NH

**SUITE  
206 & 210  
14,875 SF**

Seals

Issues	
Date	Description

Revisions		
No.	Date	Description

Drawing Title

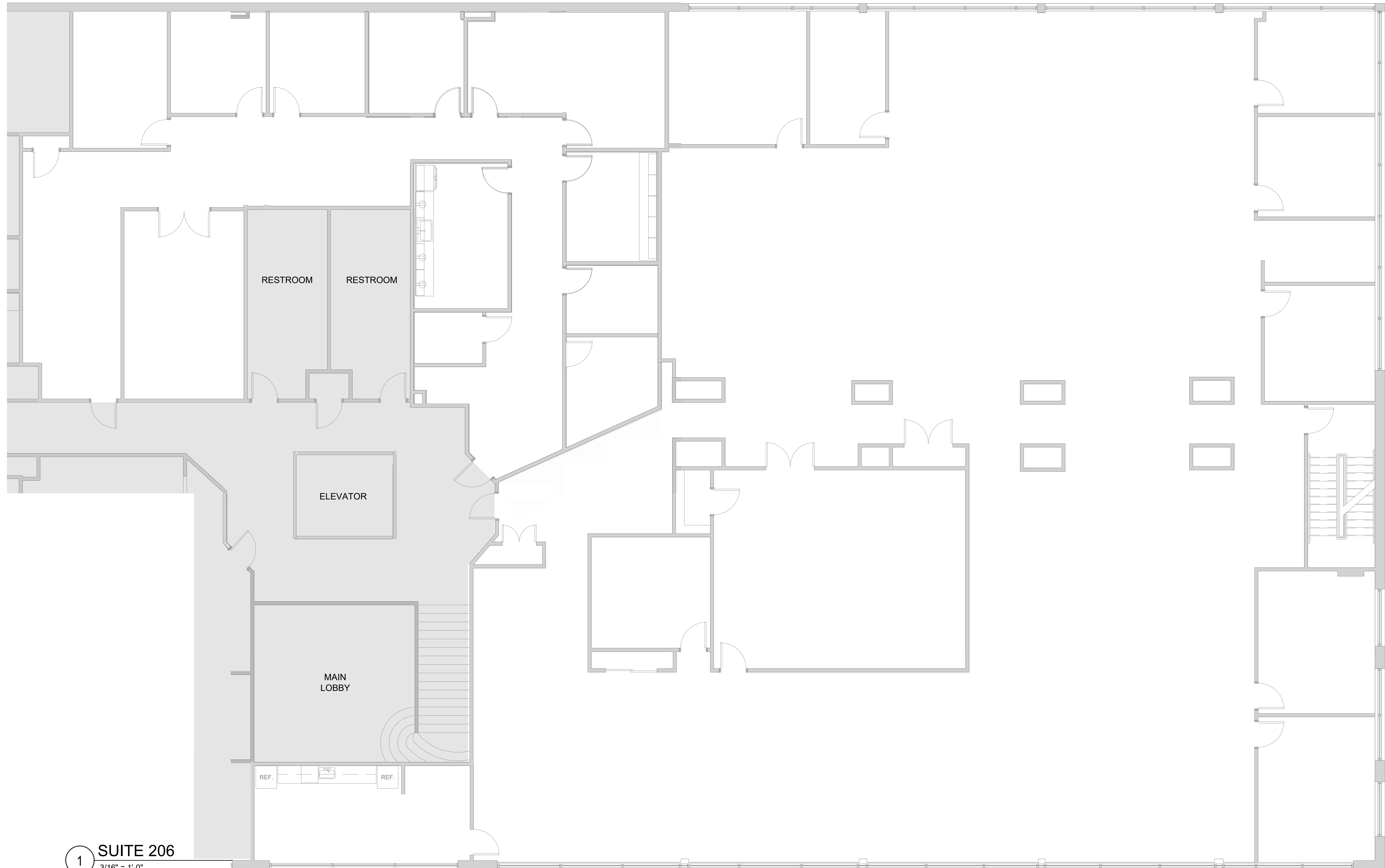
Issue Date:	6-17-2021
Project No:	Scale: As Indicated
Project Manager:	Production Leader:
Project Architect:	Peer Reviewer:

Drawing Number

**A.110**

### LEGEND

	NOT IN SCOPE		PROPOSED ITEMS (HEAVY LINE WEIGHT)
	EXISTING ITEMS		EXISTING DOOR AND FRAME TO REMAIN
	NEW DOOR AND FRAME		DEMO ITEMS



1 SUITE 206  
3/16" = 1'-0"

10 9 8 7 6 5 4 3 2 1

1/24/2023 11:26:32 AM