



Brady Sullivan Properties
670 N. Commercial Street
Manchester, nh 03101
603.622.6223

PROPERTY OF THE UNITED STATES GOVERNMENT
COPYING, DISSEMINATION, OR DISTRIBUTION OF
THESE DRAWINGS, PLANS, OR SPECIFICATIONS TO
UNAUTHORIZED PERSONS IS PROHIBITED
Do not remove this notice. Properly destroy documents
when no longer
needed.

© 2015 Brady Sullivan Properties

Owner
**BRADY SULLIVAN
PROPERTIES**
MANCHESTER,
NH

Project
2 COMMERCE DRIVE
BEDFORD, NH

Seals

Issues	
Date	Description

Revisions		
No.	Date	Description

Drawing Title
SUITE 202
1,448 RSF

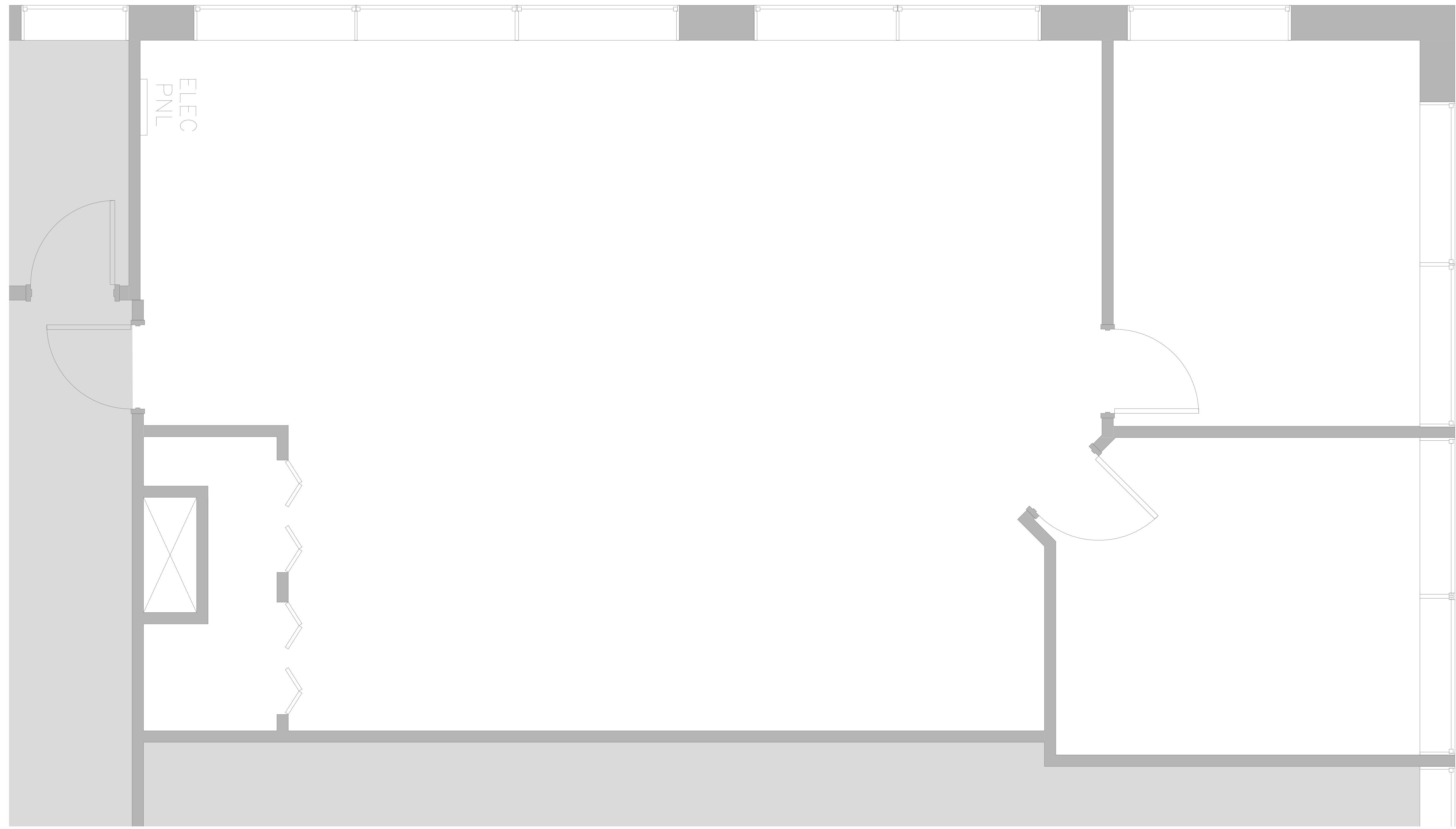
Issue Date:	
Project No:	Scale: As indicated
Project Manager:	Production Leader: SP
Project Architect: RO	Peer Reviewer: CL

Drawing Number
A0.1

LEGEND

	NOT IN SCOPE		PROPOSED ITEMS (HEAVY LINE WEIGHT)
	EXISTING ITEMS		EXISTING DOOR AND FRAME TO REMAIN
	NEW DOOR AND FRAME		DEMO ITEMS

1
1/2" = 1'-0"
SUITE 202 - FLOOR PLAN



9/9/2016 11:11:19 PM