

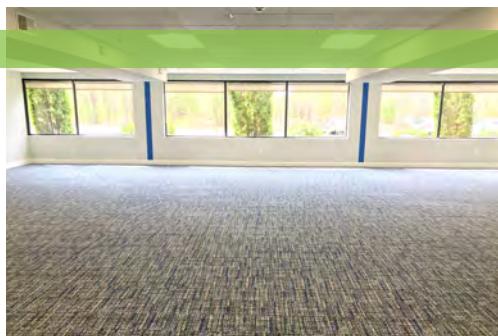
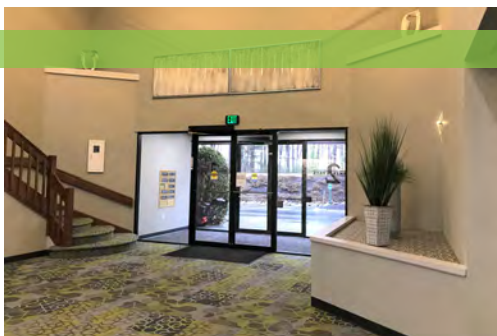
OFFICE SPACE FOR LEASE

2 COMMERCE DRIVE | BEDFORD, NH

Now Fully Occupied!

FEATURES

- ✓ Renovated Common Areas
- ✓ Prominent Visibility & Signage
- ✓ Abundance of FREE Parking



www.bradysullivan.com



670 N. Commercial Street, Suite 303
Manchester, NH 03101
603-622-6223

BRADY • SULLIVAN
P R O P E R T I E S

2 COMMERCE DRIVE | BEDFORD, NH

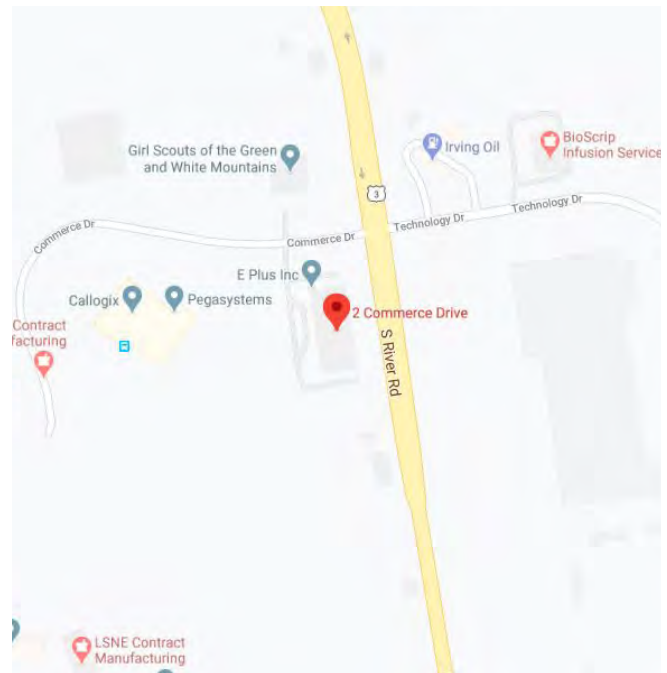
Brady Sullivan is please to present for lease, 2 Commerce Drive in Bedford, NH. This 48,200 SF, 2 story Class A facility boasts excellent window lines and a impressive 2 story foyer.

This building is located approximately 1 mile from the airport access road and is close to numerous amenities. The site boasts impeccable landscaping, ample parking and excellent exposure. Brady Sullivan also offers in-house planning and design services at no charge.

SPECIFICATIONS

BUILDING AREA:	48,200 +/- SF
LAND AREA:	3.067 acres
ZONING:	P-2 Performance Zone
YEAR BUILT:	1989
STORIES:	2
ELEVATORS:	Yes
CONSTRUCTION:	Brick/Block
ROOF:	Rubber membrane/balasted
LIGHTING:	Fluorescent fixtures
LOADING:	Yes
WATER/SEWER:	Municipal
GAS:	Municipal
ELECTRIC:	PSNH, 2500 AMP- 120/240/208 V
PARKING:	Ample
FIRE SAFETY:	Wet Sprinkler

*Fiber optics available



All information is believed to be accurate at time of printing. This brochure is subject to errors, omissions, change of price, rental or other conditions.

BRADY SULLIVAN P R O P E R T I E S

For more information, please contact:

Charles Panasis

603-799-6926 cpanasis@bradysullivan.com

Derek Lawton

978-319-2508 dlawton@bradysullivan.com

James Tobin

603-315-4668 jtobin@bradysullivan.com

Jamison Bibaud

603-715-6652 jbibaud@bradysullivan.com