



Brady Sullivan Properties
670 N. Commercial Street
Manchester, nh 03101
603.622.6223

Notice:
This drawing is the property of Brady Sullivan Properties. The use, re-use or reproduction of this drawing for any purpose whatsoever without an expressed written agreement between BSP and the user is prohibited.
Rights to use the information on this sheet are not transferred until payment has been received for services rendered. Any rights so granted are non-transferable to other parties without the prior expressed written consent of BSP.

© 2015 Brady Sullivan Properties

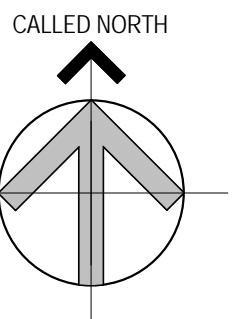
Owner

**BRADY SULLIVAN
PROPERTIES**

Project

CENTER OF KEENE

149 EMERALD STREET KEENE, NH



Seals

0%

Issues

Date	Description

Revisions

No.	Date	Description

Drawing Title

SUITE D-2

1,146 RSF

Issue Date: 03.07.2014

Project No: 1106 Scale: 1/2" = 1'-0"

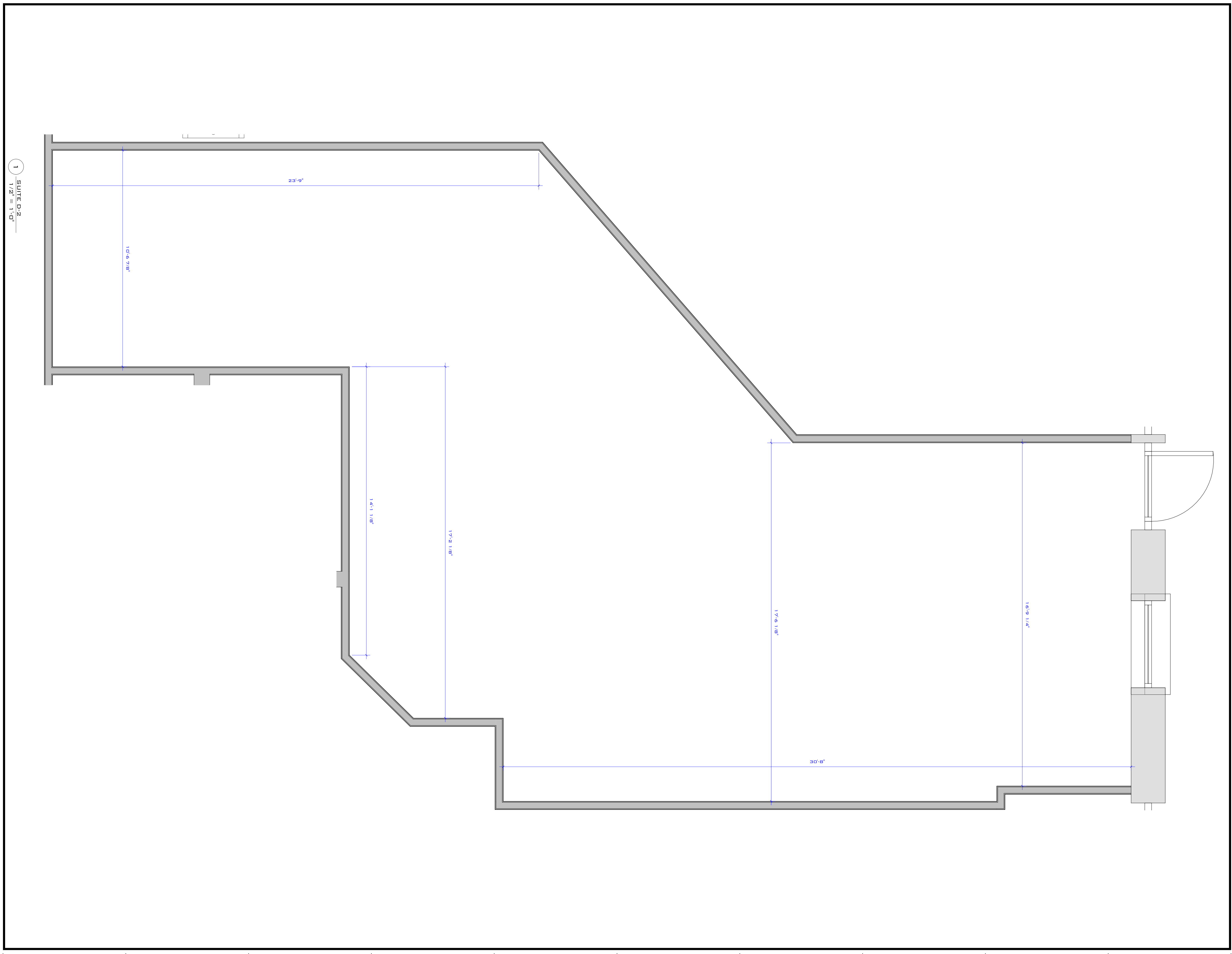
Project Manager: Production Leader:

Project Architect: Peer Reviewer:

Drawing Number

A0-23

5/17/2016 10:31:04 AM





Brady Sullivan Properties
670 N. Commercial Street
Manchester, nh 03101
603.622.6223



Owner
**BRADY SULLIVAN
PROPERTIES**

Project
CENTER OF KEENE

149 EMERALD STREET KEENE, NH

Seals
0%

Issues	
Date	Description

Revisions	
No.	Date

Drawing Title
SUITE D2A

1,053 SF

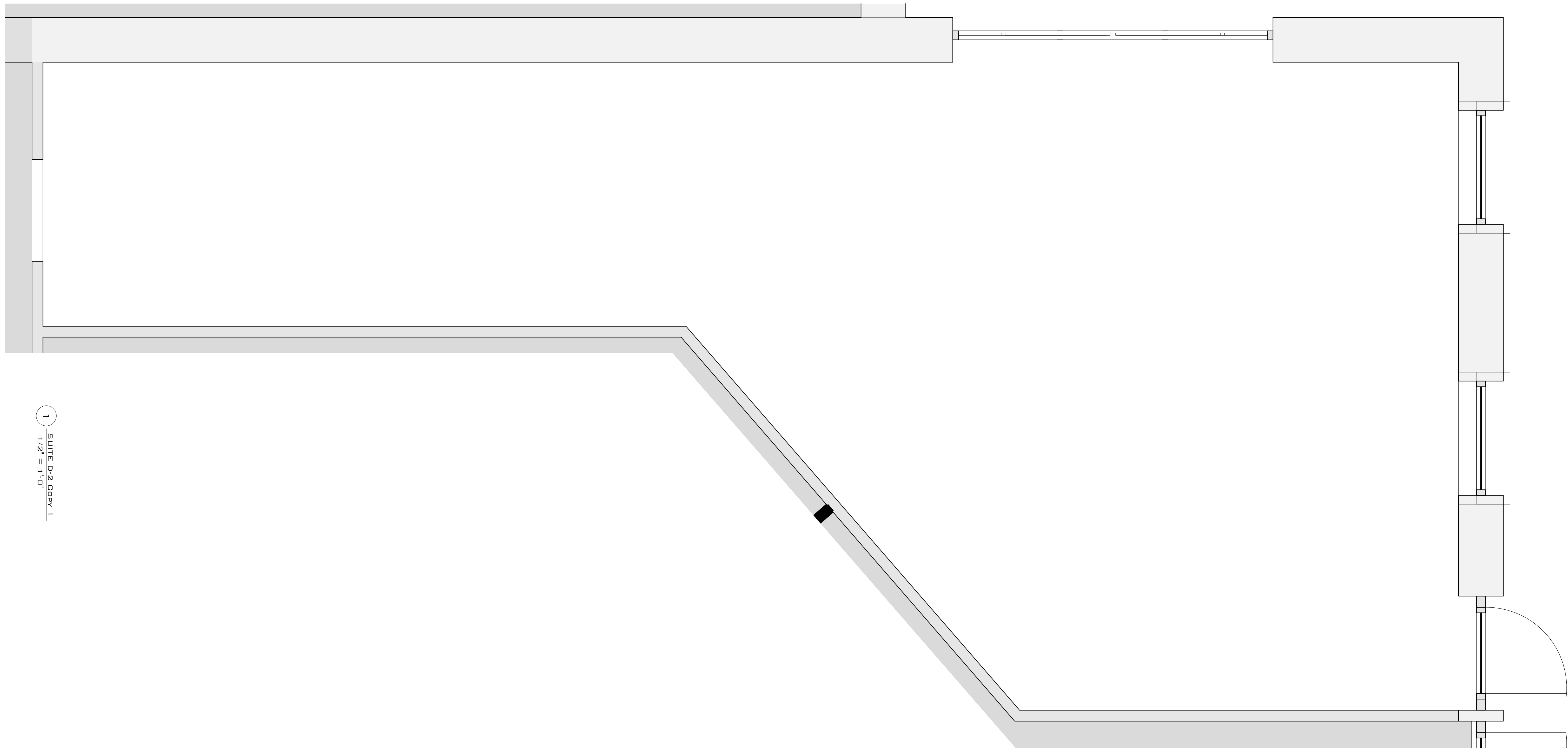
Issue Date: 12-20-2017

Project No: 1106 Scale: 1/2" = 1'-0"

Project Manager: Production Leader:

Project Architect: Peer Reviewer:

Drawing Number
A0-16



1 SUITE D-2 Copy 1
1/2" = 1'-0"

DISCLAIMER: ALL BUILDOUT IS BASED ON BRADY SULLIVAN PROPERTIES "CONSTRUCTION STANDARDS".
BRADY SULLIVAN PROPERTIES RESERVES THE RIGHT TO ISSUE A CHANGE ORDER FOR ADDITIONAL WORK
NOT INCLUDED IN DRAWINGS.



Brady Sullivan Properties
670 N. Commercial Street
Manchester, nh 03101
603.622.6223



Owner
**BRADY SULLIVAN
PROPERTIES**

Project
CENTER OF KEENE
149 EMERALD STREET KEENE, NH

Seals
0%

Issues	
Date	Description

Revisions		
No.	Date	Description

Drawing Title
SUITE G2
654 RSF

Issue Date: 12-15-2016

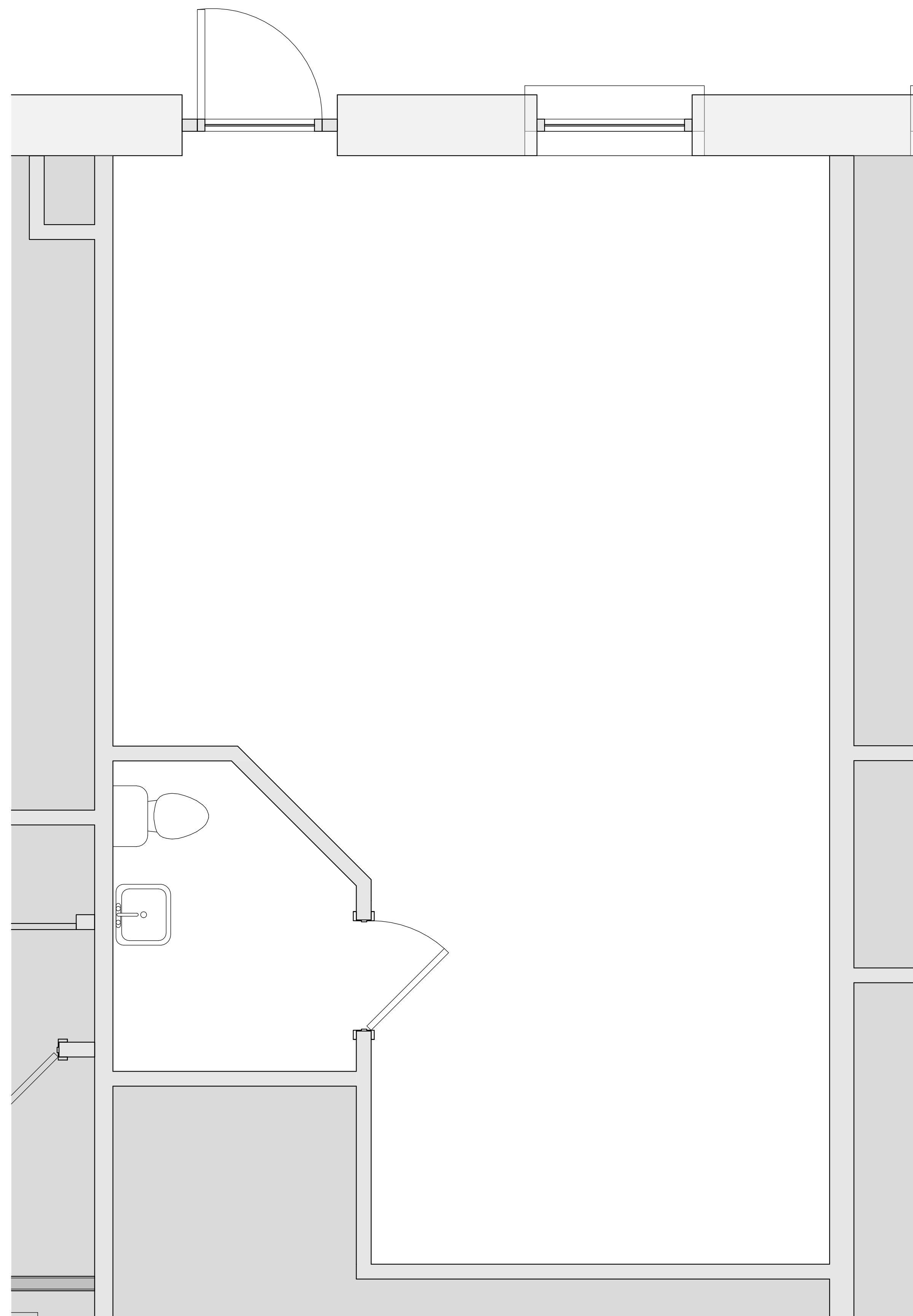
Project No: 1106 Scale: As indicated

Project Manager: Production Leader:

Project Architect: Peer Reviewer:

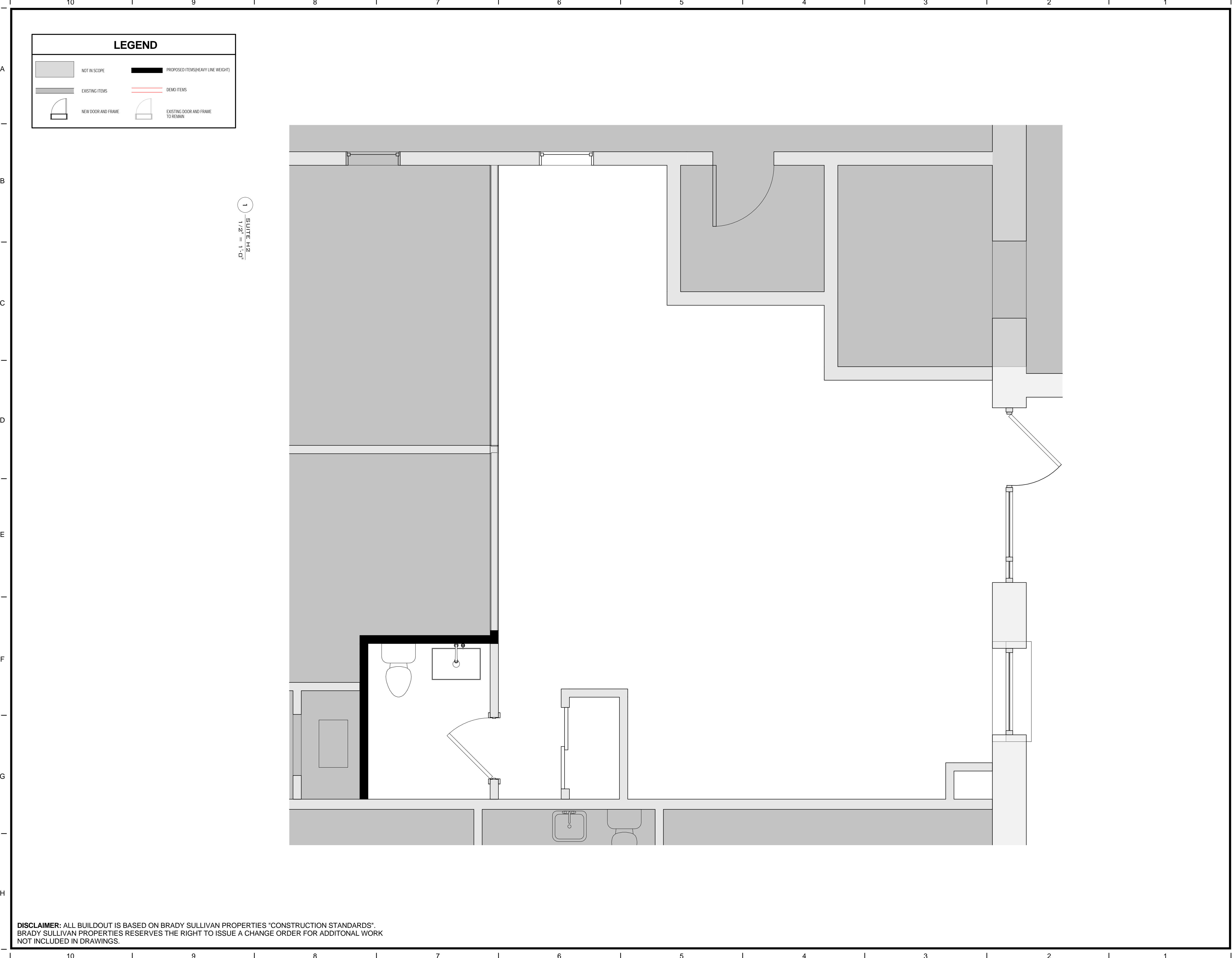
Drawing Number
A0-14

LEGEND			
	NOT IN SCOPE		PROPOSED ITEMS (HEAVY LINE WEIGHT)
	EXISTING ITEMS		DEMO ITEMS
	NEW DOOR AND FRAME		EXISTING DOOR AND FRAME TO REMAIN



1 SUITE G
1/2" = 1'-0"

DISCLAIMER: ALL BUILDOUT IS BASED ON BRADY SULLIVAN PROPERTIES "CONSTRUCTION STANDARDS". BRADY SULLIVAN PROPERTIES RESERVES THE RIGHT TO ISSUE A CHANGE ORDER FOR ADDITIONAL WORK NOT INCLUDED IN DRAWINGS.



Brady Sullivan Properties
 670 N. Commercial Street
 Manchester, nh 03101
 603.622.6223



Owner
BRADY SULLIVAN PROPERTIES

Project
CENTER OF KEENE
 149 EMERALD STREET KEENE, NH

Seals
 0%

Issues	
Date	Description

Revisions	
No.	Date

Drawing Title
SUITE H
825 RSF

Issue Date:	12-15-2016
Project No:	1106
Scale:	As indicated
Project Manager:	Production Leader:
Project Architect:	Peer Reviewer:

Drawing Number
A0-27

DISCLAIMER: ALL BUILDOUT IS BASED ON BRADY SULLIVAN PROPERTIES "CONSTRUCTION STANDARDS". BRADY SULLIVAN PROPERTIES RESERVES THE RIGHT TO ISSUE A CHANGE ORDER FOR ADDITIONAL WORK NOT INCLUDED IN DRAWINGS.

12/15/2016 12:36:44 PM