



## ADDRESS

300 Canal Street, Lawrence, MA 01840

**CALL NOW TO SCHEDULE YOUR PERSONAL TOUR**

**978-655-6581**

APPLY NOW AT

Phase I : [www.bradysullivan-pacificmilllofts.leasingmanager.net](http://www.bradysullivan-pacificmilllofts.leasingmanager.net)

Phase II: [www.bradysullivan-pacificmillloftsII.leasingmanager.net](http://www.bradysullivan-pacificmillloftsII.leasingmanager.net)

**BRADY SULLIVAN**  
P R O P E R T I E S

## PACIFIC MILL *Lofts*



Marketed by:

**BRADY SULLIVAN PROPERTIES, LLC**

670 N. Commercial Street, Suite 303 Manchester, NH 03101

Telephone: 978-655-6581

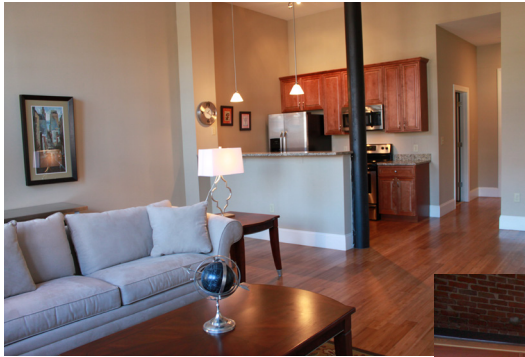
Email: [PacificMillLofts@BradySullivan.com](mailto:PacificMillLofts@BradySullivan.com)

APPLY NOW AT

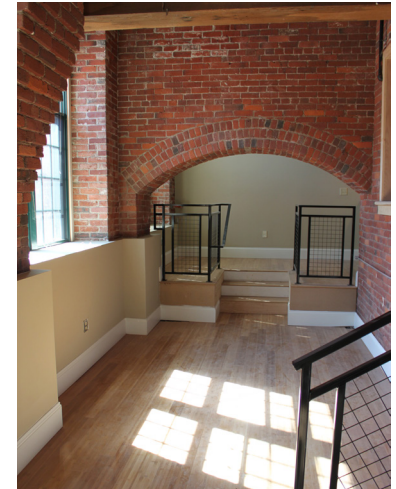
Phase I : [www.bradysullivan-pacificmilllofts.leasingmanager.net](http://www.bradysullivan-pacificmilllofts.leasingmanager.net)

Phase II: [www.bradysullivan-pacificmillloftsII.leasingmanager.net](http://www.bradysullivan-pacificmillloftsII.leasingmanager.net)

[www.PacificMillLofts.com](http://www.PacificMillLofts.com)



- Washer/dryer in every unit
- On-site storage
- Pet friendly



**PACIFIC MILL**  
*Lofts*

The historic Pacific Mill Lofts have been newly renovated into beautiful and unique 1, 2 & 3 bedroom loft apartments featuring exposed brick and beams, original wood floors, soaring ceilings, and bright oversized windows for the ultimate in chic loft-style living!



Located on the banks of the Merrimack River, Pacific Mill Lofts is the perfect combination of past and present with gleaming granite countertops, sleek stainless steel appliances and sophisticated designer paint colors.