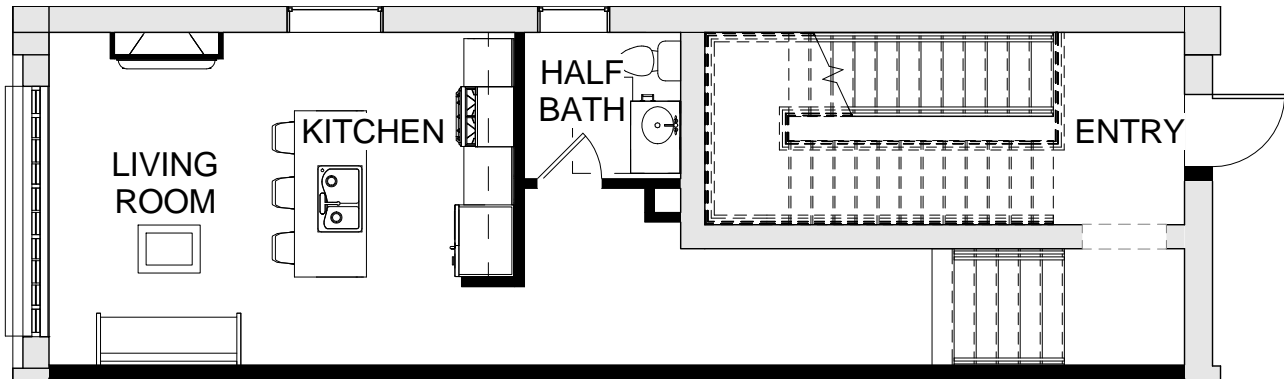


**SECOND FLOOR**



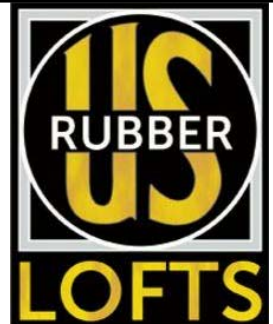
**FIRST FLOOR**

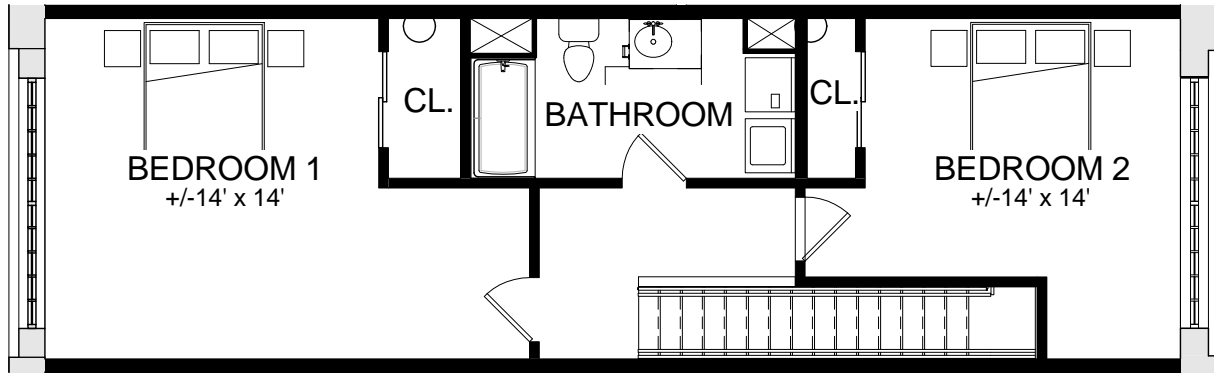
Drawing Title:  
**UNIQUE UNIT 101 - 1,344 SQFT**

DWG No: **A6-1**  
 Date: 06/1/17  
 Scale: 1/8" = 1'-0"

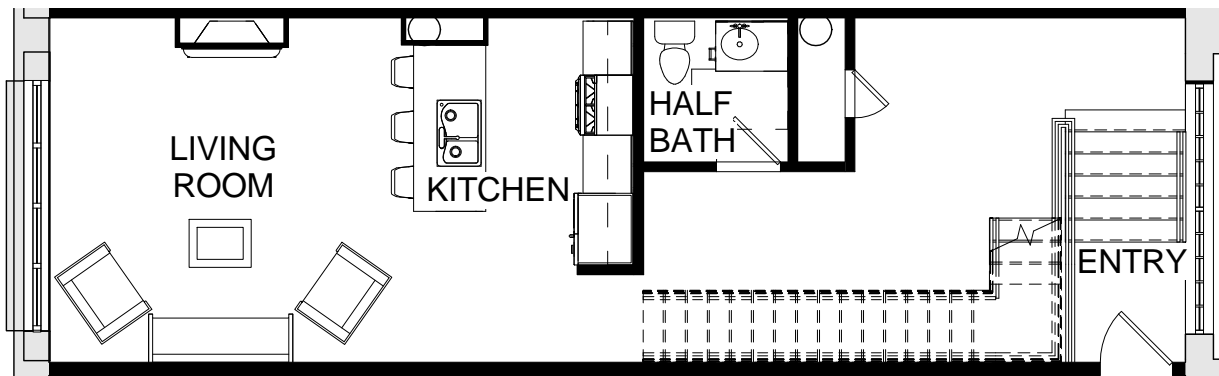
Project:  
**BUTCHER BLOCK**  
 EAGLE STREET, PROVIDENCE, RI

**BRADY•SULLIVAN**  
 670 N. COMMERCIAL ST.  
 MANCHESTER, NH 03101  
 603.6226223






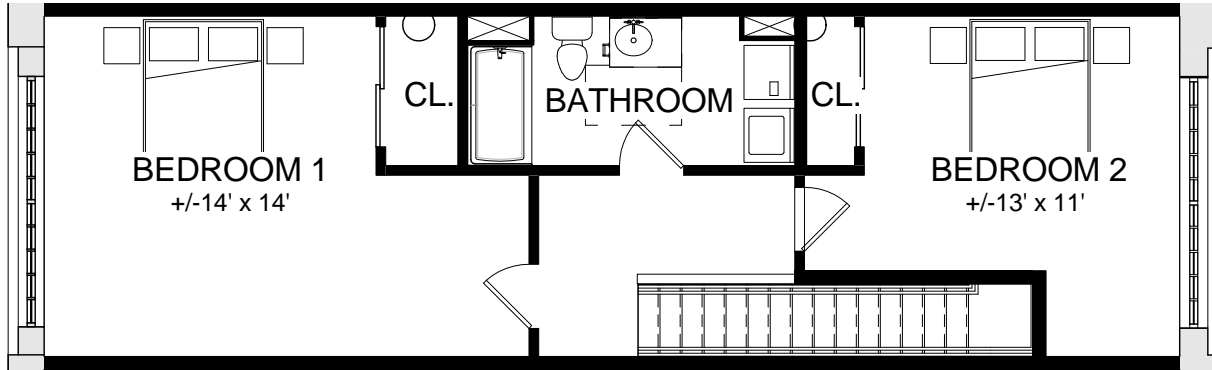
**SECOND FLOOR**



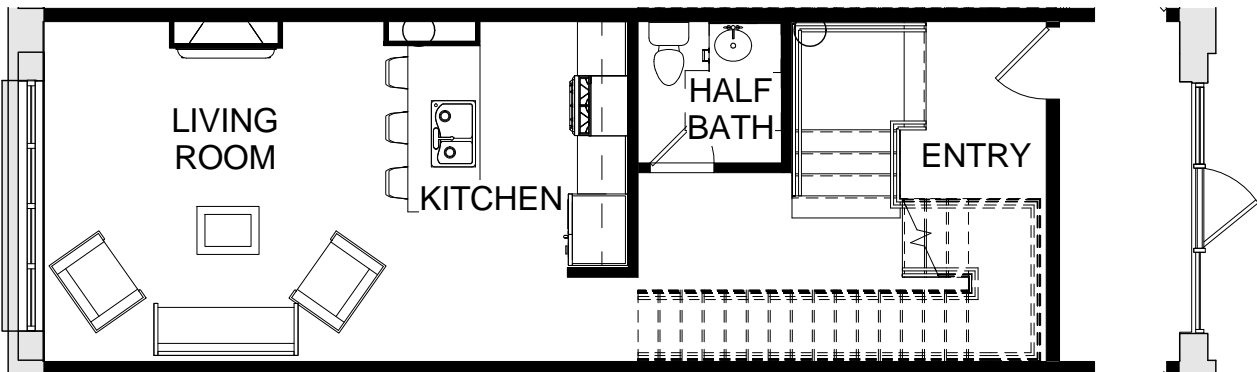
**FIRST FLOOR**

**SIMILAR TO UNIT 102 - 106**

<p>Drawing Title: <b>TYPICAL UNIT A - 1,400 SQFT</b></p>	<p>DWG No: <b>A6-2</b> Date: 06/1/17 Scale: 1/8" = 1'-0"</p>	
<p>Project: <b>BUTCHER BLOCK</b> EAGLE STREET, PROVIDENCE, RI</p>	<p><b>BRADY•SULLIVAN</b> 670 N. COMMERCIAL ST. MANCHESTER, NH 03101 603.6226223</p>	



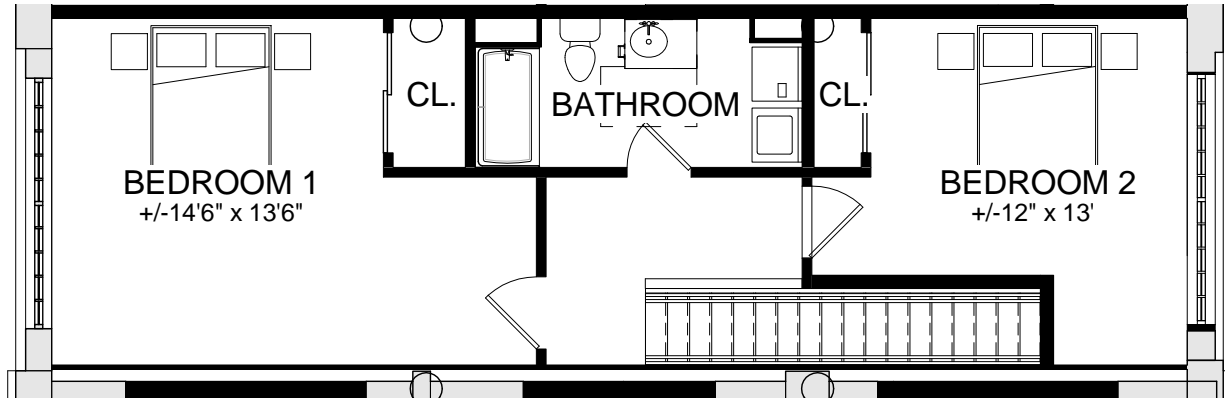
**SECOND FLOOR**



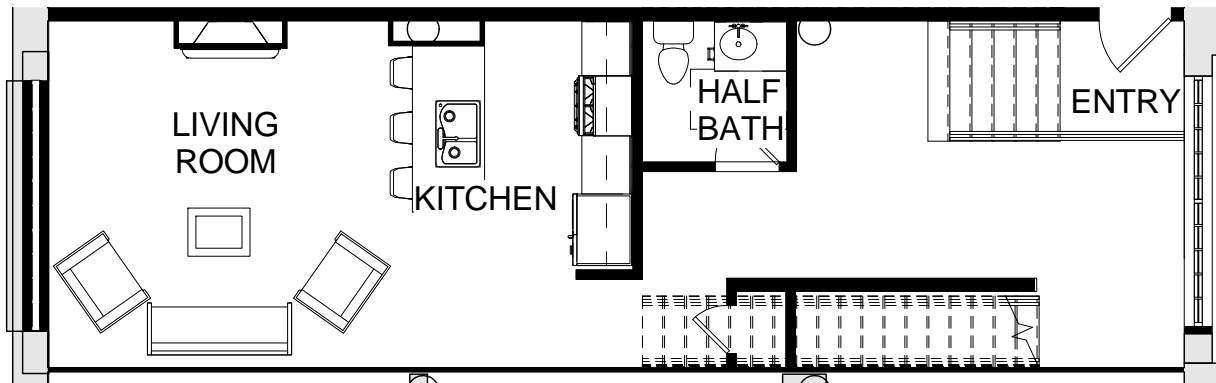
**FIRST FLOOR**

**SIMILAR UNITS 103 - 104 - 107**

<p>Drawing Title: <b>TYPICAL UNIT B - 1,318 SQFT</b></p>	<p>DWG No: <b>A6-3</b> Date: 06/1/17 Scale: 1/8" = 1'-0"</p>	
<p>Project: <b>BUTCHER BLOCK</b> EAGLE STREET, PROVIDENCE, RI</p>	<p><b>BRADY•SULLIVAN</b> 670 N. COMMERCIAL ST. MANCHESTER, NH 03101 603.6226223</p>	



**SECOND FLOOR**



**FIRST FLOOR**

**SIMILAR TO UNIT 105 - 108**

Drawing Title:  
**TYPICAL UNIT C - 1,410 SQFT**

DWG No: **A6-4**

Date: 06/1/17

Scale: 1/8" = 1'-0"

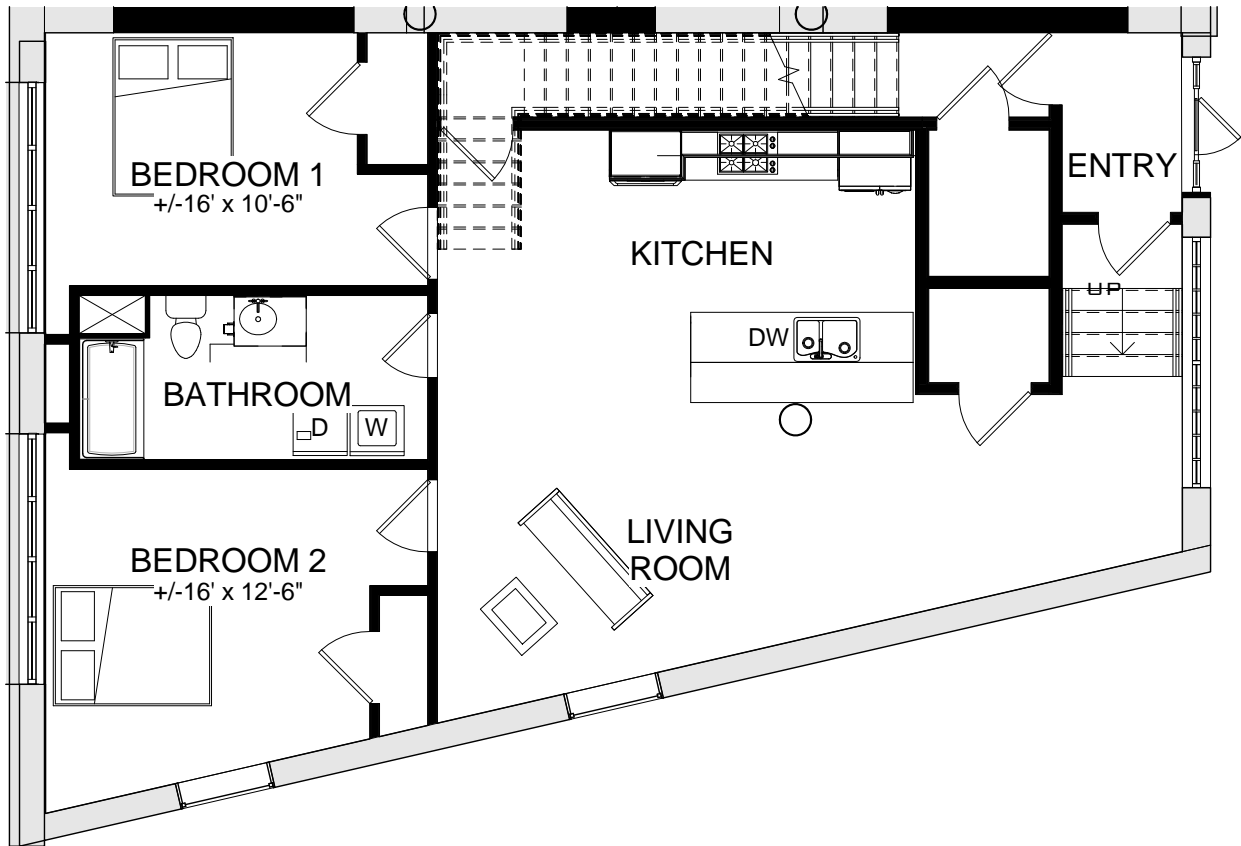
Project:  
**BUTCHER BLOCK**

EAGLE STREET, PROVIDENCE, RI

**BRADY•SULLIVAN**

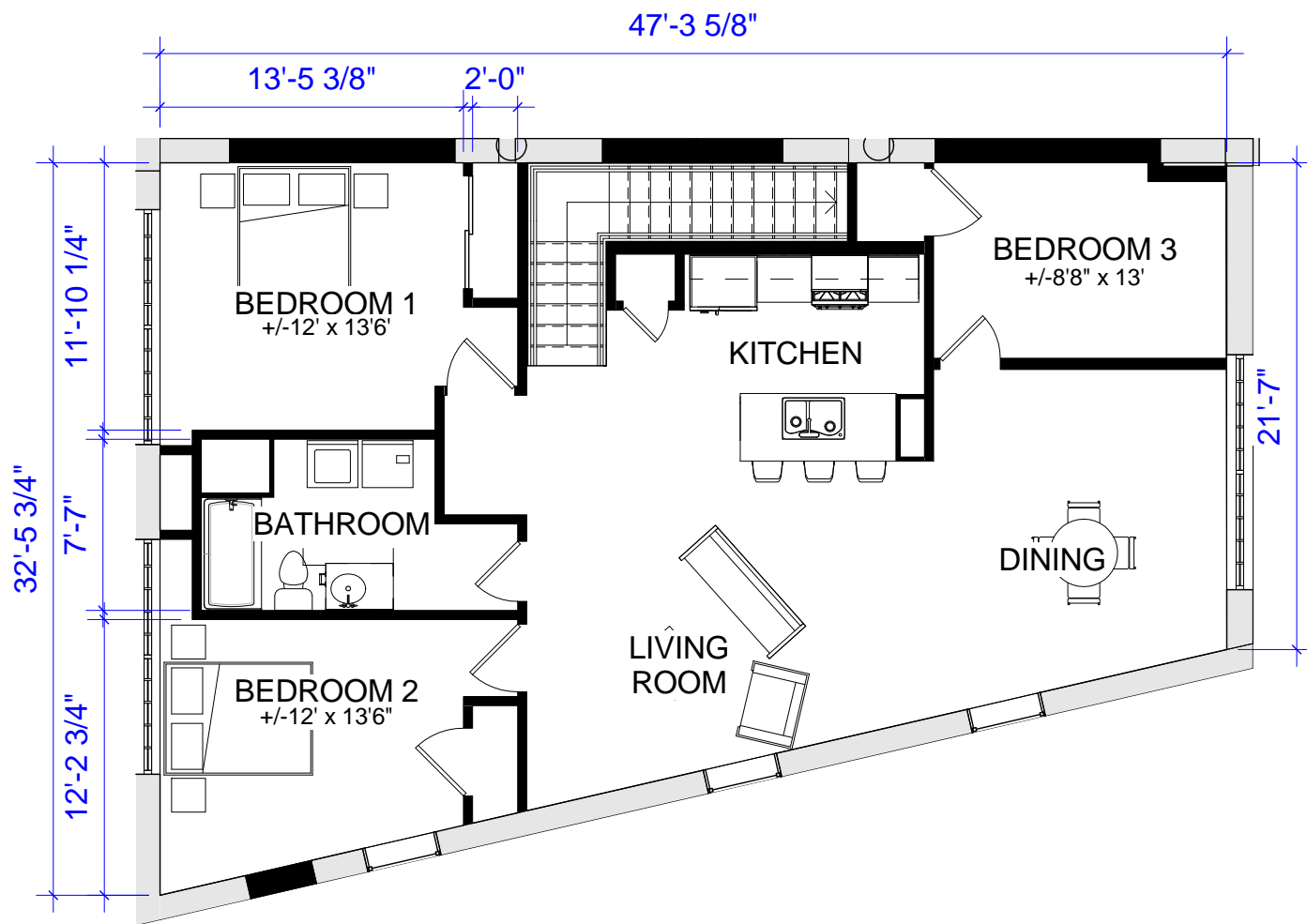
670 N. COMMERCIAL ST.  
MANCHESTER, NH 03101  
603.6226223





**FIRST FLOOR**

<p>Drawing Title:  <b>UNIQUE UNIT 109 - 1,150 SQFT</b></p>	<p>DWG No: <b>A6-5</b>          Date: 06/1/17          Scale: 1/8" = 1'-0"</p>	
<p>Project:  <b>BUTCHER BLOCK</b>          EAGLE STREET, PROVIDENCE, RI</p>	<p><b>BRADY•SULLIVAN</b>          670 N. COMMERCIAL ST.          MANCHESTER, NH 03101          603.6226223</p>	



**SECOND FLOOR**

Drawing Title:  
**UNIQUE UNIT 110 - 1,298 SQFT**

DWG No: **A6-6**  
 Date: 06/1/17  
 Scale: 1/8" = 1'-0"

Project:  
**BUTCHER BLOCK**  
 EAGLE STREET, PROVIDENCE, RI

**BRADY•SULLIVAN**  
 670 N. COMMERCIAL ST.  
 MANCHESTER, NH 03101  
 603.6226223

