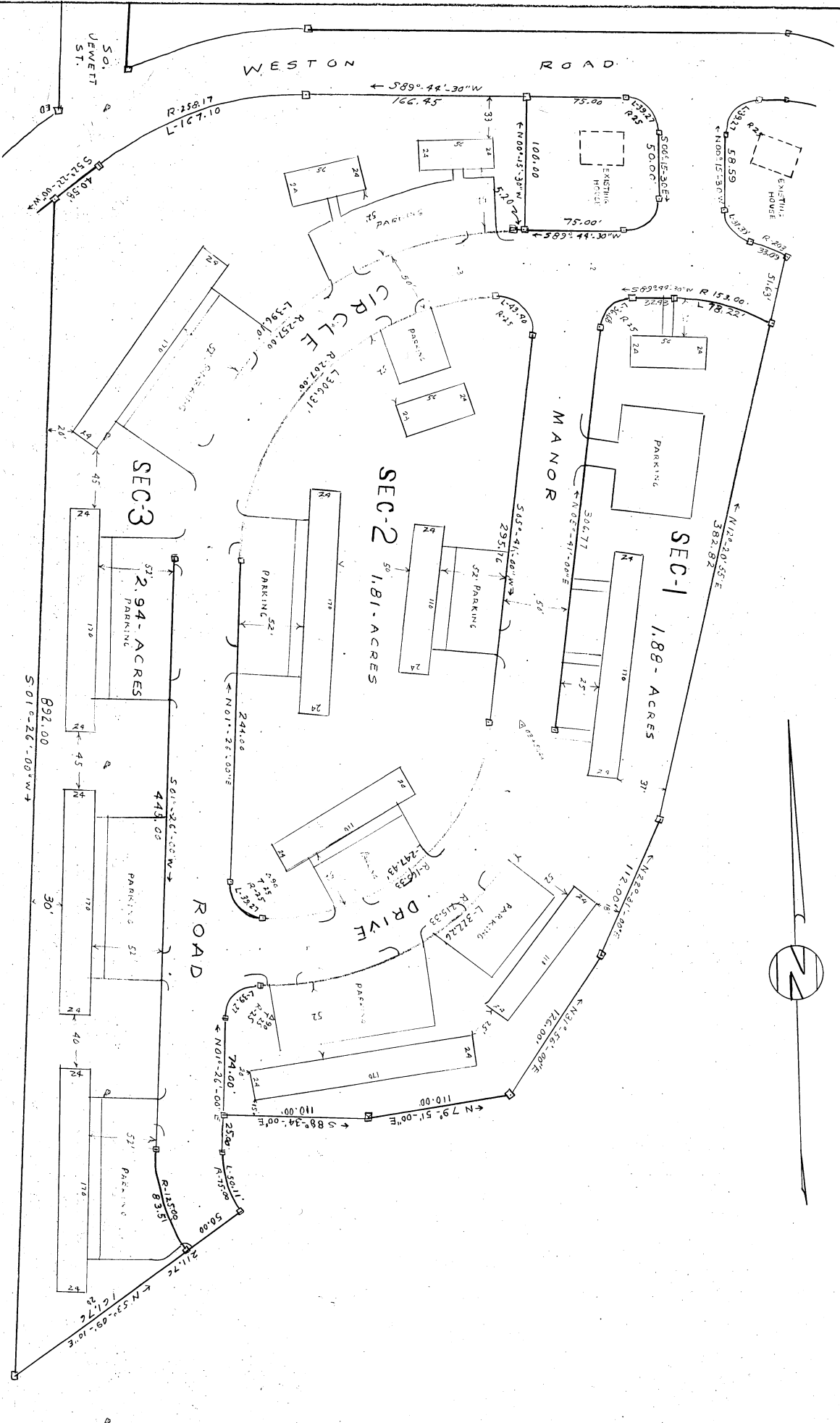
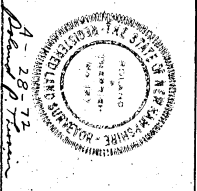


PLANNING DEPT. 11 49 AM '72
 RECEIVED
 HILLSBOROUGH COUNTY
 DEPARTMENT OF PERMITS
 JUN 30 11 46 AM '72



SOUTH SIDE MANOR
 MANCHESTER HILLSBOROUGH COUNTY
 NEW HAMPSHIRE APRIL 28, 1972 SCALE 1"=50'



PERIMETER IN 3 PARCELS 1.88; 1.81; & 2.94 ACRES
 ROYCRAFT HOMES E. JUDY

TO: Register of Deeds, Nashua, N.H.
 FROM: City Planning Board, Manchester, N.H.
 The subdivision as shown on this plan has been approved and this plan is hereby approved for recording.
 Date 6/28/72 Signed *[Signature]*

Plan # 5887 File # 2