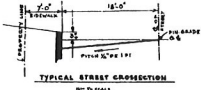
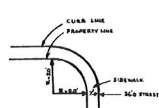


PORTION OF SUBDIVISION - PARCEL #1
 LOIS & ROSAM STREET DEVELOPMENT
 JOURNAL EDWARD J. ROY - ROYGRANT HOMES INC.
 MANCHESTER, N.H.
FINAL PLAT PLAN
 SCALE 1"=50'
 NOV. 22, 1960
 LATEST REVISION: SEPT. 1962

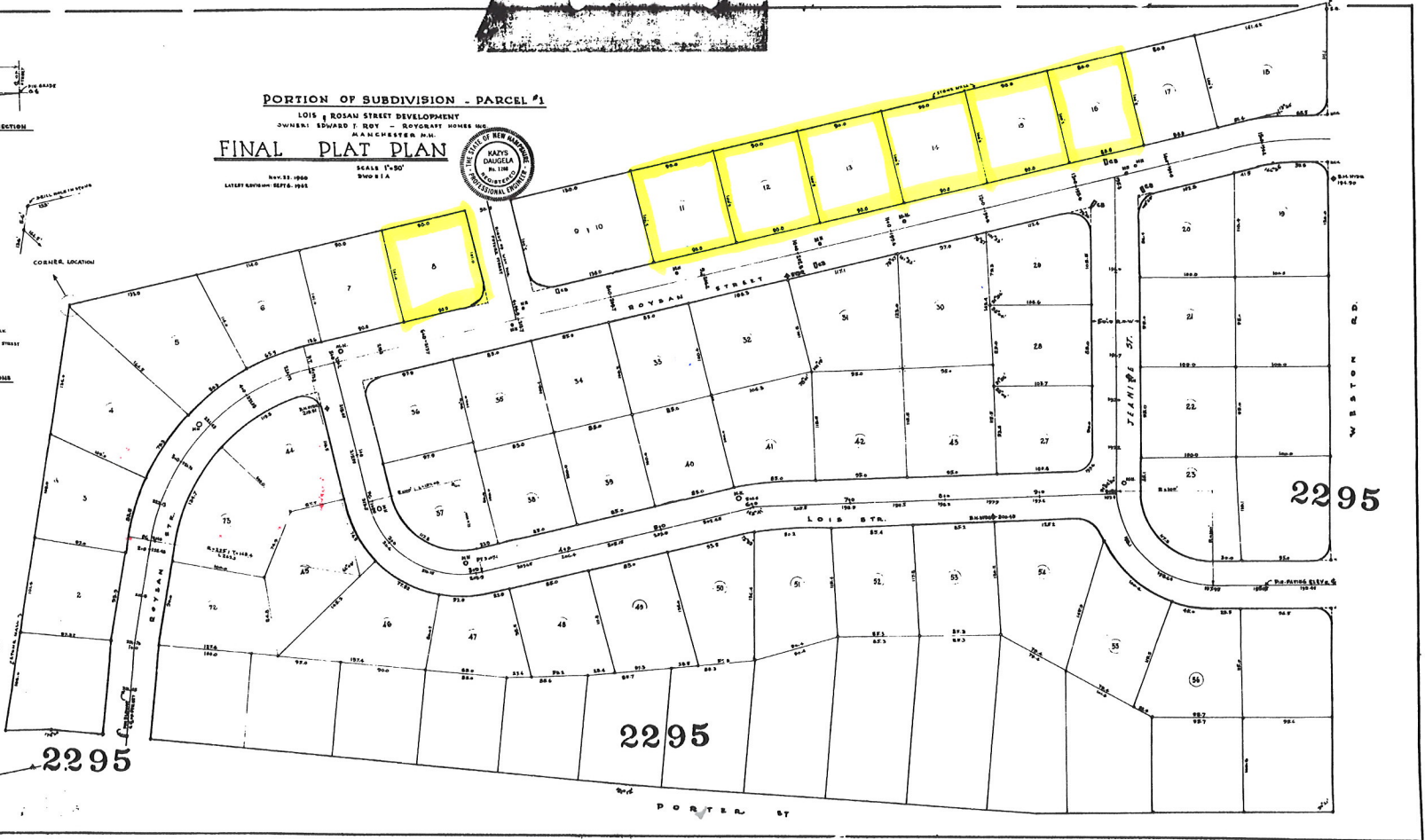


HILLSBOROUGH COUNTY
 REGISTERED DEED
 November 1, 1962
 Recorded Vol. 295



TYPICAL PROPERTY CONDITIONS AT STREET CORNERS

NOV 22 1960
 KARYS DAUGELA
 ENGINEER
 STATE OF NEW HAMPSHIRE



2295

2295