



Brady Sullivan Properties
670 N. Commercial Street
Manchester, nh 03101
603.622.6223

PROPERTY OF THE UNITED STATES GOVERNMENT
COPYING, DISSEMINATION, OR DISTRIBUTION OF
THESE DRAWINGS, PLANS, OR SPECIFICATIONS TO
UNAUTHORIZED PERSONS IS PROHIBITED
Do not remove this notice. Properly destroy documents
when no longer
needed.

© 2015 Brady Sullivan Properties

Owner
**BRADY SULLIVAN
PROPERTIES**
MANCHESTER NH

Project
WAUMBEC MILL
MANCHESTER NH

Seals

Issues	
Date	Description

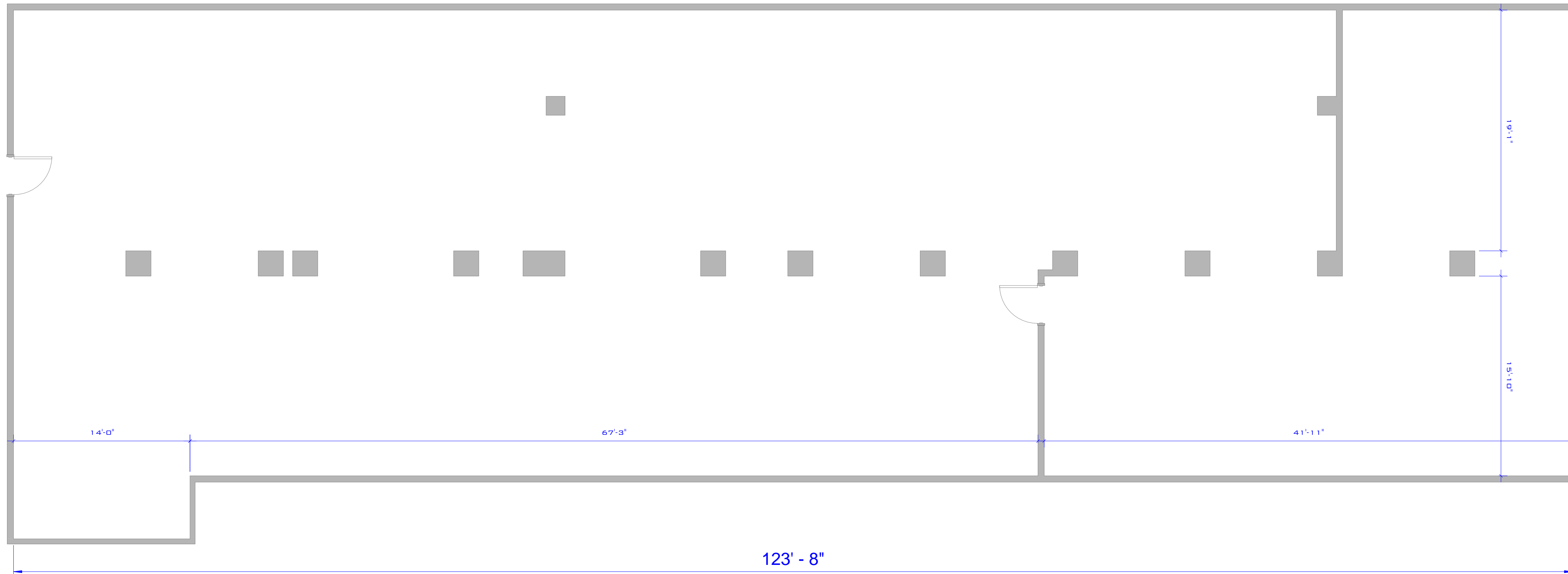
Revisions		
No.	Date	Description

Drawing Title
SUITE 902
5,170 RSF

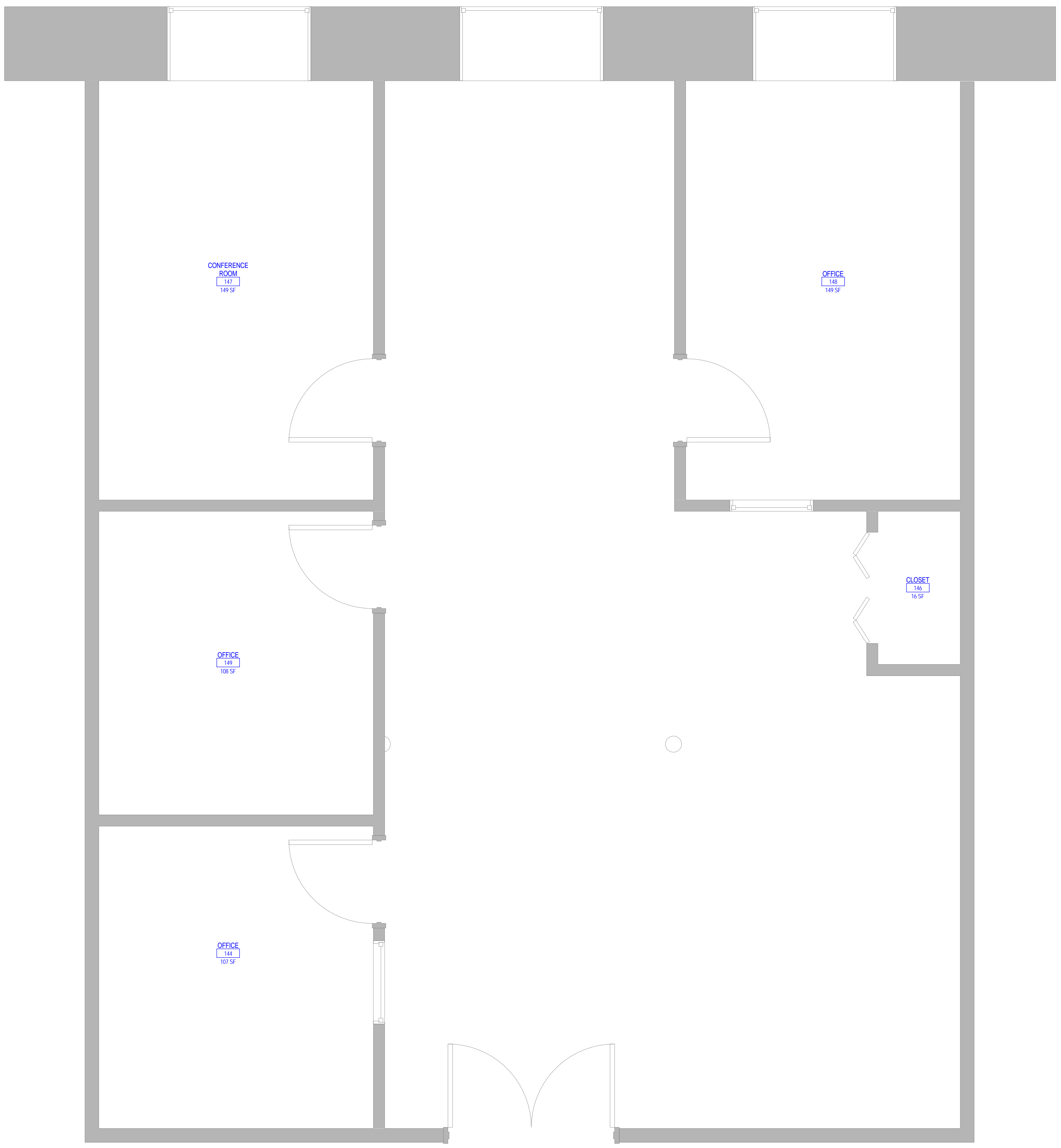
Issue Date:	
Project No:	Scale: 3/16" = 1'-0"
Project Manager:	Production Leader:
Project Architect: CL	Peer Reviewer: CL

Drawing Number
A0.4

1
3/16" = 1'-0"
SUITE 902



LEGEND			
	NOT IN SCOPE		PROPOSED ITEMS (HEAVY LINE WEIGHT)
	EXISTING ITEMS		EXISTING DOOR AND FRAME TO REMAIN
	NEW DOOR AND FRAME		DEMO ITEMS



Brady Sullivan Properties
 670 N. Commercial Street
 Manchester, nh 03101
 603.622.6223



Owner
WAUMBEC MILLS

Project
MANCHESTER NH

Seals

Issues	
Date	Description

Revisions		
No.	Date	Description

Drawing Title
SUITE 3020
1,350 RSF





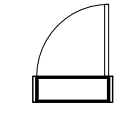
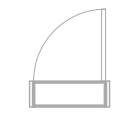
Issue Date:	5-17-2017
Project No:	Scale: As indicated
Project Manager:	Production Leader:
Project Architect: CL	Peer Reviewer: CL

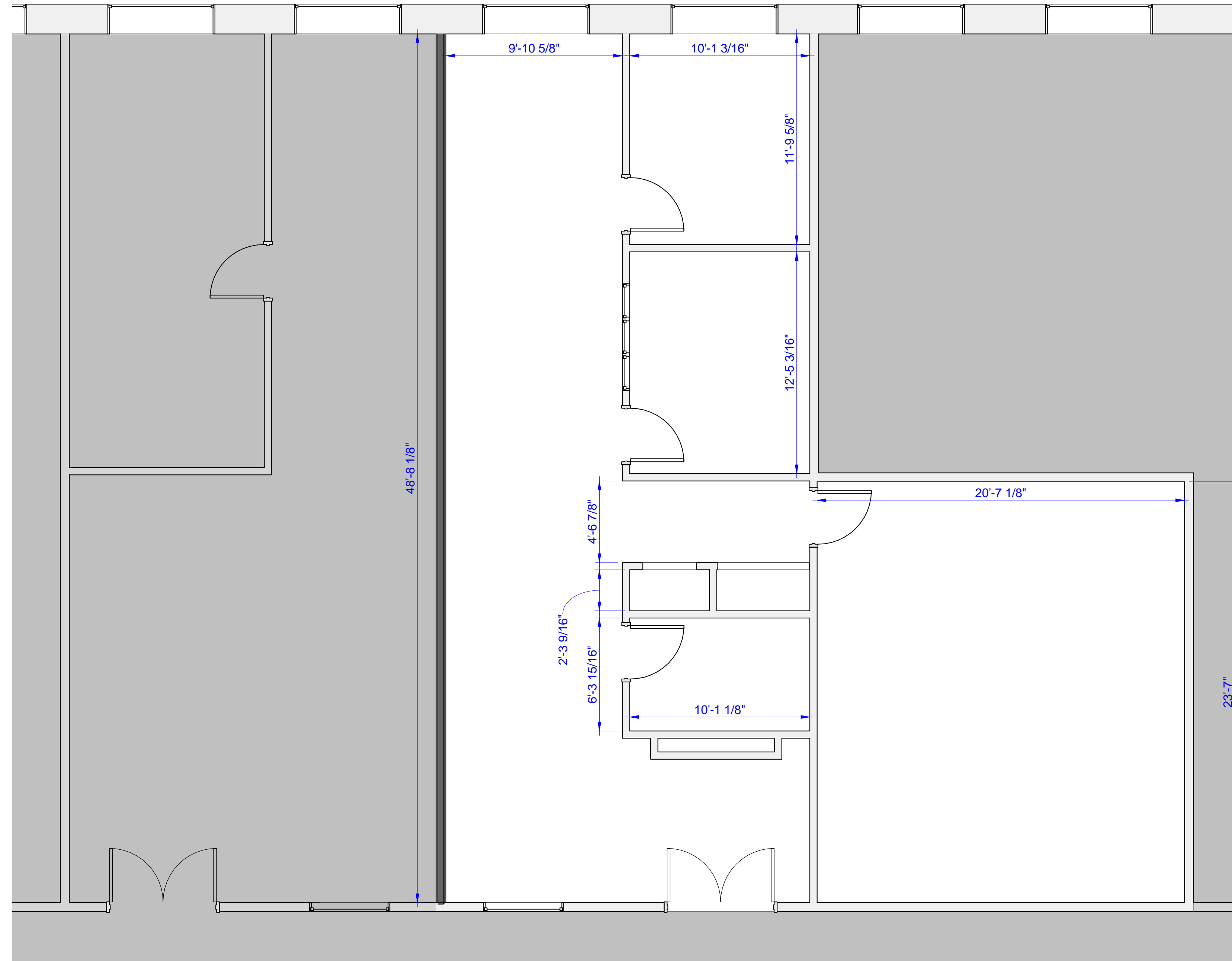
Drawing Number
A0.4

1 SUITE 3020 -
 1/2" = 1'-0"

DISCLAIMER: ALL BUILDOUT IS BASED ON BRADY SULLIVAN PROPERTIES "CONSTRUCTION STANDARDS". BRADY SULLIVAN PROPERTIES RESERVES THE RIGHT TO ISSUE A CHANGE ORDER FOR ADDITIONAL WORK NOT INCLUDED IN DRAWINGS.

5/17/2017 9:24:39 AM

LEGEND			
	NOT IN SCOPE		PROPOSED ITEMS (HEAVY LINE WEIGHT)
	EXISTING ITEMS		DEMO ITEMS
	NEW DOOR AND FRAME		EXISTING DOOR AND FRAME TO REMAIN



① SUITE 4006 - 4008
1/4" = 1'-0"



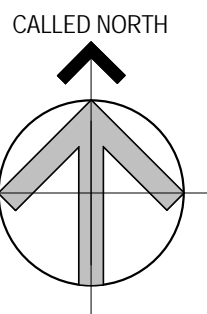
Brady Sullivan Properties
670 N. Commercial Street
Manchester, nh 03101
603.622.6223



Owner
**BRADY SULLIVAN
PROPERTIES**

Project
WAUMBEC MILL

250 Commercial St, Manchester, NH
03101



Seals
0%

Issues	
Date	Description

Revisions		
No.	Date	Description

Drawing Title
SUITE 4006

1,547 USF

Issue Date: 3-24-2017

Project No: Project Number Scale: As indicated

Project Manager: Production Leader:

Project Architect: Peer Reviewer:

Drawing Number

S1.01

DISCLAIMER: ALL BUILDOUT IS BASED ON BRADY SULLIVAN PROPERTIES "CONSTRUCTION STANDARDS". BRADY SULLIVAN PROPERTIES RESERVES THE RIGHT TO ISSUE A CHANGE ORDER FOR ADDITIONAL WORK NOT INCLUDED IN DRAWINGS.



Brady Sullivan Properties
 670 N. Commercial Street
 Manchester, nh 03101
 603.622.6223



Owner
**BRADY SULLIVAN
 PROPERTIES**

Project
WAUMBEC MILL
 250 Commercial St. Manchester, NH
 03101

Seals
 0%

Issues	
Date	Description

Revisions		
No.	Date	Description

Drawing Title
SUITE 4019
884 RSF

Issue Date: 6-1-2017

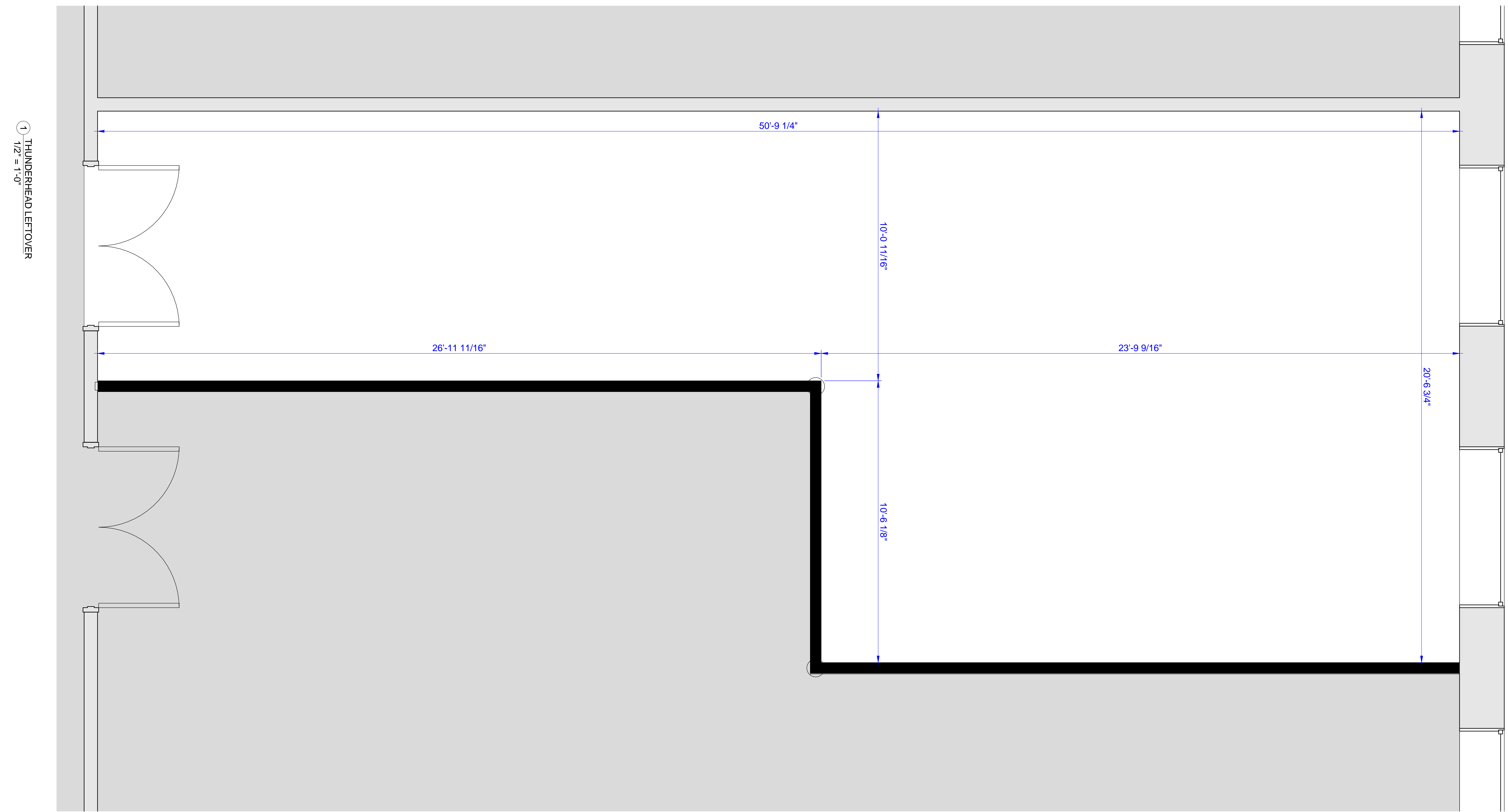
Project No: Project Number Scale: As indicated

Project Manager: Production Leader:

Project Architect: Peer Reviewer:

Drawing Number
E1.15

LEGEND			
	NOT IN SCOPE		PROPOSED ITEMS (HEAVY LINE WEIGHT)
	EXISTING ITEMS		DEMO ITEMS
	NEW DOOR AND FRAME		EXISTING DOOR AND FRAME TO REMAIN



DISCLAIMER: ALL BUILDOUT IS BASED ON BRADY SULLIVAN PROPERTIES "CONSTRUCTION STANDARDS". BRADY SULLIVAN PROPERTIES RESERVES THE RIGHT TO ISSUE A CHANGE ORDER FOR ADDITIONAL WORK NOT INCLUDED IN DRAWINGS.

6/1/2017 2:29:25 PM