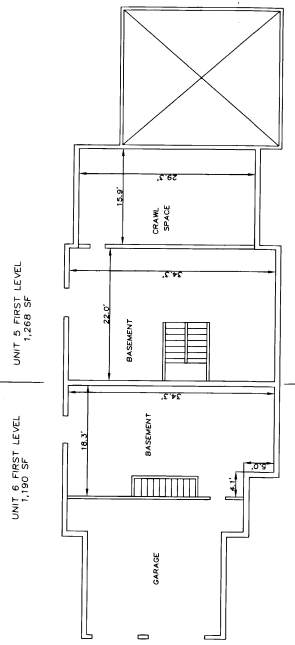
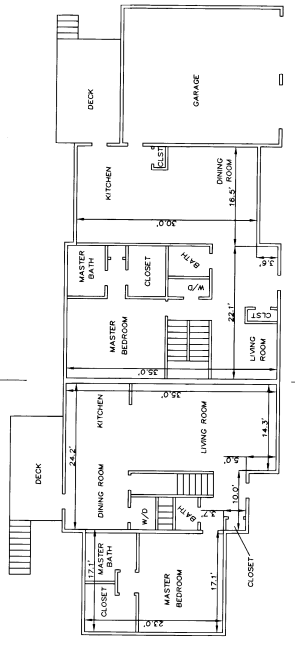
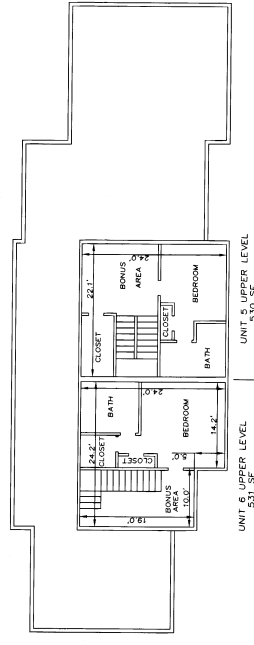
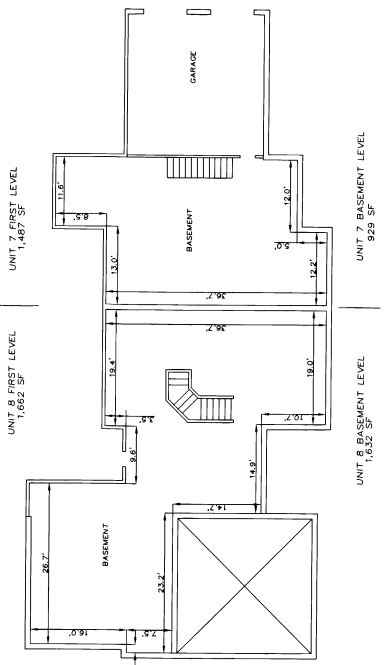
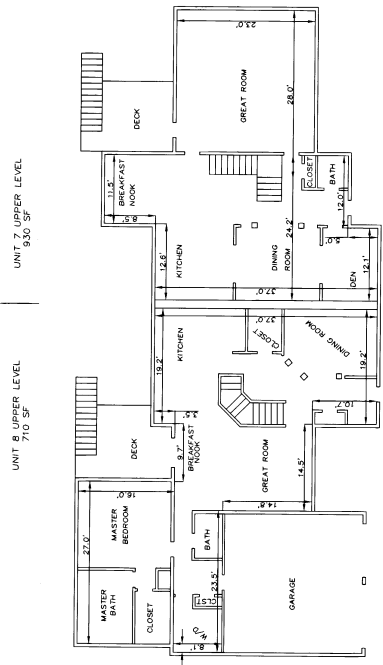
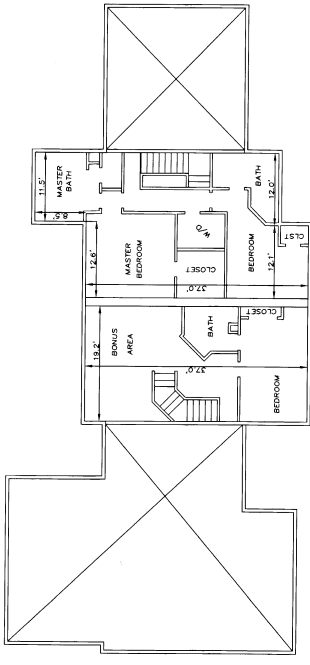


2011 JAN 28 AM 9:44



I, JON POWELL, A PROFESSIONAL ENGINEER, HEREBY CERTIFY THAT THE UNITS DEPICTED HEREON ARE THE UNITS AS SHOWN ON THE ACTUAL FIELD EXAMINATION AND THAT THESE FLOOR PLANS ARE IN ACCORDANCE WITH THE MASSACHUSETTS CONDOMINIUM ACT. I FURTHER CERTIFY THAT THE UNITS AND APPURTENANT LIMITED COMMON AREAS DEPICTED HEREON ARE SUBSTANTIALLY COMPLETE.

DATE: 1-17-11
SIGNATURE: [Signature]

A COPY OF THIS PLAN HAS BEEN FILED WITH THE TOWN OF CHESTER, NH.
DATE: 1-17-11



Rokeh Consulting, LLC
89 KING ROAD, CHICHESTER, NH 03258
PH: 603-387-8688 FAX: 603-513-6242

SCALE: 1" = 10'
DR. BY: JR CK. BY: JR
JOB NO. 2010.0059
SHEET NO. 1 OF 1

REVISIONS

DATE	DESCRIPTION	OWN BY	CK BY

CONDOMINIUM FLOOR PLAN - UNITS 5/6 AND UNITS 7/8
SOUTH WOODS CONDOMINIUM DEVELOPMENT
TOWN OF CHESTER, ROCKINGHAM COUNTY, NEW HAMPSHIRE
DATE: 1-6-11

DECLARANT:
BRADY SULLIVAN SOUTH WOODS, LLC
670 N. COMMERCIAL STREET, SUITE 303
MANCHESTER, NH 03101

D-36691
Sheet 3 of 3