



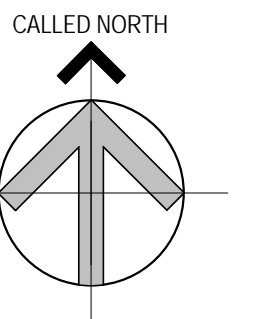
Brady Sullivan Properties
670 N. Commercial Street
Manchester, nh 03101
603.622.6223

PROPERTY OF THE UNITED STATES GOVERNMENT
COPYING, DISSEMINATION, OR DISTRIBUTION OF
THESE DRAWINGS, PLANS, OR SPECIFICATIONS TO
UNAUTHORIZED PERSONS IS PROHIBITED
Do not remove this notice. Properly destroy documents
when no longer
needed.

© 2015 Brady Sullivan Properties

Owner
**BRADY SULLIVAN
PROPERTIES**

Project
**MILLWEST -
COMMERCIAL**
MCGREGOR STREET



Seals
0%

Issues	
Date	Description

Revisions		
No.	Date	Description

Drawing Title
SUITE 11

Issue Date: Issue Date

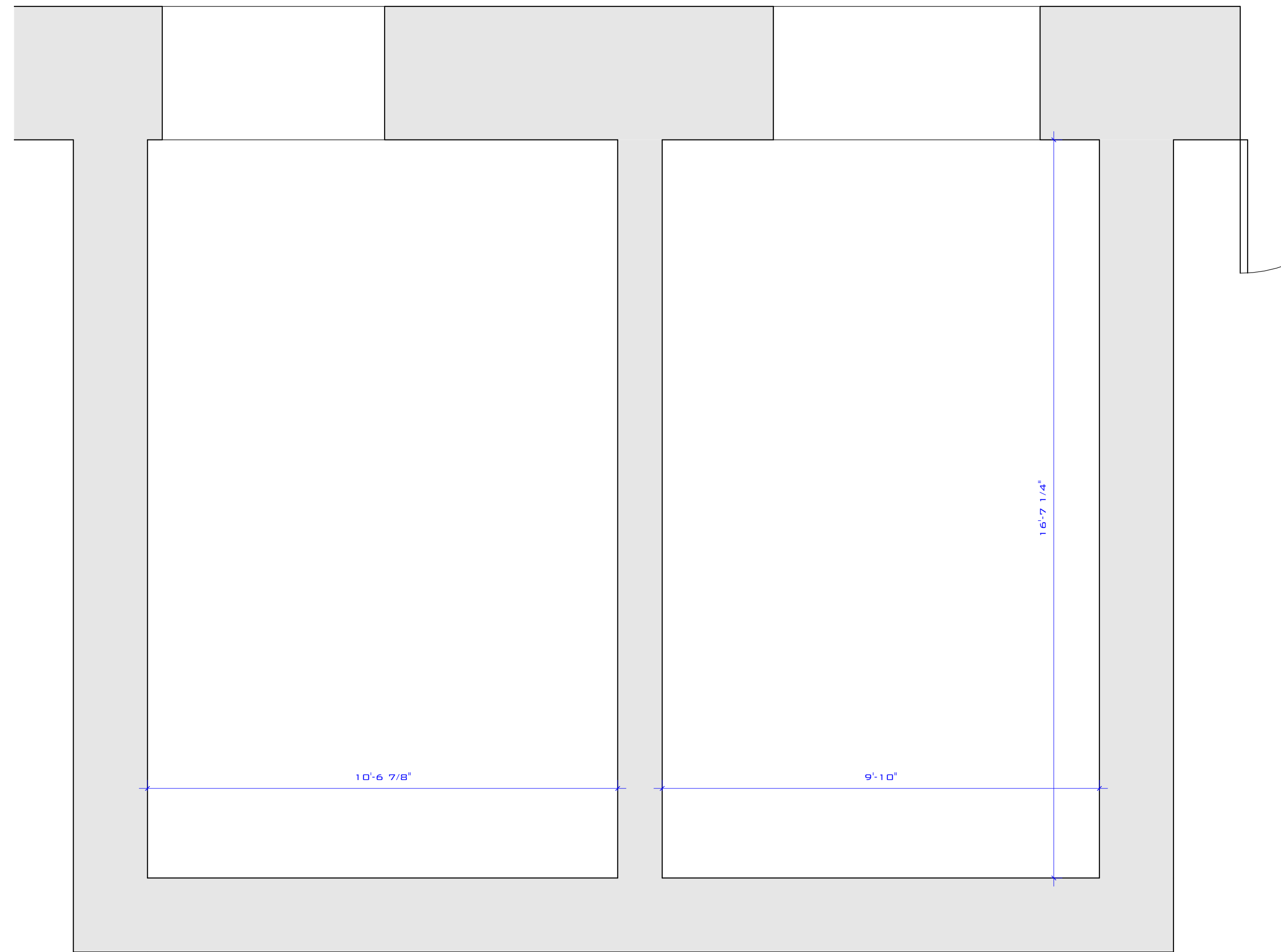
Project No: Project Number Scale: 1/2" = 1'-0"

Project Manager: Production Leader:

Project Architect: Peer Reviewer:

Drawing Number

A1-08



1 SUITE 11
1/2" = 1'-0"



5/17/2016 9:31:02 AM



Brady Sullivan Properties
670 N. Commercial Street
Manchester, nh 03101
603.622.6223

PROPERTY OF THE UNITED STATES GOVERNMENT
COPYING, DISSEMINATION, OR DISTRIBUTION OF
THESE DRAWINGS, PLANS, OR SPECIFICATIONS TO
UNAUTHORIZED PERSONS IS PROHIBITED
Do not remove this notice. Properly destroy documents
when no longer
needed.

© 2015 Brady Sullivan Properties

Owner

**BRADY SULLIVAN
PROPERTIES**

Project

**MILLWEST -
COMMERCIAL**
MCGREGOR STREET

Seals

0%

Issues

Date	Description

Revisions

No.	Date	Description

Drawing Title

SUITE 21

1,187 RSF

Issue Date: Issue Date

Project No: Project Number Scale: 1/2" = 1'-0"

Project Manager: Production Leader:

Project Architect: Peer Reviewer:

Drawing Number

A1-07

5/17/2016 9:29:00 AM

1 SUITE 21
1/2" = 1'-0"



Brady Sullivan Properties
670 N. Commercial Street
Manchester, nh 03101
603.622.6223

PROPERTY OF THE UNITED STATES GOVERNMENT
COPYING, DISSEMINATION, OR DISTRIBUTION OF
THESE DRAWINGS, PLANS, OR SPECIFICATIONS TO
UNAUTHORIZED PERSONS IS PROHIBITED
Do not remove this notice. Properly destroy documents
when no longer
needed.

© 2015 Brady Sullivan Properties

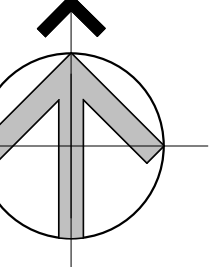
Owner

**BRADY SULLIVAN
PROPERTIES**

Project

**MILLWEST -
COMMERCIAL**
MCGREGOR STREET

↑
CALLED NORTH



Seals

0%

Issues

Date	Description

Revisions

No.	Date	Description

Drawing Title

SUITE 23

3,800 RSF

Issue Date:

Issue Date

Project No: Project Number Scale: As indicated

Project Manager: Production Leader:

Project Architect: Peer Reviewer:

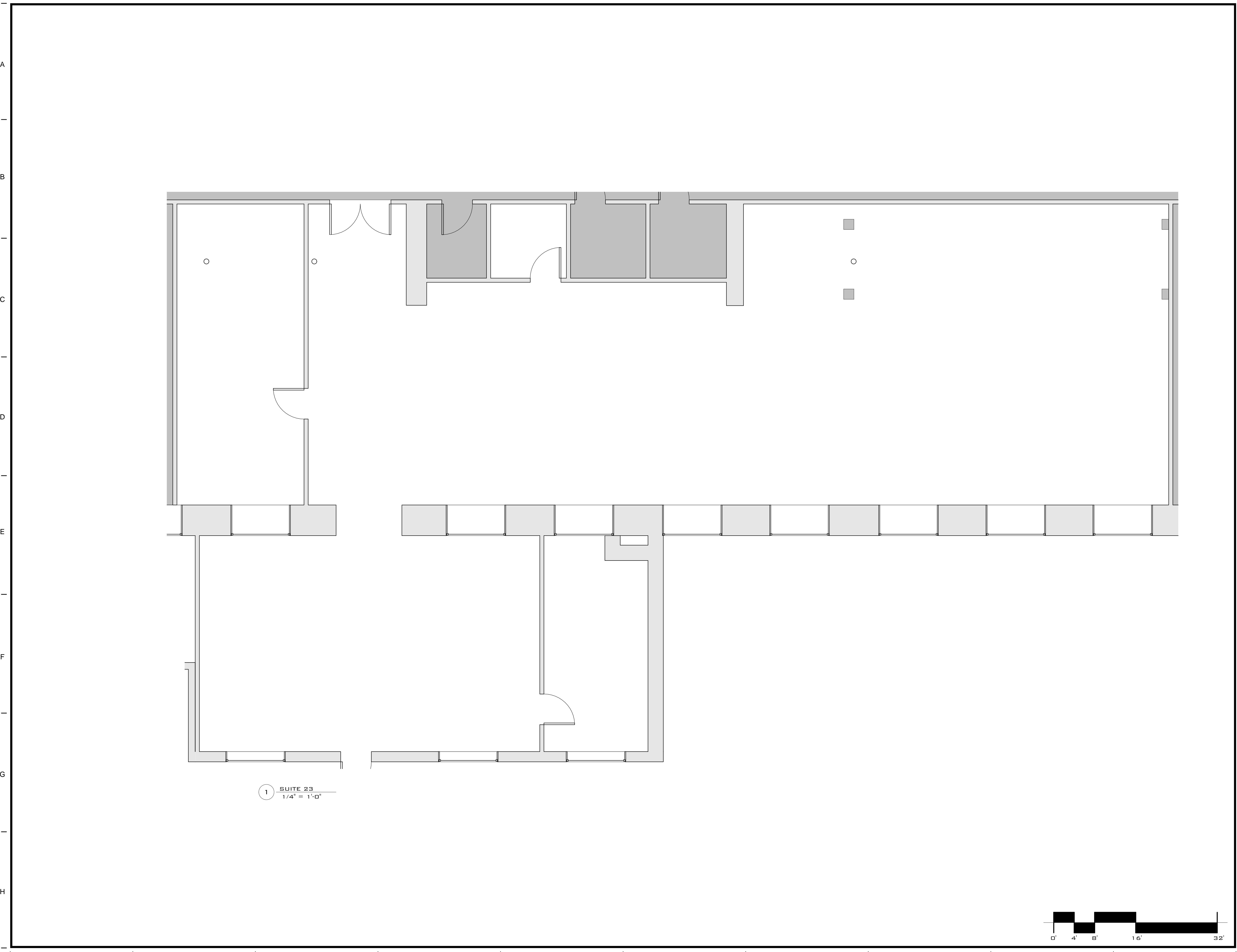
Drawing Number

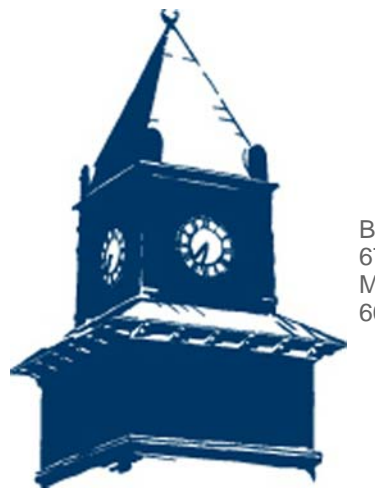
A1-01

5/17/2016 9:25:13 AM



1 SUITE 23
1/4" = 1'-0"





Brady Sullivan Properties
670 N. Commercial Street
Manchester, nh 03101
603.622.6223

PROPERTY OF THE UNITED STATES GOVERNMENT
COPYING, DISSEMINATION, OR DISTRIBUTION OF
THESE DRAWINGS, PLANS, OR SPECIFICATIONS TO
UNAUTHORIZED PERSONS IS PROHIBITED
Do not remove this notice. Properly destroy documents
when no longer
needed.

© 2015 Brady Sullivan Properties

Owner
**BRADY SULLIVAN
PROPERTIES**

Project
**MILLWEST -
COMMERCIAL**
MCGREGOR STREET

Seals
0%

Issues	
Date	Description

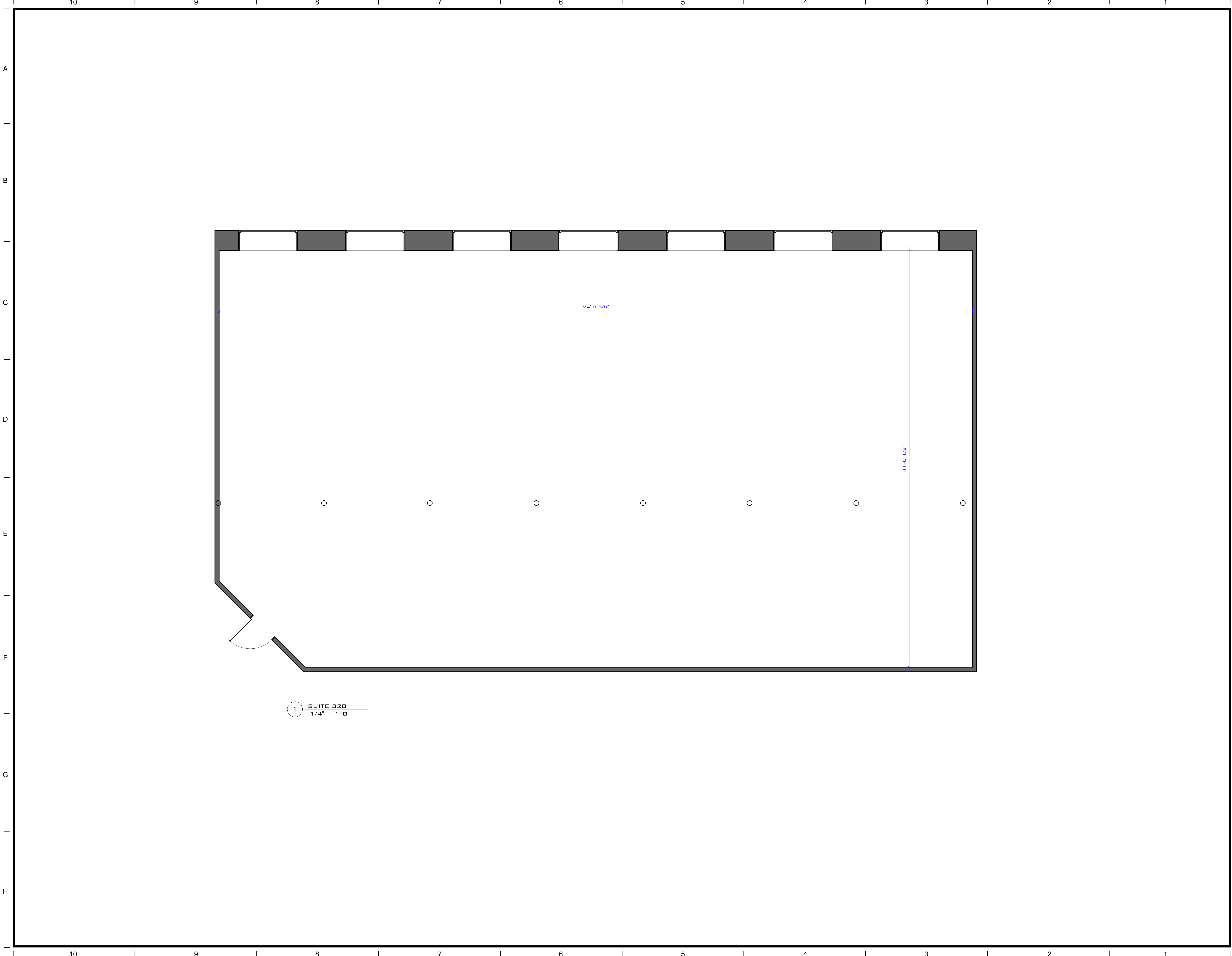
Revisions		
No.	Date	Description

Drawing Title
SUITE 320
3,095 RSF

Issue Date:		Issue Date	
Project No:	Project Number	Scale:	1/4" = 1'-0"
Project Manager:		Production Leader:	
Project Architect:		Peer Reviewer:	

Drawing Number
A1-08

5/17/2016 9:51:03 AM



1 SUITE 320
1/4" = 1'-0"



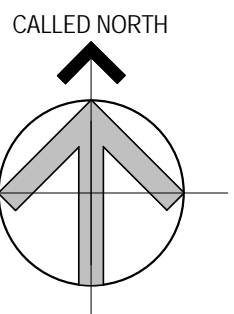
Brady Sullivan Properties
670 N. Commercial Street
Manchester, nh 03101
603.622.6223

PROPERTY OF THE UNITED STATES GOVERNMENT
COPYING, DISSEMINATION, OR DISTRIBUTION OF
THESE DRAWINGS, PLANS, OR SPECIFICATIONS TO
UNAUTHORIZED PERSONS IS PROHIBITED
Do not remove this notice. Properly destroy documents
when no longer
needed.

© 2015 Brady Sullivan Properties

Owner
**BRADY SULLIVAN
PROPERTIES**

Project
**MILLWEST -
COMMERCIAL**
MCGREGOR STREET



Seals
0%

Issues	
Date	Description

Revisions		
No.	Date	Description

Drawing Title
SUITE 322
4,609 RSF

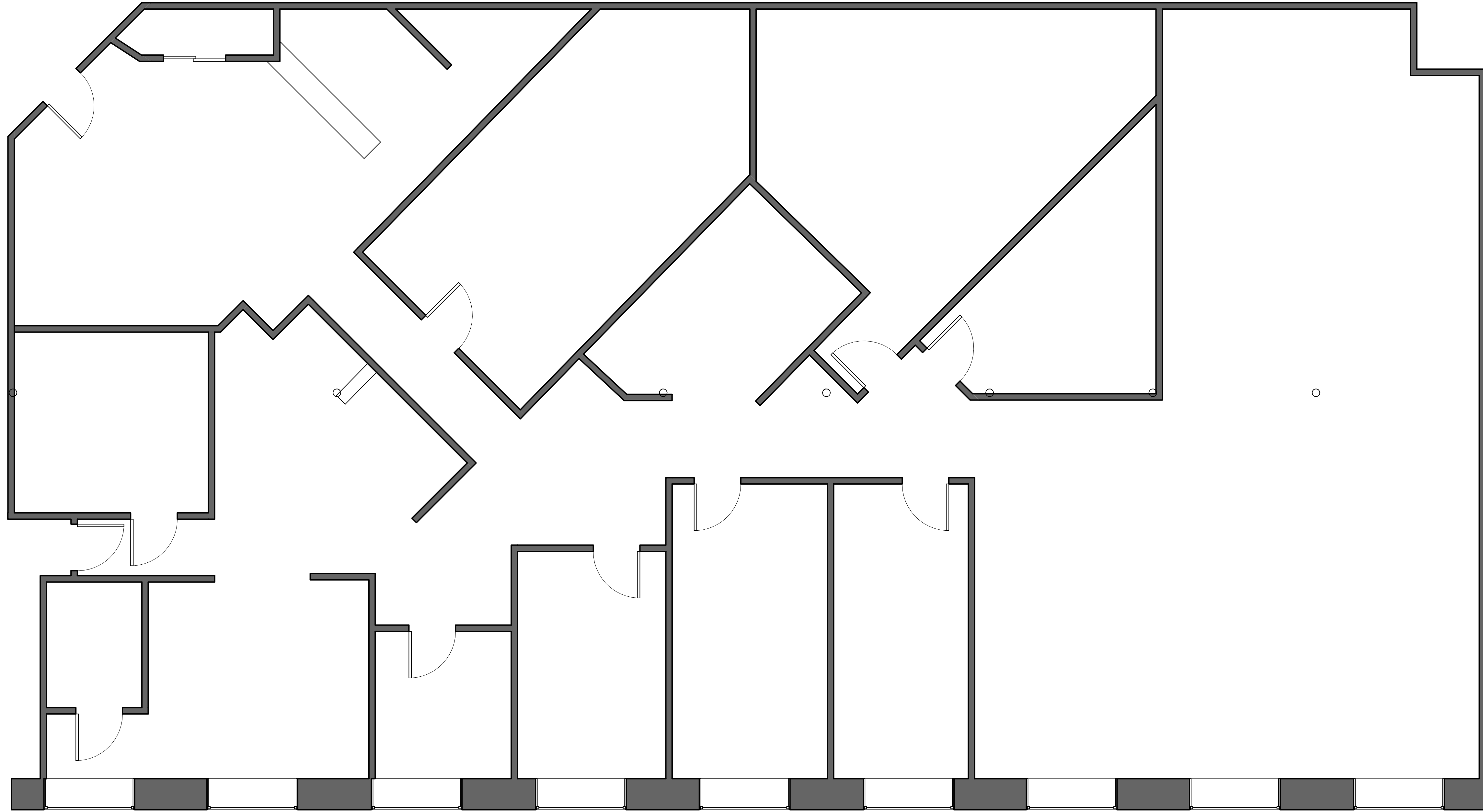
Issue Date: Issue Date

Project No: Project Number Scale: 1/4" = 1'-0"

Project Manager: Production Leader:

Project Architect: Peer Reviewer:

Drawing Number
A1-06



1 SUITE 322
1/4" = 1'-0"



5/16/2016 12:15:29 PM



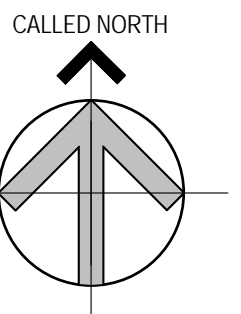
Brady Sullivan Properties
670 N. Commercial Street
Manchester, nh 03101
603.622.6223

Notice:
This drawing is the property of Brady Sullivan Properties. The use, re-use or reproduction of this drawing for any purpose whatsoever without an expressed written agreement between BSP and the user is prohibited.
Rights to use the information on this sheet are not transferred until payment has been received for services rendered. Any rights so granted are non-transferable to other parties without the prior expressed written consent of BSP.

© 2015 Brady Sullivan Properties

Owner
**BRADY SULLIVAN
PROPERTIES**
MANCHESTER NH

Project
**MILLWEST -
COMMERCIAL**



Seals
PROGRESS PRINT

Issues	
Date	Description

Revisions		
No.	Date	Description

Drawing Title
UNIT 327
1,043 RSF

Issue Date:	
Project No:	Scale: 1/2" = 1'-0"
Project Manager:	Production Leader:
Project Architect:	Peer Reviewer:

Drawing Number
A.106

1
1/2" = 1'-0"
UNIT 327 - EXISTING

49' - 1 5/16"

20' - 10 1/4"



Brady Sullivan Properties
670 N. Commercial Street
Manchester, nh 03101
603.622.6223

PROPERTY OF THE UNITED STATES GOVERNMENT
COPYING, DISSEMINATION, OR DISTRIBUTION OF
THESE DRAWINGS, PLANS, OR SPECIFICATIONS TO
UNAUTHORIZED PERSONS IS PROHIBITED
Do not remove this notice. Properly destroy documents
when no longer
needed.

© 2015 Brady Sullivan Properties

Owner

**BRADY SULLIVAN
PROPERTIES**

Project

**MILLWEST -
COMMERCIAL**
MCGREGOR STREET

Seals

0%

Issues

Date	Description

Revisions

No.	Date	Description

Drawing Title

SUITE 421

5,658 RSF

Issue Date:

Issue Date

Project No: Project Number Scale: 1/4" = 1'-0"

Project Manager: Production Leader:

Project Architect: Peer Reviewer:

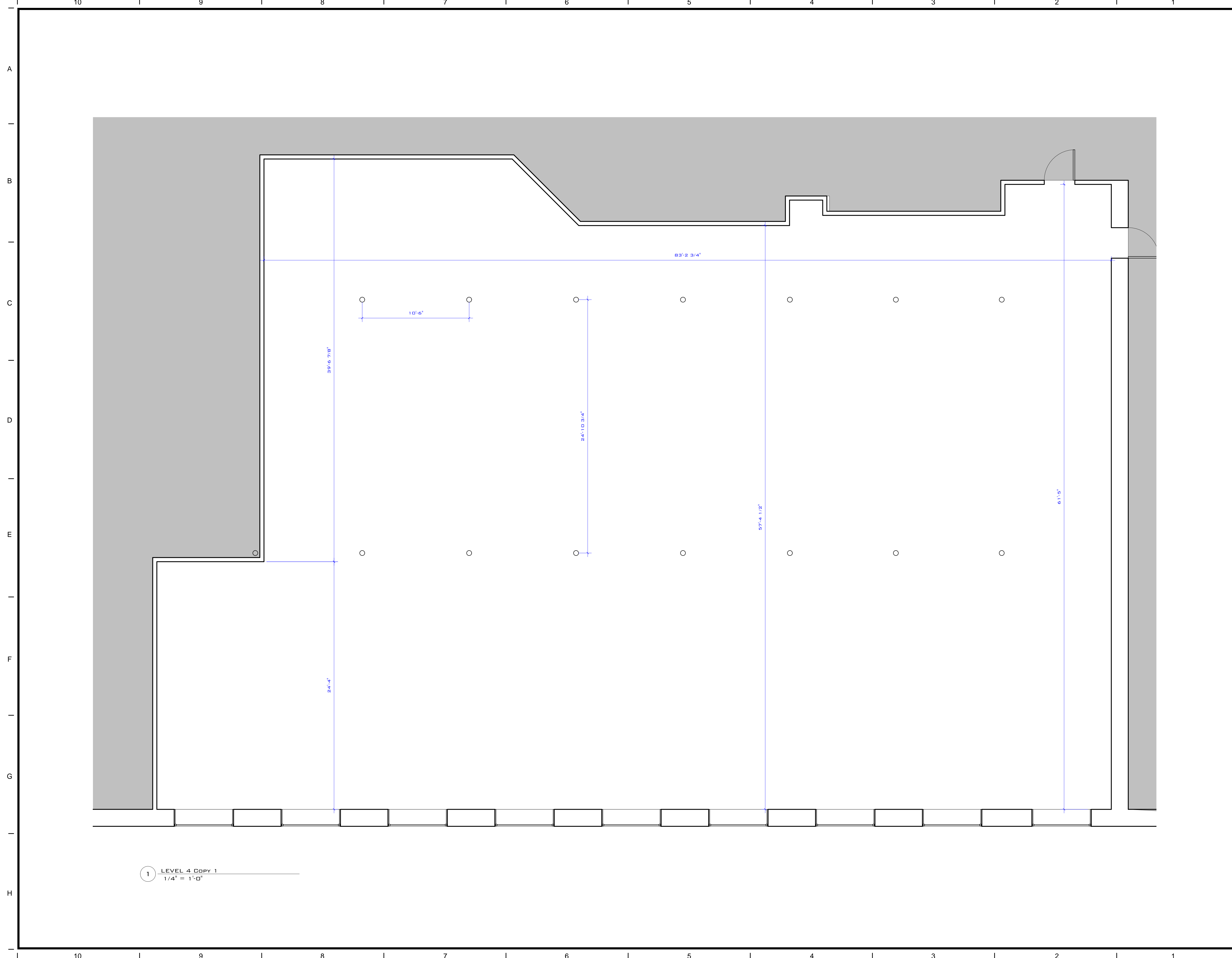
Drawing Number

A1-07

5/17/2016 9:47:03 AM

1

LEVEL 4 COPY 1
1/4" = 1'-0"





Brady Sullivan Properties
670 N. Commercial Street
Manchester, nh 03101
603.622.6223

PROPERTY OF THE UNITED STATES GOVERNMENT
COPYING, DISSEMINATION, OR DISTRIBUTION OF
THESE DRAWINGS, PLANS, OR SPECIFICATIONS TO
UNAUTHORIZED PERSONS IS PROHIBITED
Do not remove this notice. Properly destroy documents
when no longer
needed.

© 2015 Brady Sullivan Properties

Owner

**BRADY SULLIVAN
PROPERTIES**

MANCHESTER NH

Project

**195 MCGREGOR
STREET**

MANCHESTER NH

Seals

Issues

Date	Description

Revisions

No.	Date	Description

Drawing Title

SUITE A-210

4,226 RSF

Issue Date:

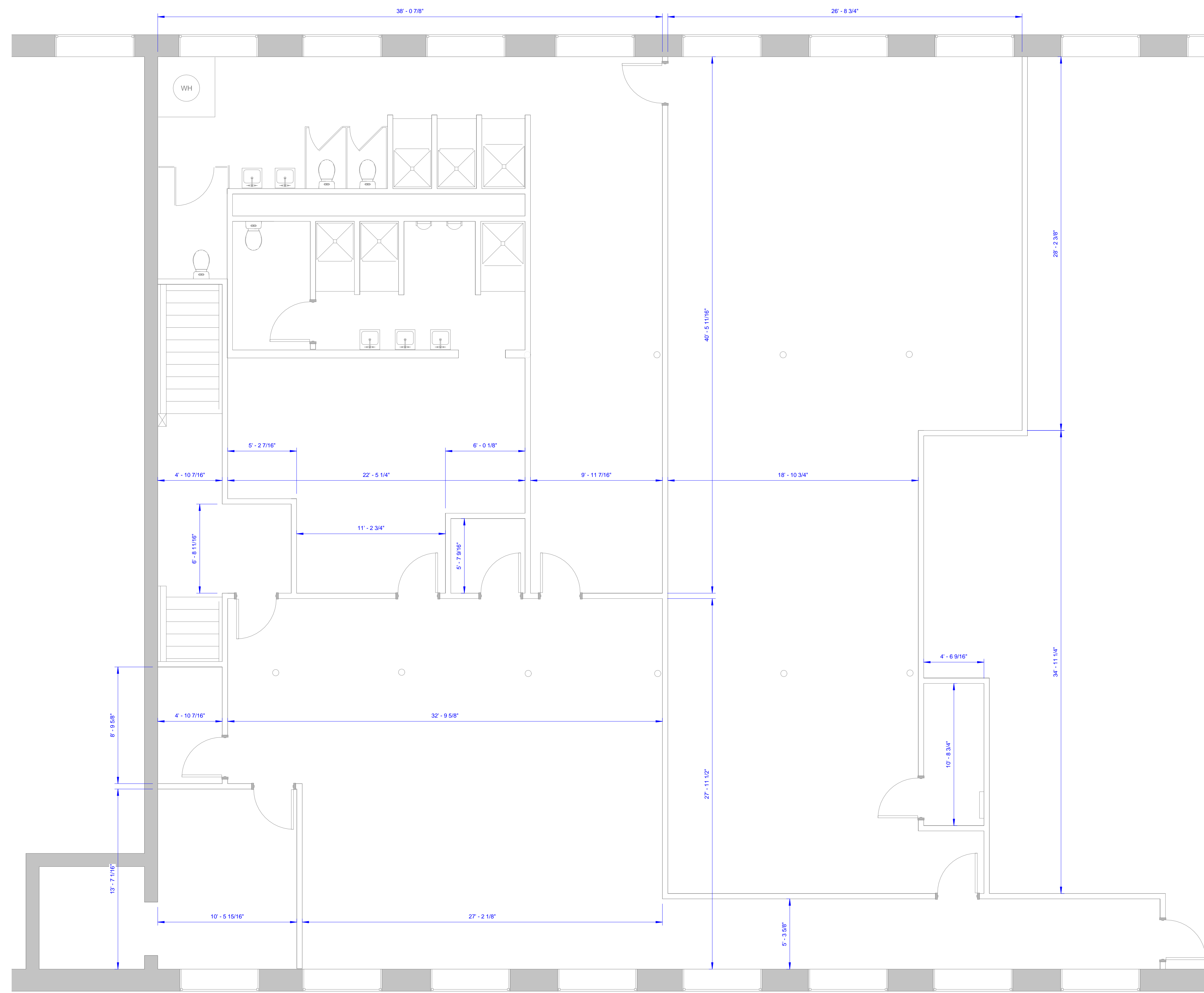
Project No: Scale: 1/4" = 1'-0"

Project Manager: Production Leader:

Project Architect: CL Peer Reviewer: CL

Drawing Number

A0.5



1 SUITE A-210
1/4" = 1'-0"

DISCLAIMER: REFER TO TSA FIELD OFFICE PROGRAM OF REQUIREMENTS AND THE PROGRAM OF REQUIREMENTS FOR PHYSICAL SECURITY EQUIPMENT SPECIFICATIONS FOR ALL CONSTRUCTION SPECS

5/20/2016 11:08:40 AM