



Brady Sullivan Properties  
 670 N. Commercial Street  
 Manchester, nh 03101  
 603.622.6223



Owner  
**BRADY SULLIVAN  
 PROPERTIES**  
 MANCHESTER NH

Project  
**900 ELM STREET**  
 MANCHESTER NH

Seals  
 PROGRESS PRINT

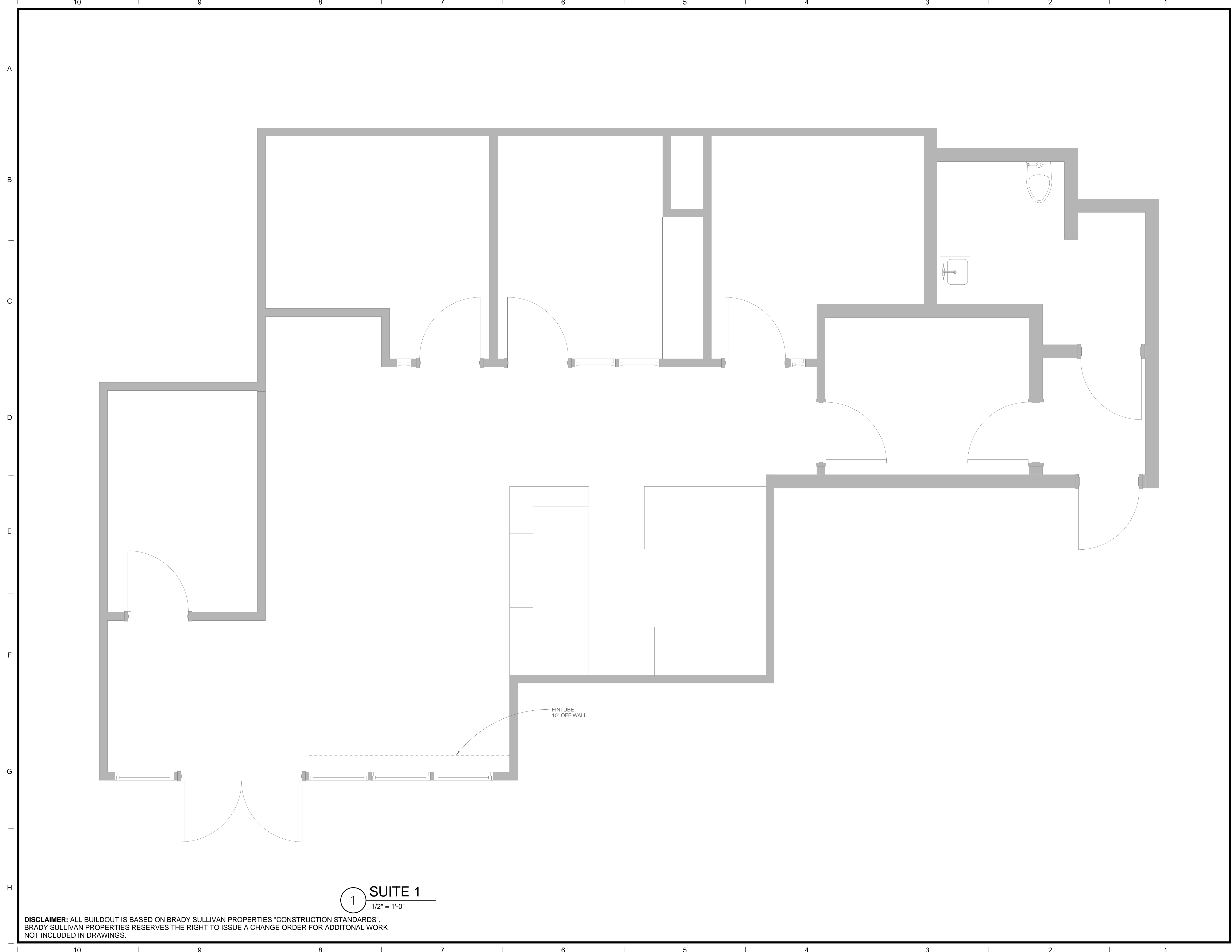
Issues	
Date	Description

Revisions		
No.	Date	Description

Drawing Title  
**SUITE 101**  
**1,245 RSF**

Issue Date:	4-24-2017
Project No:	Scale: 1/2" = 1'-0"
Project Manager:	Production Leader:
Project Architect:	Peer Reviewer:

Drawing Number  
**A.106**



**1 SUITE 1**  
 1/2" = 1'-0"

**DISCLAIMER:** ALL BUILDOUT IS BASED ON BRADY SULLIVAN PROPERTIES "CONSTRUCTION STANDARDS".  
 BRADY SULLIVAN PROPERTIES RESERVES THE RIGHT TO ISSUE A CHANGE ORDER FOR ADDITIONAL WORK  
 NOT INCLUDED IN DRAWINGS.

4/24/2017 11:31:20 AM



Brady Sullivan Properties  
670 N. Commercial Street  
Manchester, nh 03101  
603.622.6223

Notice:  
This drawing is the property of Brady Sullivan Properties. The use, re-use or reproduction of this drawing for any purpose whatsoever without an expressed written agreement between BSP and the user is prohibited.  
Rights to use the information on this sheet are not transferred until payment has been received for services rendered. Any rights so granted are non-transferable to other parties without the prior expressed written consent of BSP.

© 2015 Brady Sullivan Properties

Owner  
**BRADY SULLIVAN  
PROPERTIES**  
MANCHESTER  
NH

Project  
**900 ELM STREET**  
MANCHESTER NH

Seals  
**PROGRESS PRINT**

Issues	
Date	Description

Revisions		
No.	Date	Description

Drawing Title  
**SUITE 500**  
**14,266 RSF**

Issue Date:	
Project No:	Scale: 1/8" = 1'-0"
Project Manager:	Production Leader:
Project Architect:	Peer Reviewer:

Drawing Number  
**A.106**



**1 SUITE 500**  
1/8" = 1'-0"

**DISCLAIMER:** ALL BUILDOUT IS BASED ON BRADY SULLIVAN PROPERTIES "CONSTRUCTION STANDARDS".  
BRADY SULLIVAN PROPERTIES RESERVES THE RIGHT TO ISSUE A CHANGE ORDER FOR WORK NOT INCLUDED IN DRAWINGS.  
**2,487 USF**

5/18/2016 9:15:30 AM



Brady Sullivan Properties  
670 N. Commercial Street  
Manchester, nh 03101  
603.622.6223



Owner  
**BRADY SULLIVAN  
PROPERTIES**  
MANCHESTER  
NH

Project  
**900 ELM STREET**  
MANCHESTER NH

Seals  
PROGRESS PRINT

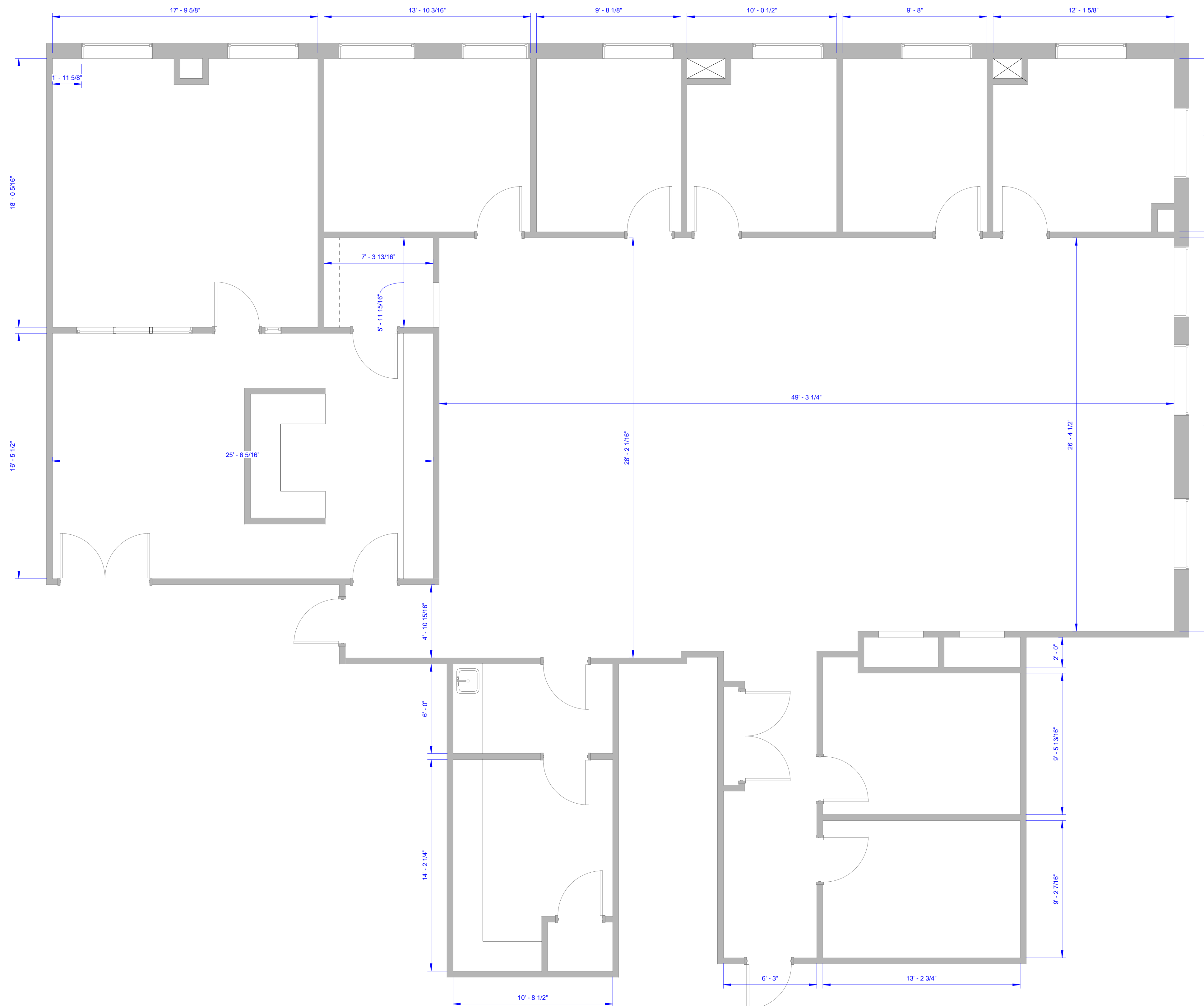
Issues	
Date	Description

Revisions		
No.	Date	Description

Drawing Title  
**SUITE 603**  
**4,538 RSF**

Issue Date:	
Project No:	Scale: 1/4" = 1'-0"
Project Manager:	Production Leader:
Project Architect:	Peer Reviewer:

Drawing Number  
**A.106**



**1 SUITE 603**  
1/4" = 1'-0"

**DISCLAIMER:** ALL BUILDOUT IS BASED ON BRADY SULLIVAN PROPERTIES "CONSTRUCTION STANDARDS". BRADY SULLIVAN PROPERTIES RESERVES THE RIGHT TO ISSUE A CHANGE ORDER FOR ADDITIONAL WORK NOT INCLUDED IN DRAWINGS.



Brady Sullivan Properties  
670 N. Commercial Street  
Manchester, nh 03101  
603.622.6223



Owner  
**BRADY SULLIVAN  
PROPERTIES**  
MANCHESTER  
NH

Project  
**900 ELM STREET**  
MANCHESTER NH

Seals  
PROGRESS PRINT

Issues	
Date	Description

Revisions		
No.	Date	Description

Drawing Title  
**SUITE 605**

**839 RSF**

Issue Date: 3-16-2017

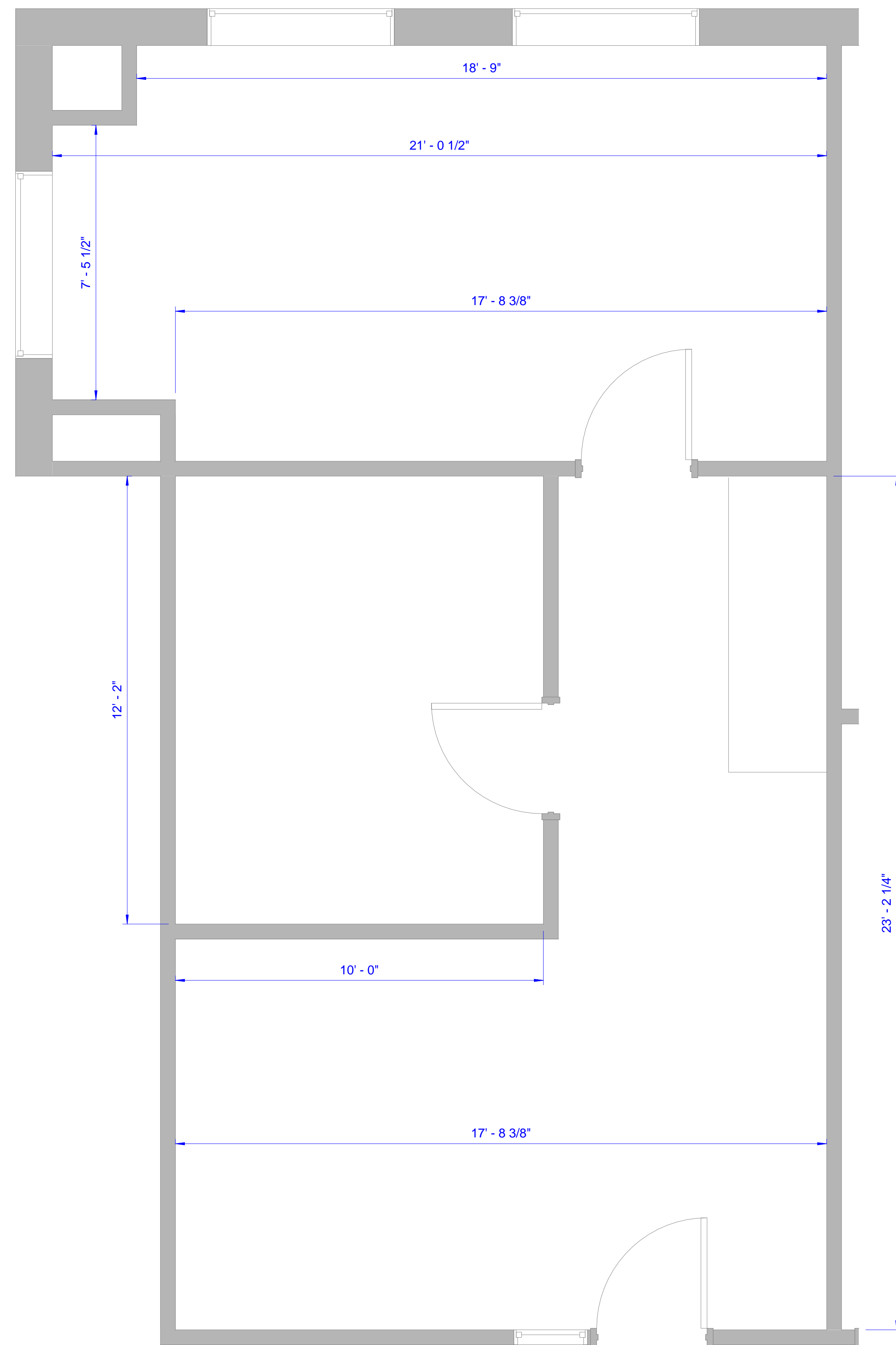
Project No: Scale: 1/2" = 1'-0"

Project Manager: Production Leader:

Project Architect: Peer Reviewer:

Drawing Number

**A.105**



**1 SUITE 605**  
1/2" = 1'-0"

**DISCLAIMER:** ALL BUILDOUT IS BASED ON BRADY SULLIVAN PROPERTIES "CONSTRUCTION STANDARDS".  
BRADY SULLIVAN PROPERTIES RESERVES THE RIGHT TO ISSUE A CHANGE ORDER FOR ADDITIONAL WORK  
NOT INCLUDED IN DRAWINGS.

3/16/2017 11:32:27 AM



Brady Sullivan Properties  
 670 N. Commercial Street  
 Manchester, nh 03101  
 603.622.6223



Owner  
**BRADY SULLIVAN  
 PROPERTIES**  
 MANCHESTER NH

Project  
**900 ELM STREET**  
 MANCHESTER NH

Seals  
 PROGRESS PRINT

Issues	
Date	Description

Revisions		
No.	Date	Description

Drawing Title  
**SUITE 703**  
**2,191 RSF**

Issue Date:	4-24-2017
Project No:	Scale: 3/8" = 1'-0"
Project Manager:	Production Leader:
Project Architect:	Peer Reviewer:

Drawing Number  
**A.108**

1  
 3/8" = 1'-0"  
**SUITE 703**



**DISCLAIMER:** ALL BUILDOUT IS BASED ON BRADY SULLIVAN PROPERTIES "CONSTRUCTION STANDARDS".  
 BRADY SULLIVAN PROPERTIES RESERVES THE RIGHT TO ISSUE A CHANGE ORDER FOR ADDITIONAL WORK  
 NOT INCLUDED IN DRAWINGS.



Brady Sullivan Properties  
670 N. Commercial Street  
Manchester, nh 03101  
603.622.6223



Owner  
**BRADY SULLIVAN  
PROPERTIES**

Project  
**8TH FLOOR**  
900 ELM STREET

Seals  
0%

Issues	
Date	Description

Revisions		
No.	Date	Description

Drawing Title  
**SUITE 801**  
**4,414 RSF**

Issue Date: 4-24-2017

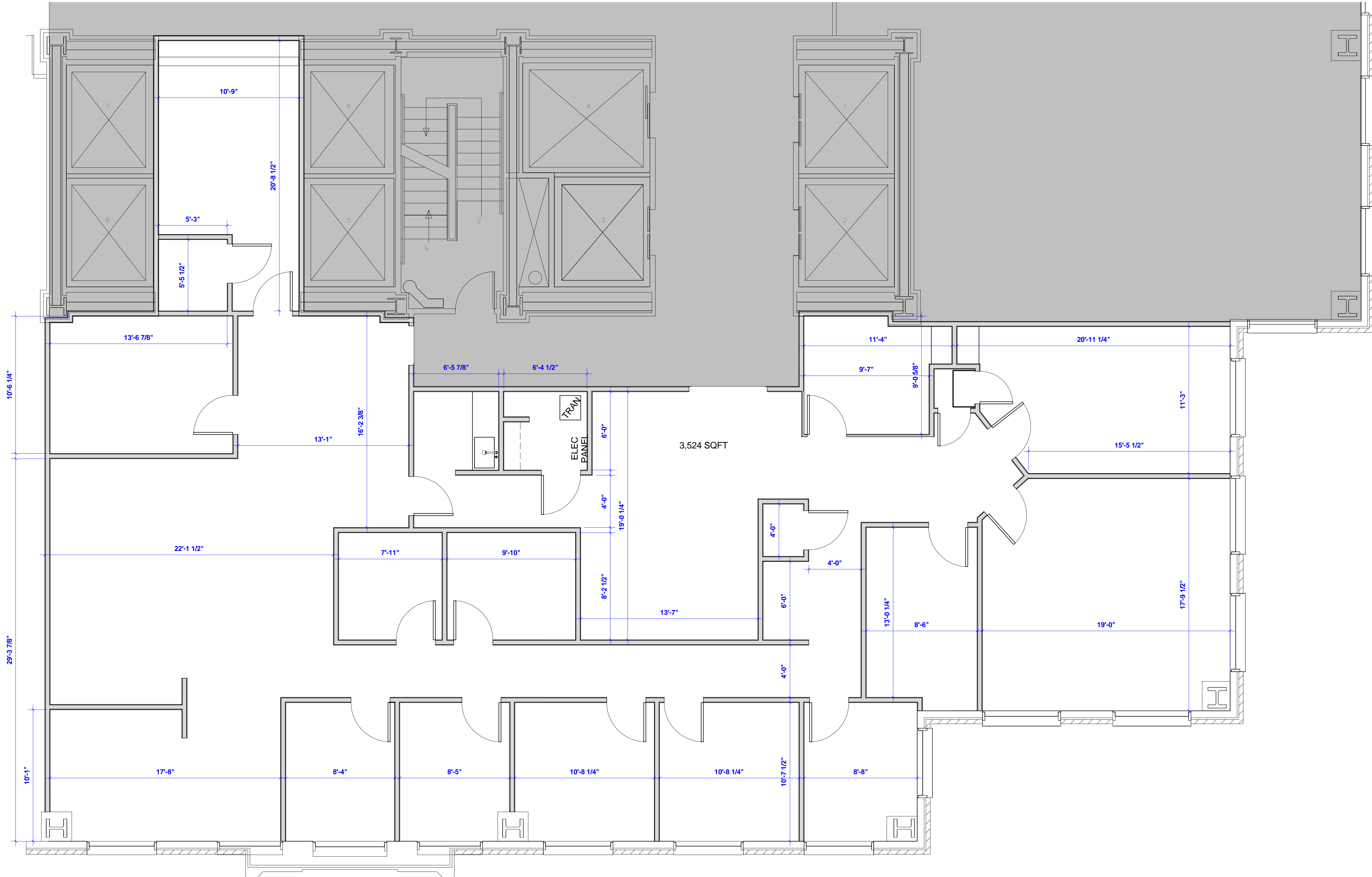
Project No: Project Number Scale: 1/4" = 1'-0"

Project Manager: Production Leader:

Project Architect: Peer Reviewer:

Drawing Number

**P1.04**



1 SUITE 801  
1/4" = 1'-0"

**DISCLAIMER:** ALL BUILDOUT IS BASED ON BRADY SULLIVAN PROPERTIES "CONSTRUCTION STANDARDS". BRADY SULLIVAN PROPERTIES RESERVES THE RIGHT TO ISSUE A CHANGE ORDER FOR ADDITIONAL WORK NOT INCLUDED IN DRAWINGS.

4/24/2017 11:38:28 AM



Brady Sullivan Properties  
670 N. Commercial Street  
Manchester, nh 03101  
603.622.6223



Owner  
**BRADY SULLIVAN  
PROPERTIES**

Project  
**900 ELM STREET**  
  
MANCHESTER NH

Seals  
PROGRESS PRINT

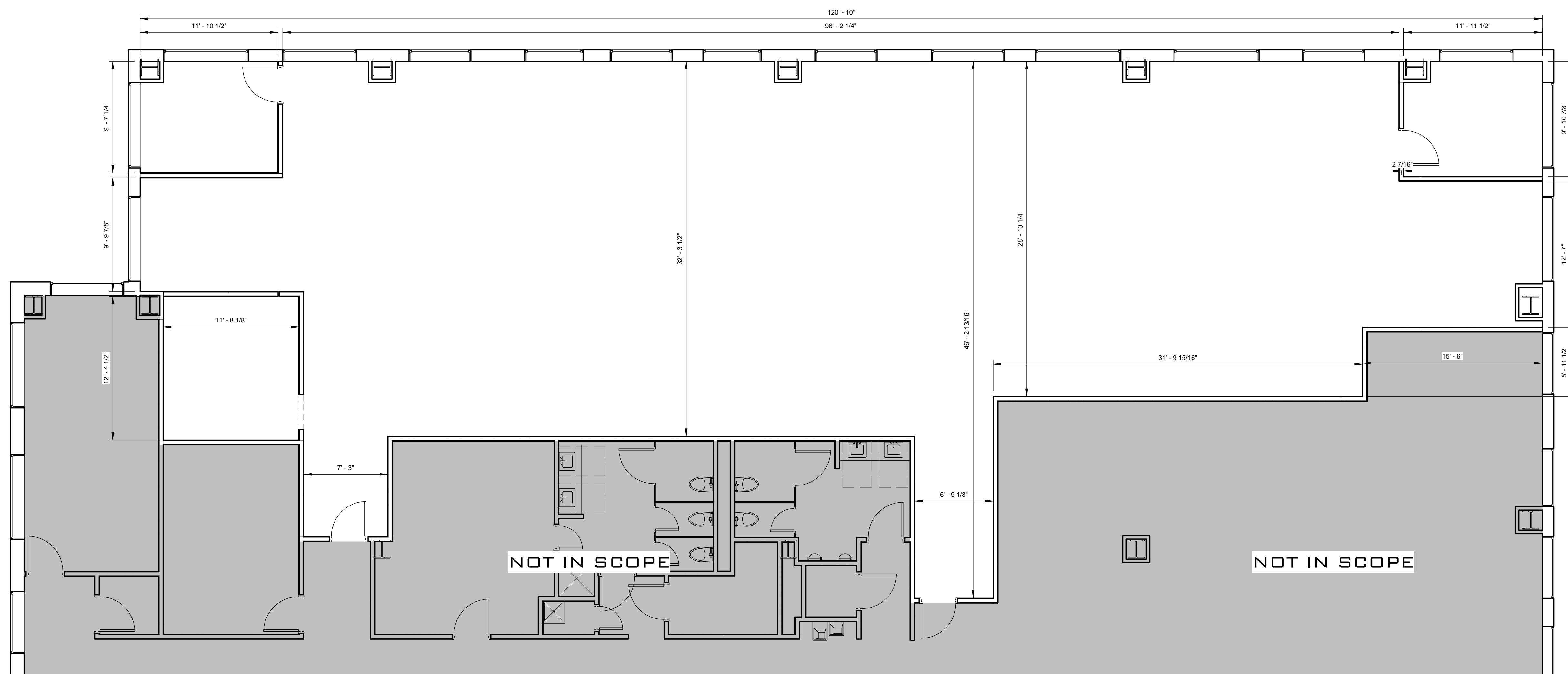
Issues	
Date	Description

Revisions		
No.	Date	Description

Drawing Title  
**SUITE 1350**  
  
**4,885 RSF**

Issue Date: 4-24-2017  
Project No:                      Scale: 3/16" = 1'-0"  
Project Manager:                      Production Leader:  
Project Architect:                      Peer Reviewer:

Drawing Number  
**A.105**



1 SUITE 1350  
3/16" = 1'-0"

**DISCLAIMER:** ALL BUILDOUT IS BASED ON BRADY SULLIVAN PROPERTIES "CONSTRUCTION STANDARDS". BRADY SULLIVAN PROPERTIES RESERVES THE RIGHT TO ISSUE A CHANGE ORDER FOR ADDITIONAL WORK NOT INCLUDED IN DRAWINGS.

**LEGEND**

	NOT IN SCOPE		PROPOSED ITEMS (HEAVY LINE WEIGHT)
	EXISTING ITEMS		EXISTING DOOR AND FRAME TO REMAIN
	NEW DOOR AND FRAME		DEMO ITEMS



1 18TH FLOOR PLAN  
3/16" = 1'-0"

**DISCLAIMER:** ALL BUILDOUT IS BASED ON BRADY SULLIVAN PROPERTIES "CONSTRUCTION STANDARDS". BRADY SULLIVAN PROPERTIES RESERVES THE RIGHT TO ISSUE A CHANGE ORDER FOR ADDITIONAL WORK NOT INCLUDED IN DRAWINGS.



Brady Sullivan Properties  
670 N. Commercial Street  
Manchester, nh 03101  
603.622.6223



Owner  
**BRADY SULLIVAN PROPERTIES**  
MANCHESTER, NH

Project  
**900 ELM STREET**  
MANCHESTER, NH

Seals

Issues

Date	Description

Revisions

No.	Date	Description

Drawing Title  
**SUITE 1800**

**14,709 RSF**

Issue Date:	4-24-2017
Project No:	Scale: As indicated
Project Manager:	Production Leader:
Project Architect: CL	Peer Reviewer: CL

Drawing Number  
**A0.4**

4/24/2017 11:46:03 AM