



Brady Sullivan Properties
 670 N. Commercial Street
 Manchester, nh 03101
 603.622.6223



Owner
**BRADY SULLIVAN
 PROPERTIES**

Project
1000 ELM STREET

 MANCHESTER, NH

Seals

Issues	
Date	Description

Revisions		
No.	Date	Description

Drawing Title
SUITE 12

13,619 RSF

Issue Date: 4-24-2017

Project No: 1055 Scale: 3/16" = 1'-0"

Project Manager: Production Leader:

Project Architect: Peer Reviewer:

Drawing Number
A1-3



1 SUITE 12
 3/16" = 1'-0"

DISCLAIMER: ALL BUILDOUT IS BASED ON BRADY SULLIVAN PROPERTIES "CONSTRUCTION STANDARDS". BRADY SULLIVAN PROPERTIES RESERVES THE RIGHT TO ISSUE A CHANGE ORDER FOR ADDITIONAL WORK NOT INCLUDED IN DRAWINGS.

4/24/2017 12:29:18 PM



Brady Sullivan Properties
 670 N. Commercial Street
 Manchester, nh 03101
 603.622.6223



Owner
 Brady Sullivan Properties

Project
 1000 ELM STREET
 MANCHESTER NH

Seals

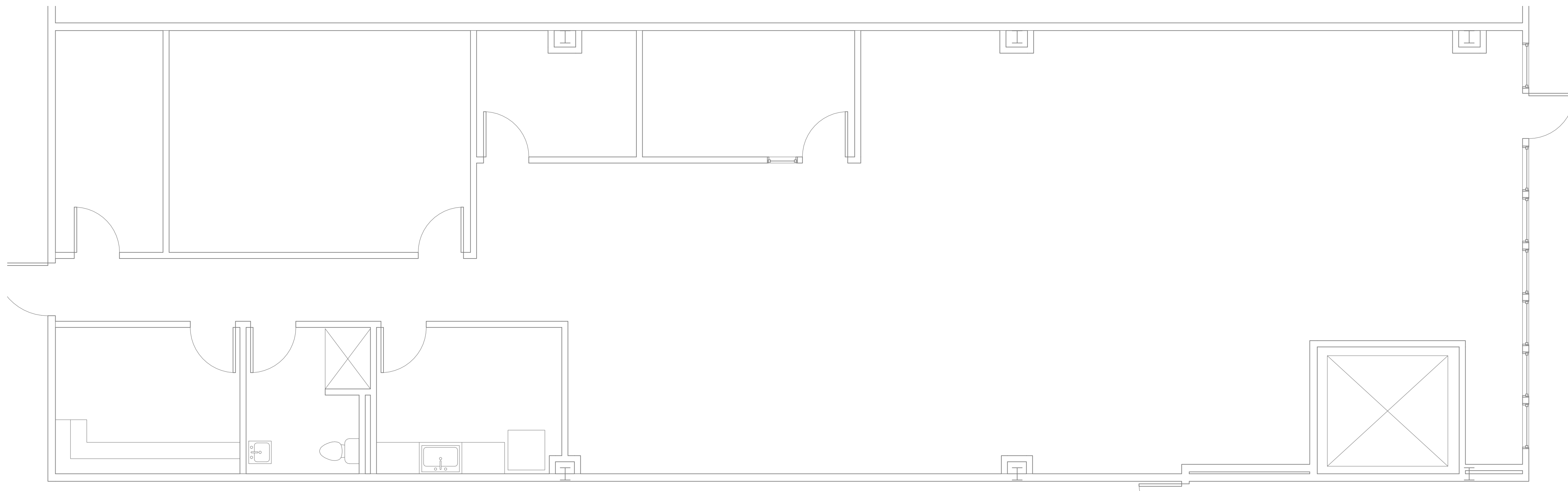
Issues	
Date	Description

Revisions	
No.	Date

Drawing Title
SUITE 14
3,226 RSF

Issue Date:	
Project No: 1055	Scale: 1/4" = 1'-0"
Project Manager:	Production Leader:
Project Architect:	Peer Reviewer:

Drawing Number
A1-10



1 SUITE 14
 1/4" = 1'-0"

DISCLAIMER: ALL BUILDOUT IS BASED ON BRADY SULLIVAN PROPERTIES "CONSTRUCTION STANDARDS".
 BRADY SULLIVAN PROPERTIES RESERVES THE RIGHT TO ISSUE A CHANGE ORDER FOR ADDITIONAL WORK
 NOT INCLUDED IN DRAWINGS.

8/10/2016 11:45:57 AM



Brady Sullivan Properties
670 N. Commercial Street
Manchester, nh 03101
603.622.6223



Owner
**BRADY SULLIVAN
PROPERTIES**

Project
1000 ELM STREET

MANCHESTER NH

Seals
0%

Issues	
Date	Description

Revisions		
No.	Date	Description

Drawing Title
SUITE 17

844 USF

Issue Date: 1-19-2017

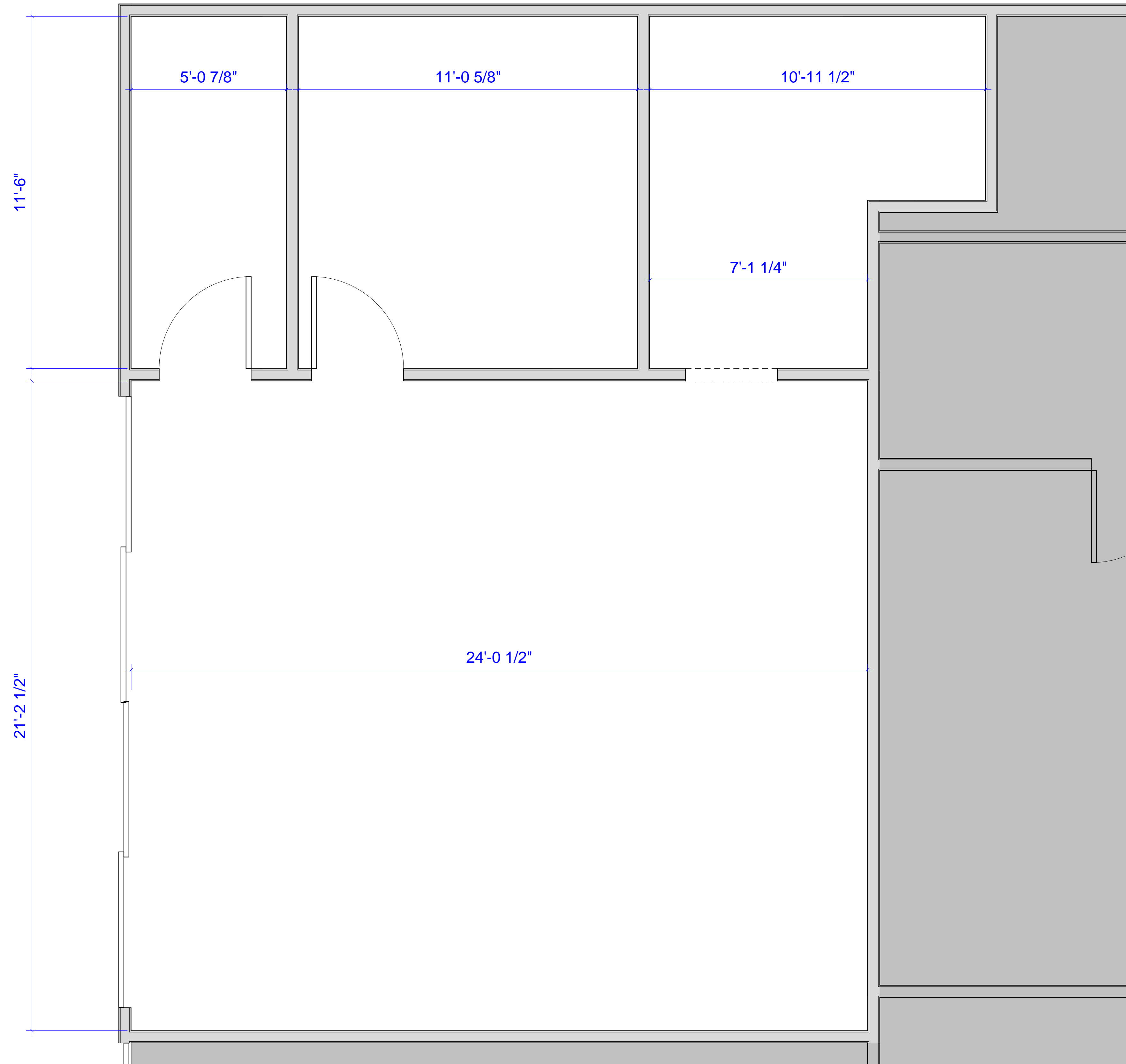
Project No: Project Number Scale: 1/2" = 1'-0"

Project Manager: Production Leader:

Project Architect: Peer Reviewer:

Drawing Number

A1-03



1 SUITE 17
1/2" = 1'-0"

DISCLAIMER: ALL BUILDOUT IS BASED ON BRADY SULLIVAN PROPERTIES "CONSTRUCTION STANDARDS".
BRADY SULLIVAN PROPERTIES RESERVES THE RIGHT TO ISSUE A CHANGE ORDER FOR ADDITIONAL WORK
NOT INCLUDED IN DRAWINGS.



Brady Sullivan Properties
 670 N. Commercial Street
 Manchester, nh 03101
 603.622.6223



Owner
**BRADY SULLIVAN
 PROPERTIES**
 MANCHESTER NH

Project
1000 ELM STREET
 MANCHESTER NH

Seals
 PROGRESS PRINT

Issues	
Date	Description

Revisions		
No.	Date	Description

Drawing Title
SUITE 18
3,001 RSF

Issue Date:	4-24-2017
Project No:	Scale: 3/8" = 1'-0"
Project Manager: MP-JV	Production Leader: MP-JV
Project Architect: RO	Peer Reviewer: MP-JV
Drawing Number	

A.106



1 SUITE 18
 3/8" = 1'-0"

DISCLAIMER: ALL BUILDOUT IS BASED ON BRADY SULLIVAN PROPERTIES "CONSTRUCTION STANDARDS".
 BRADY SULLIVAN PROPERTIES RESERVES THE RIGHT TO ISSUE A CHANGE ORDER FOR ADDITIONAL WORK
 NOT INCLUDED IN DRAWINGS.

4/24/2017 12:44:24 PM



Brady Sullivan Properties
670 N. Commercial Street
Manchester, nh 03101
603.622.6223

PROPERTY OF THE UNITED STATES GOVERNMENT
COPYING, DISSEMINATION, OR DISTRIBUTION OF
THESE DRAWINGS, PLANS, OR SPECIFICATIONS TO
UNAUTHORIZED PERSONS IS PROHIBITED
Do not remove this notice. Properly destroy documents
when no longer
needed.

© 2015 Brady Sullivan Properties

Owner
**BRADY SULLIVAN
PROPERTIES**

Project
**1000 ELM STREET
MANCHESTER NH**

Seals
0%

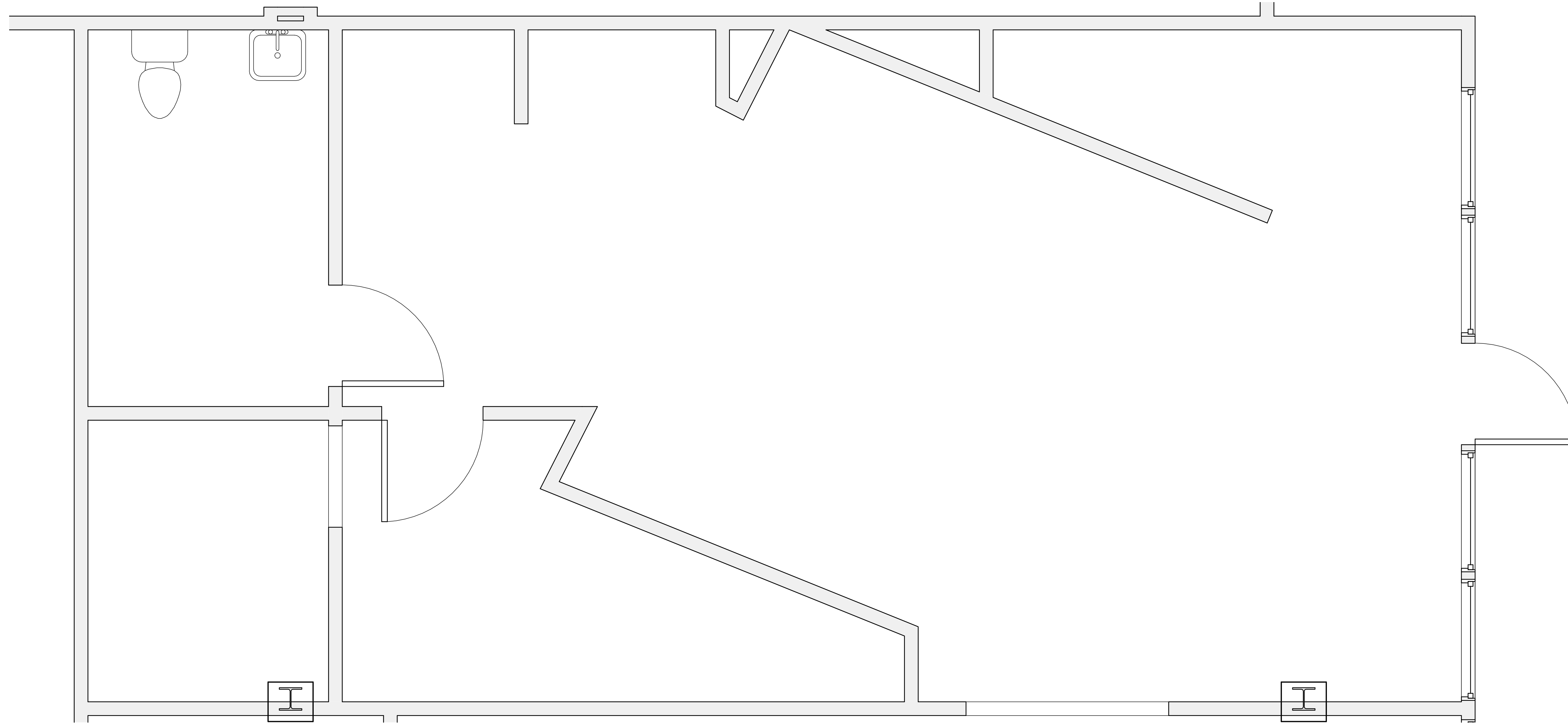
Issues	
Date	Description

Revisions		
No.	Date	Description

Drawing Title
**SUITE 35
800 RSF**

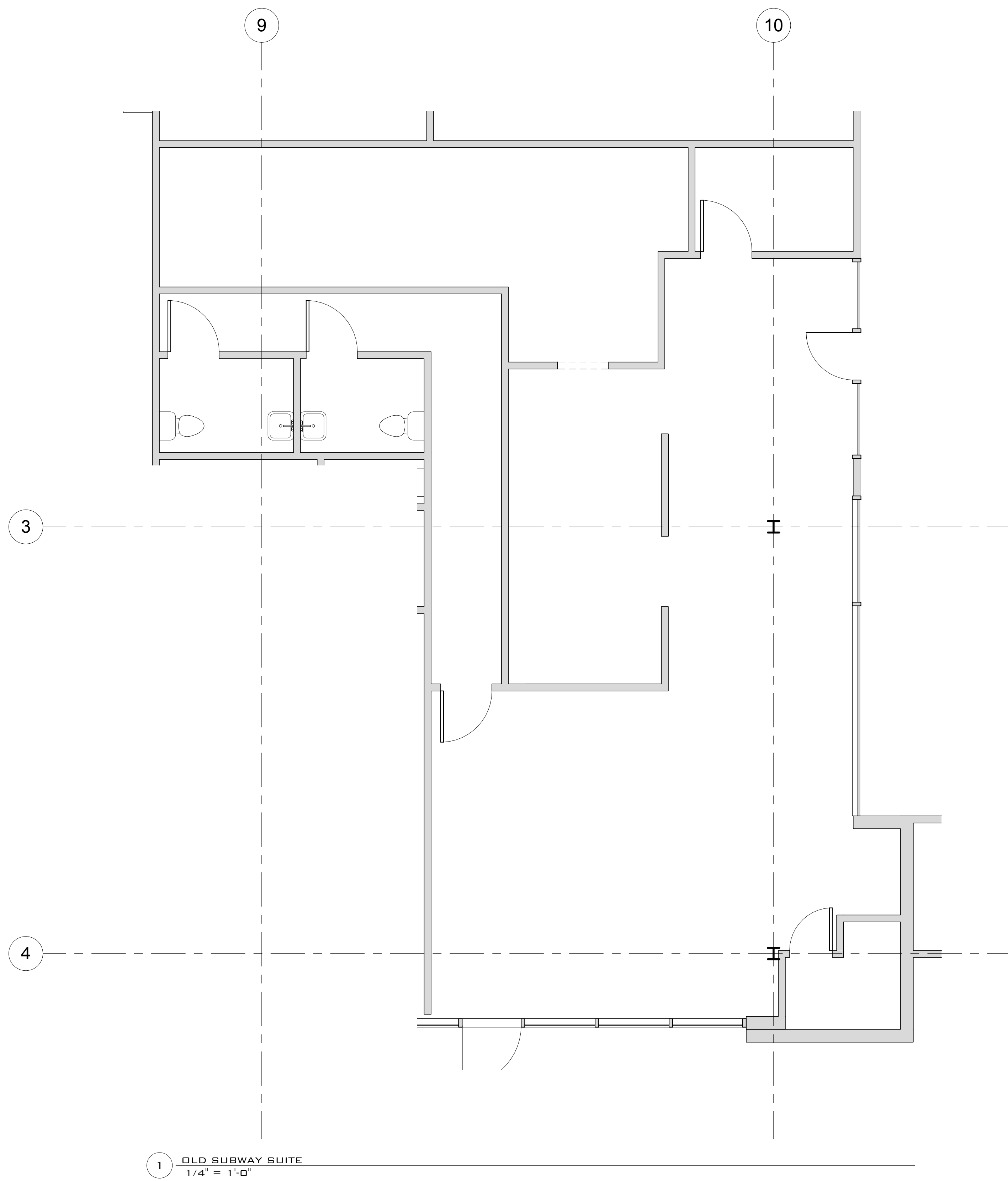
Issue Date:		Issue Date	
Project No:	Project Number	Scale:	1/2" = 1'-0"
Project Manager:		Production Leader:	
Project Architect:		Peer Reviewer:	

Drawing Number
A1-09



1 SUITE 35
1/2" = 1'-0"

5/10/2016 11:56:29 AM



1 OLD SUBWAY SUITE
1/4" = 1'-0"

BS PLAZA
1000 ELM

NO.	DESCRIPTION	DATE

**EXISTING
CONDITIONS**

PROJECT ISSUE DATE:	ISSUE DATE:
SHEET ISSUE DATE:	03/17/15
PROJECT NO.:	PROJECT NUMBER
APPROVED BY:	APPROVER
DRAWN BY:	AUTHOR
CHECKED BY:	CHECKER

A1-02



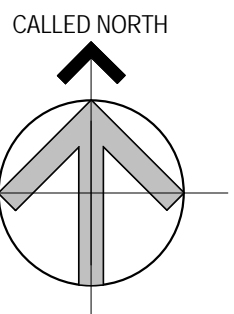
Brady Sullivan Properties
670 N. Commercial Street
Manchester, nh 03101
603.622.6223

PROPERTY OF THE UNITED STATES GOVERNMENT
COPYING, DISSEMINATION, OR DISTRIBUTION OF
THESE DRAWINGS, PLANS, OR SPECIFICATIONS TO
UNAUTHORIZED PERSONS IS PROHIBITED
Do not remove this notice. Properly destroy documents
when no longer
needed.

© 2015 Brady Sullivan Properties

Owner
Brady Sullivan Properties

Project
1000 ELM STREET
MANCHESTER NH



Seals

Issues	
Date	Description

Revisions		
No.	Date	Description

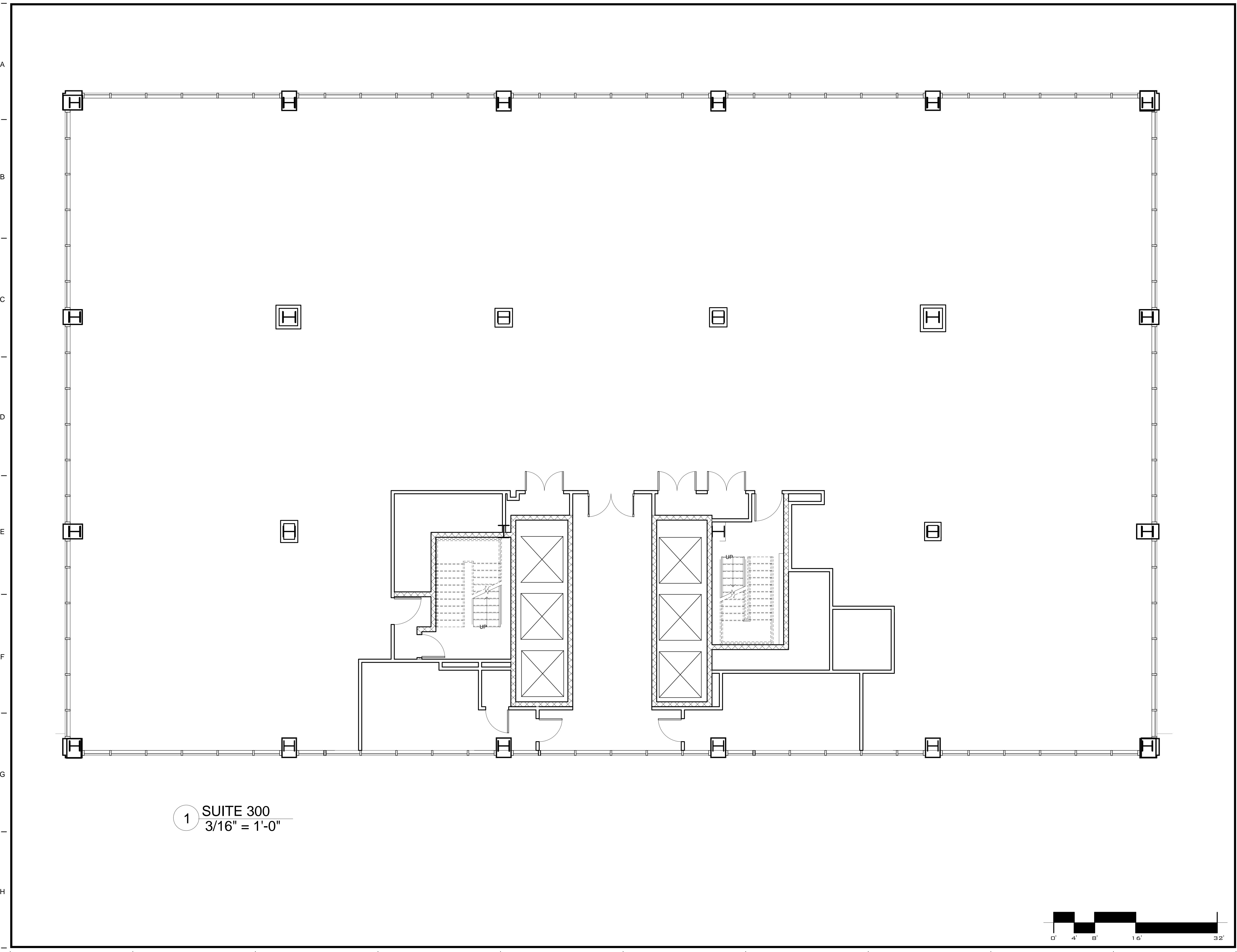
Drawing Title
SUITE 300
14,039 RSF

Issue Date:	
Project No: 1055	Scale: 3/16" = 1'-0"
Project Manager:	Production Leader:
Project Architect:	Peer Reviewer:

Drawing Number
A1-8

5/19/2016 11:25:35 AM

1 SUITE 300
3/16" = 1'-0"





Brady Sullivan Properties
670 N. Commercial Street
Manchester, nh 03101
603.622.6223

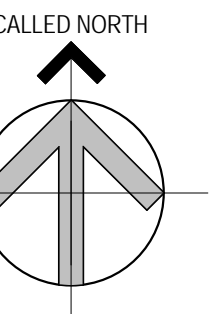
PROPERTY OF THE UNITED STATES GOVERNMENT
COPYING, DISSEMINATION, OR DISTRIBUTION OF
THESE DRAWINGS, PLANS, OR SPECIFICATIONS TO
UNAUTHORIZED PERSONS IS PROHIBITED
Do not remove this notice. Properly destroy documents
when no longer
needed.

© 2015 Brady Sullivan Properties

Owner
Brady Sullivan Properties

Project
1000 ELM STREET

MANCHESTER NH



Seals

Issues	
Date	Description

Revisions		
No.	Date	Description

Drawing Title
SUITE 400

14.039 RSF

Issue Date:

Project No: 1055 Scale: 3/16" = 1'-0"

Project Manager: Production Leader:

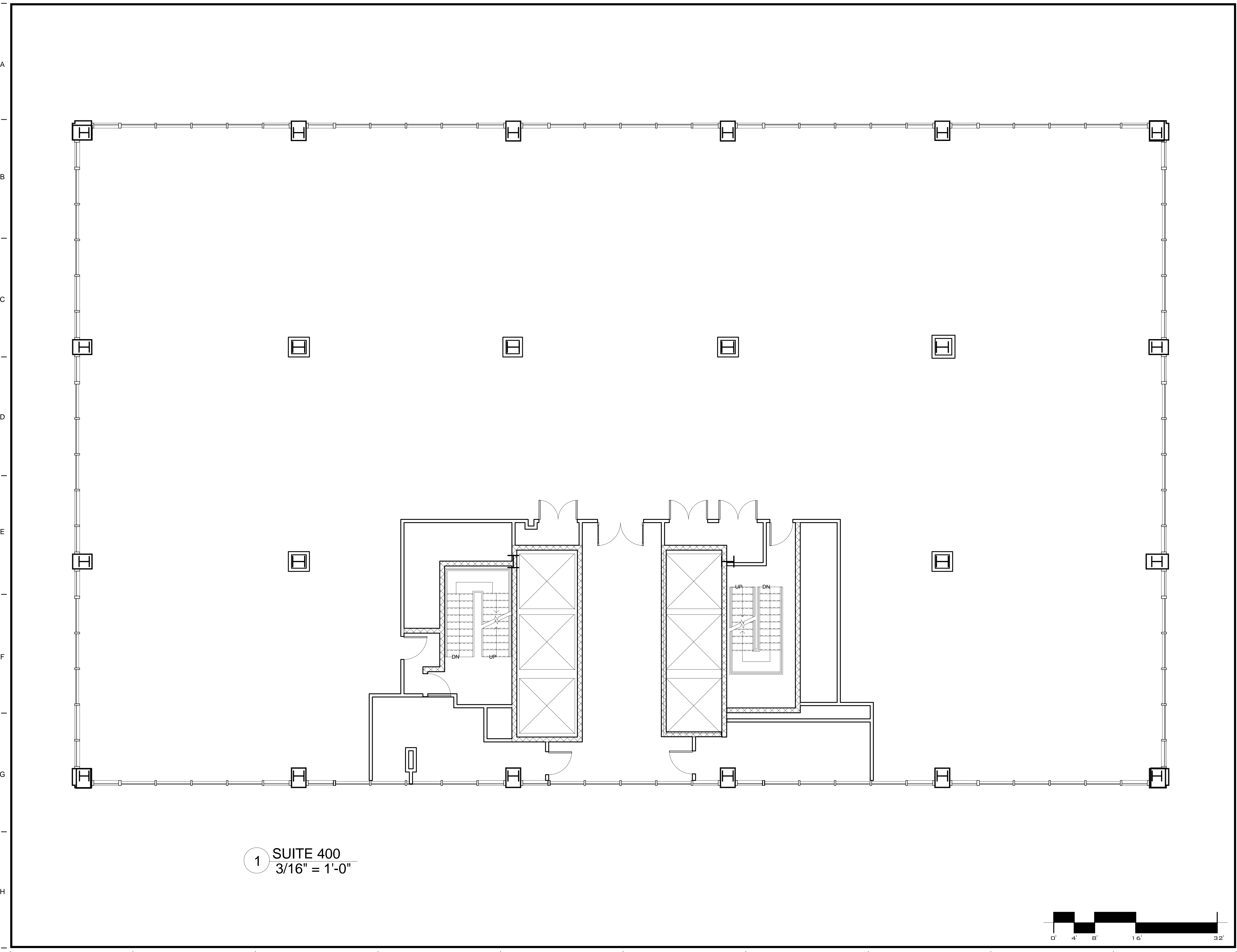
Project Architect: Peer Reviewer:

Drawing Number

A1-7

5/19/2016 11:29:15 AM

1 SUITE 400
3/16" = 1'-0"





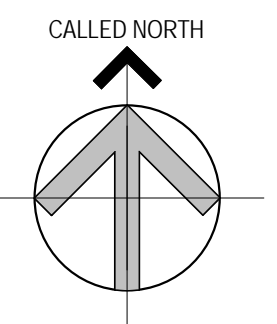
Brady Sullivan Properties
670 N. Commercial Street
Manchester, nh 03101
603.622.6223

PROPERTY OF THE UNITED STATES GOVERNMENT
COPYING, DISSEMINATION, OR DISTRIBUTION OF
THESE DRAWINGS, PLANS, OR SPECIFICATIONS TO
UNAUTHORIZED PERSONS IS PROHIBITED
Do not remove this notice. Properly destroy documents
when no longer
needed.

© 2015 Brady Sullivan Properties

Owner
Brady Sullivan Properties

Project
1000 ELM STREET
MANCHESTER NH



Seals

Issues	
Date	Description

Revisions		
No.	Date	Description

Drawing Title
SUITE 500
14,039 RSF

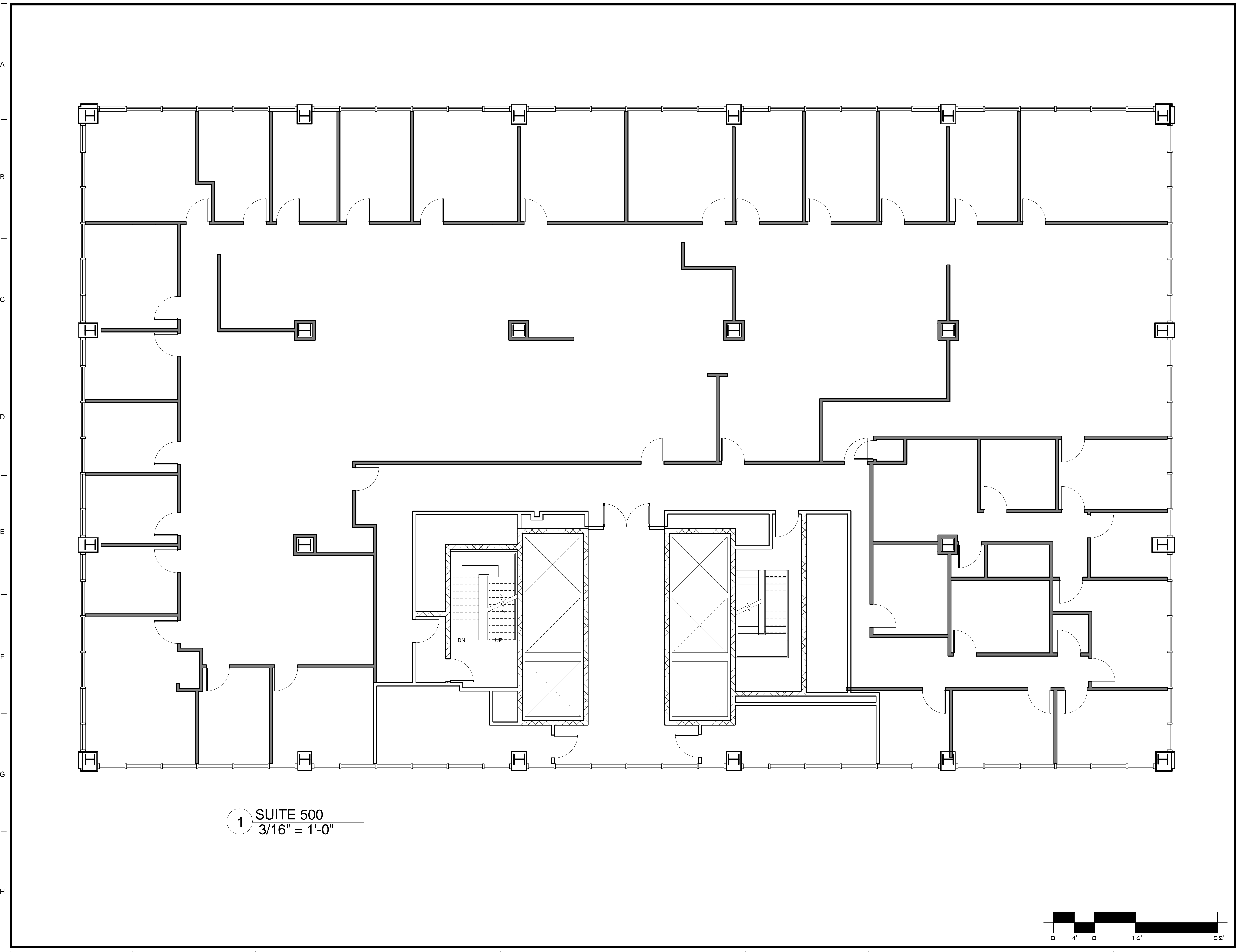
Issue Date:	
Project No: 1055	Scale: 3/16" = 1'-0"
Project Manager:	Production Leader:
Project Architect:	Peer Reviewer:
Drawing Number	

A1-9

5/19/2016 11:32:24 AM



1 SUITE 500
3/16" = 1'-0"





Brady Sullivan Properties
 670 N. Commercial Street
 Manchester, nh 03101
 603.622.6223



Owner
 Brady Sullivan Properties

Project
 1000 ELM STREET
 MANCHESTER, NH

Seals

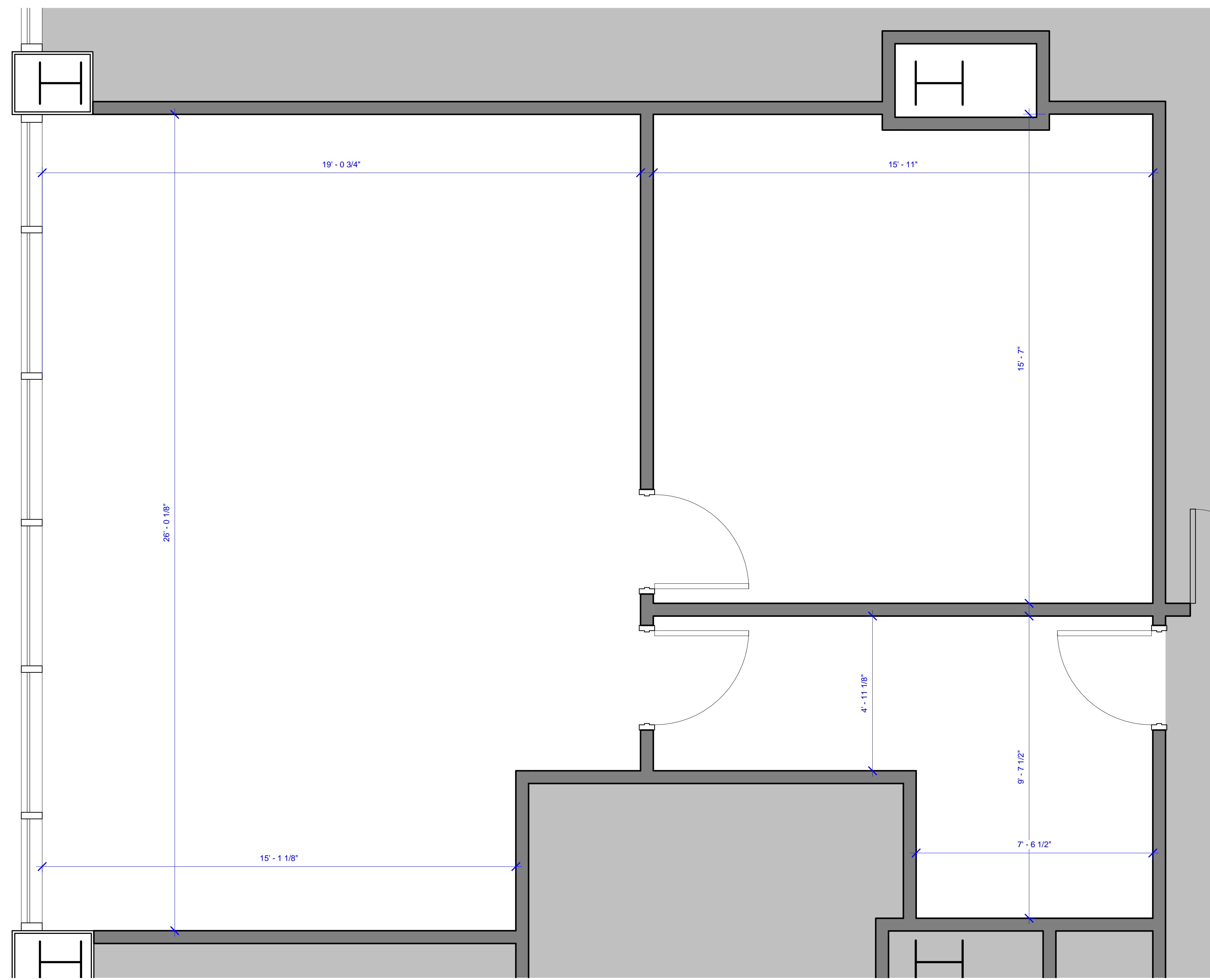
Issues	
Date	Description

Revisions		
No.	Date	Description

Drawing Title
SUITE 601
1,085 RSF

Issue Date:	3-13-2017
Project No:	1055
Scale:	1/2" = 1'-0"
Project Manager:	Production Leader:
Project Architect:	Peer Reviewer:

Drawing Number
A1-15



1 SUITE 600
 1/2" = 1'-0"

DISCLAIMER: ALL BUILDOUT IS BASED ON BRADY SULLIVAN PROPERTIES "CONSTRUCTION STANDARDS".
 BRADY SULLIVAN PROPERTIES RESERVES THE RIGHT TO ISSUE A CHANGE ORDER FOR ADDITIONAL WORK
 NOT INCLUDED IN DRAWINGS.

3/13/2017 11:14:10 AM



1 SUITE 607
1/2" = 1'-0"

DISCLAIMER: ALL BUILDOUT IS BASED ON BRADY SULLIVAN PROPERTIES "CONSTRUCTION STANDARDS". BRADY SULLIVAN PROPERTIES RESERVES THE RIGHT TO ISSUE A CHANGE ORDER FOR ADDITIONAL WORK NOT INCLUDED IN DRAWINGS.

3/13/2017 11:29:46 AM

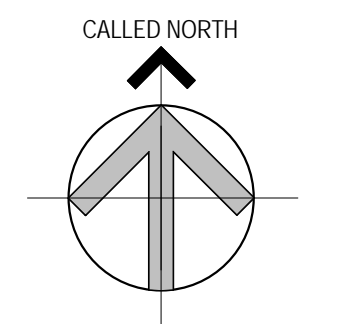


Brady Sullivan Properties
670 N. Commercial Street
Manchester, nh 03101
603.622.6223



Owner
Brady Sullivan Properties

Project
1000 ELM STREET
MANCHESTER, NH



Seals

Issues	
Date	Description

Revisions	
No.	Date

Drawing Title
SUITE 607
1,824 RSF

Issue Date:	3-13-2017
Project No:	1055
Scale:	1/2" = 1'-0"
Project Manager:	Production Leader:
Project Architect:	Peer Reviewer:

Drawing Number
A1-16



Brady Sullivan Properties
670 N. Commercial Street
Manchester, nh 03101
603.622.6223



Owner
Brady Sullivan Properties

Project
1000 ELM STREET
MANCHESTER NH

Seals

Issues	
Date	Description

Revisions		
No.	Date	Description

Drawing Title
SUITE 802
3,424 RSF

Issue Date: 9-22-16

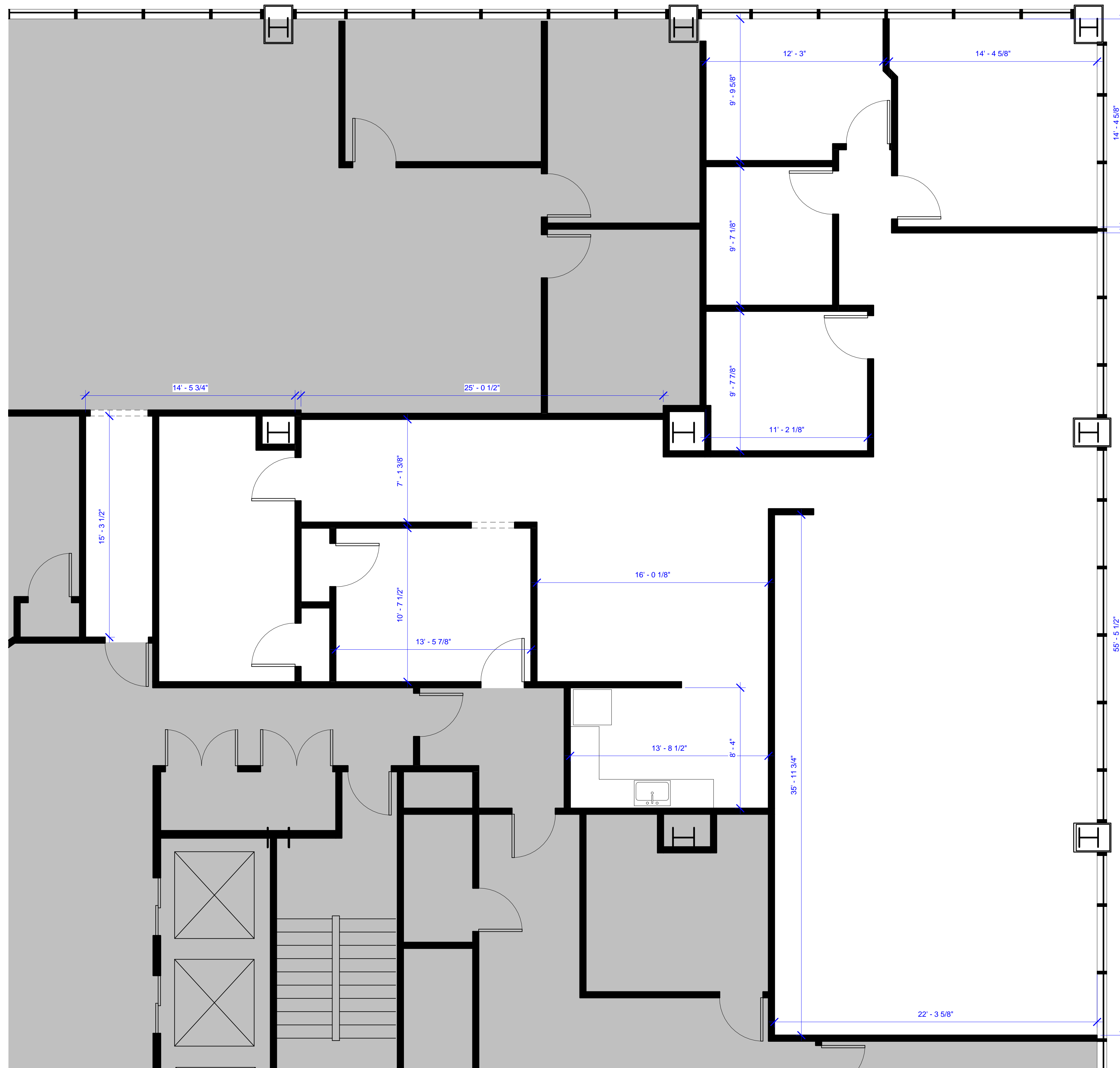
Project No: 1055 Scale: 1/4" = 1'-0"

Project Manager: Production Leader:

Project Architect: Peer Reviewer:

Drawing Number

A1-13



1 SUITE 802
1/4" = 1'-0"

DISCLAIMER: ALL BUILDOUT IS BASED ON BRADY SULLIVAN PROPERTIES "CONSTRUCTION STANDARDS".
BRADY SULLIVAN PROPERTIES RESERVES THE RIGHT TO ISSUE A CHANGE ORDER FOR ADDITIONAL WORK
NOT INCLUDED IN DRAWINGS.



Brady Sullivan Properties
 670 N. Commercial Street
 Manchester, nh 03101
 603.622.6223



Owner
 Brady Sullivan Properties

Project
 1000 ELM STREET
 MANCHESTER NH

Seals

Issues	
Date	Description

Revisions		
No.	Date	Description

Drawing Title
SUITE 803
 1,871 RSF

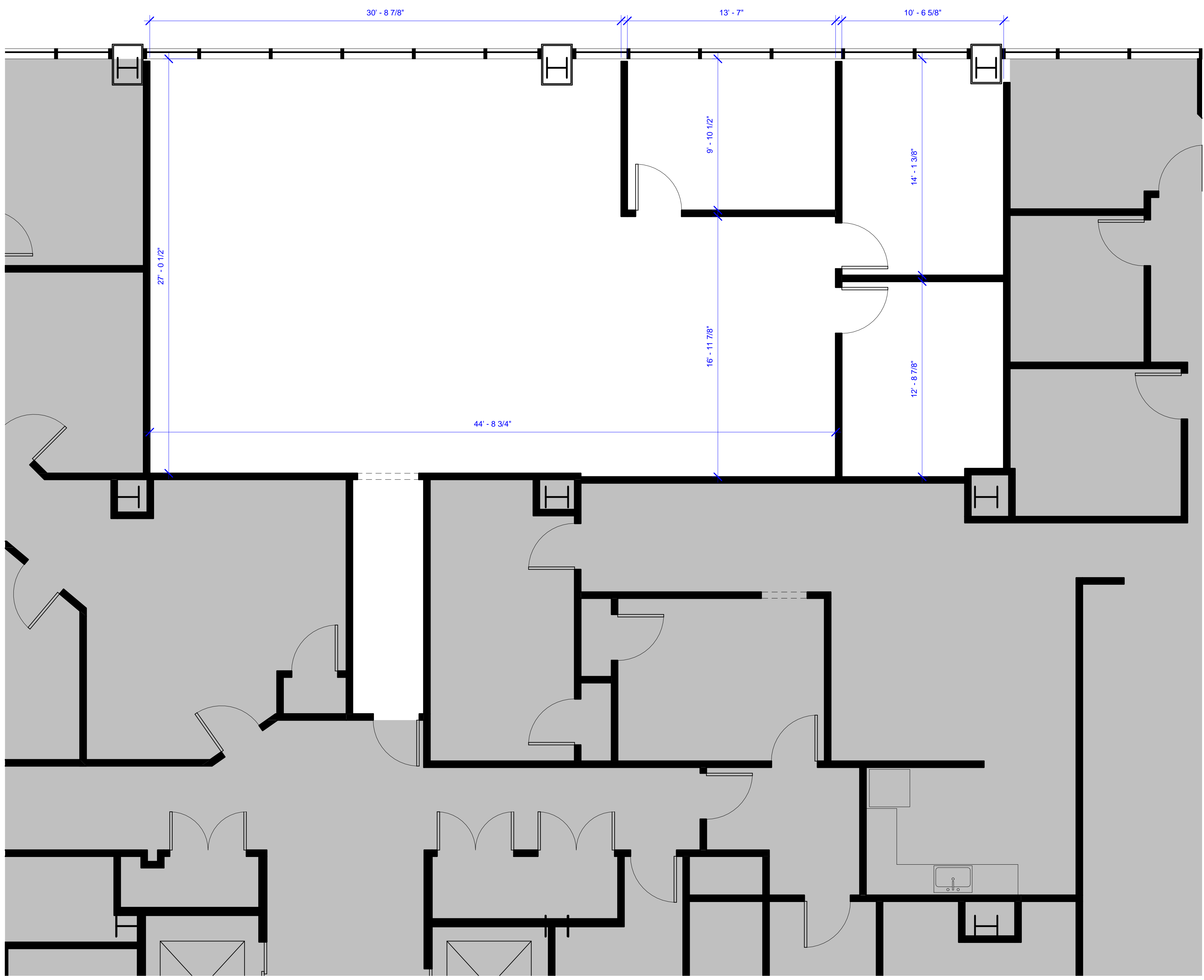
Issue Date: 9-22-16

Project No: 1055 Scale: 1/4" = 1'-0"

Project Manager: Production Leader:

Project Architect: Peer Reviewer:

Drawing Number
A1-14



1 SUITE 803
 1/4" = 1'-0"

DISCLAIMER: ALL BUILDOUT IS BASED ON BRADY SULLIVAN PROPERTIES "CONSTRUCTION STANDARDS".
 BRADY SULLIVAN PROPERTIES RESERVES THE RIGHT TO ISSUE A CHANGE ORDER FOR ADDITIONAL WORK
 NOT INCLUDED IN DRAWINGS.

9/22/2016 3:46:00 PM



Brady Sullivan Properties
670 N. Commercial Street
Manchester, nh 03101
603.622.6223

PROPERTY OF THE UNITED STATES GOVERNMENT
COPYING, DISSEMINATION, OR DISTRIBUTION OF
THESE DRAWINGS, PLANS, OR SPECIFICATIONS TO
UNAUTHORIZED PERSONS IS PROHIBITED
Do not remove this notice. Properly destroy documents
when no longer
needed.

© 2015 Brady Sullivan Properties

Owner
**BRADY SULLIVAN
PROPERTIES**

Project
**BRADY SULLIVAN
PLAZA**
1000 ELM STREET, MANCHESTER,
NH 03101

Seals
0%

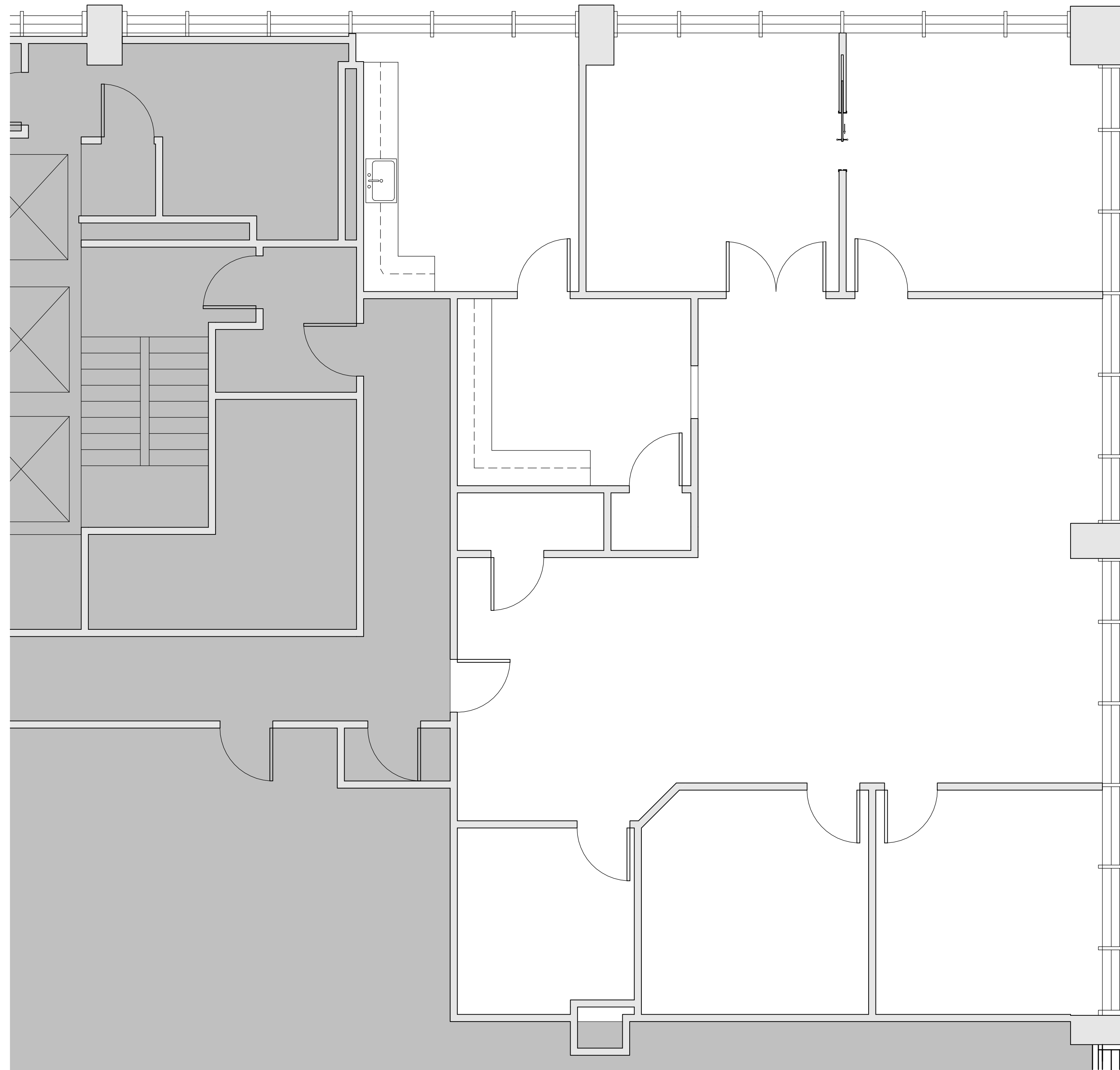
Issues	
Date	Description

Revisions		
No.	Date	Description

Drawing Title
SUITE 2001
2,676 RSF

Issue Date:		Issue Date	
Project No:	Project Number	Scale:	1/4" = 1'-0"
Project Manager:		Production Leader:	
Project Architect:		Peer Reviewer:	

Drawing Number
A1.06



1 SUITE 2001
1/4" = 1'-0"

5/10/2016 12:49:58 PM