



Brady Sullivan Properties  
670 N. Commercial Street  
Manchester, nh 03101  
603.622.6223

PROPERTY OF THE UNITED STATES GOVERNMENT  
COPYING, DISSEMINATION, OR DISTRIBUTION OF  
THESE DRAWINGS, PLANS, OR SPECIFICATIONS TO  
UNAUTHORIZED PERSONS IS PROHIBITED  
Do not remove this notice. Properly destroy documents  
when no longer  
needed.

© 2015 Brady Sullivan Properties

Owner  
**BRADY SULLIVAN  
PROPERTIES**  
MANCHESTER  
NH

Project  
**410 AMHERST STREET**  
NASHUA, NH

Seals

Issues	
Date	Description

Revisions		
No.	Date	Description

Drawing Title  
**SUITE 1**  
**5,969 RSF**

Issue Date:	
Project No:	Scale: 1/4" = 1'-0"
Project Manager:	Production Leader:
Project Architect: RO	Peer Reviewer: CL

Drawing Number  
**A0.0**



**1 SUITE 1**  
1/4" = 1'-0"

5/5/2016 4:28:18 PM



Brady Sullivan Properties  
670 N. Commercial Street  
Manchester, nh 03101  
603.622.6223

PROPERTY OF THE UNITED STATES GOVERNMENT  
COPYING, DISSEMINATION, OR DISTRIBUTION OF  
THESE DRAWINGS, PLANS, OR SPECIFICATIONS TO  
UNAUTHORIZED PERSONS IS PROHIBITED  
Do not remove this notice. Properly destroy documents  
when no longer needed.

© 2015 Brady Sullivan Properties

Owner

**BRADY SULLIVAN  
PROPERTIES**

MANCHESTER NH

Project

**410 AMHERST STREET**

Nashua NH

Seals

Issues

Date	Description

Revisions

No.	Date	Description

Drawing Title

**SUITE 2**

**5,968 RSF**

Issue Date:

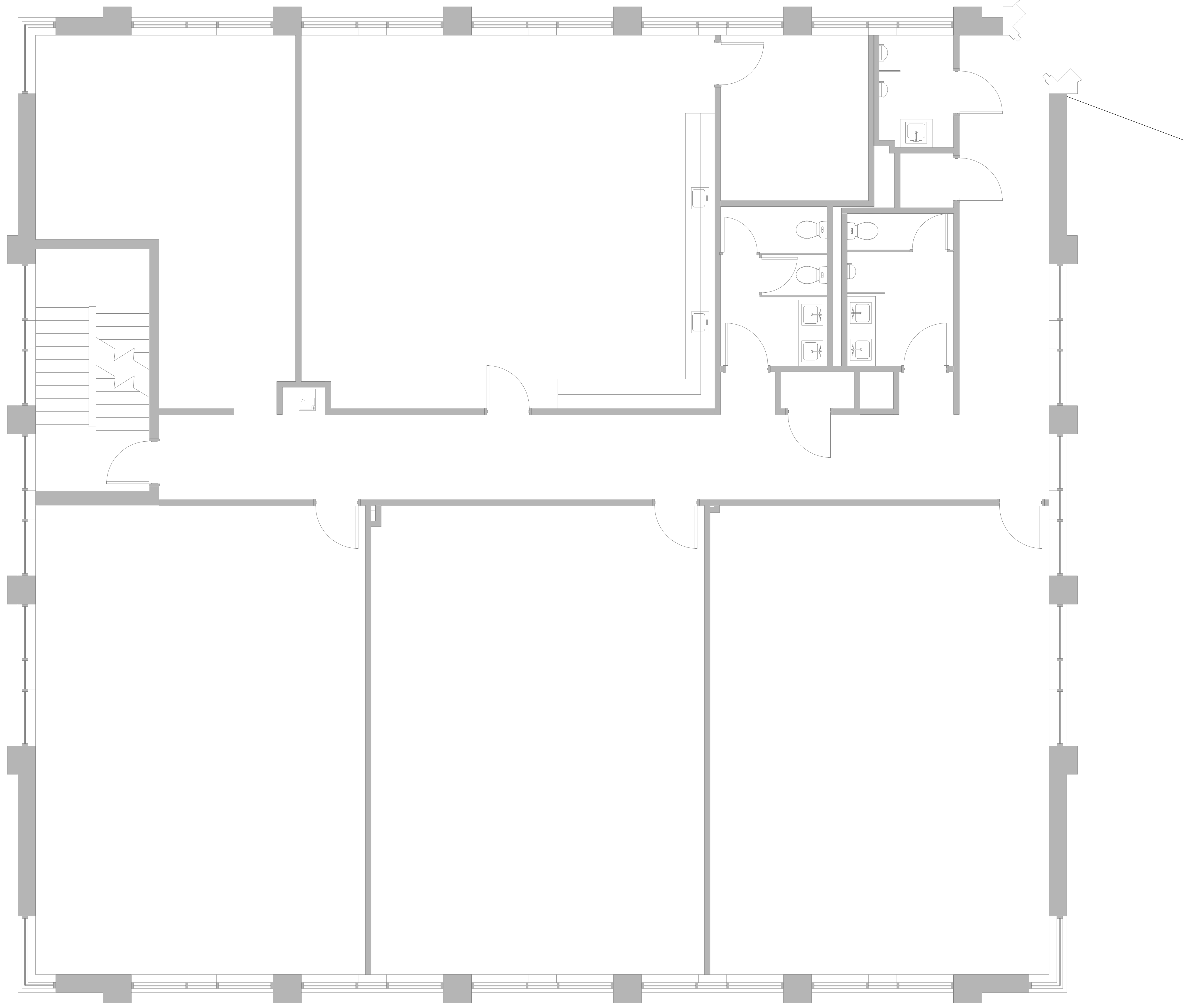
Project No:                      Scale: 1/4" = 1'-0"

Project Manager:                      Production Leader:

Project Architect: RO                      Peer Reviewer: CL

Drawing Number

**A1-6**



1 SUITE 2  
1/4" = 1'-0"

5/5/2016 4:31:13 PM



Brady Sullivan Properties  
670 N. Commercial Street  
Manchester, nh 03101  
603.622.6223

PROPERTY OF THE UNITED STATES GOVERNMENT  
COPYING, DISSEMINATION, OR DISTRIBUTION OF  
THESE DRAWINGS, PLANS, OR SPECIFICATIONS TO  
UNAUTHORIZED PERSONS IS PROHIBITED  
Do not remove this notice. Properly destroy documents  
when no longer needed.

© 2015 Brady Sullivan Properties

Owner  
**BRADY SULLIVAN  
PROPERTIES**  
MANCHESTER NH

Project  
**410 AMHERST STREET**  
NASHUA NH

Seals

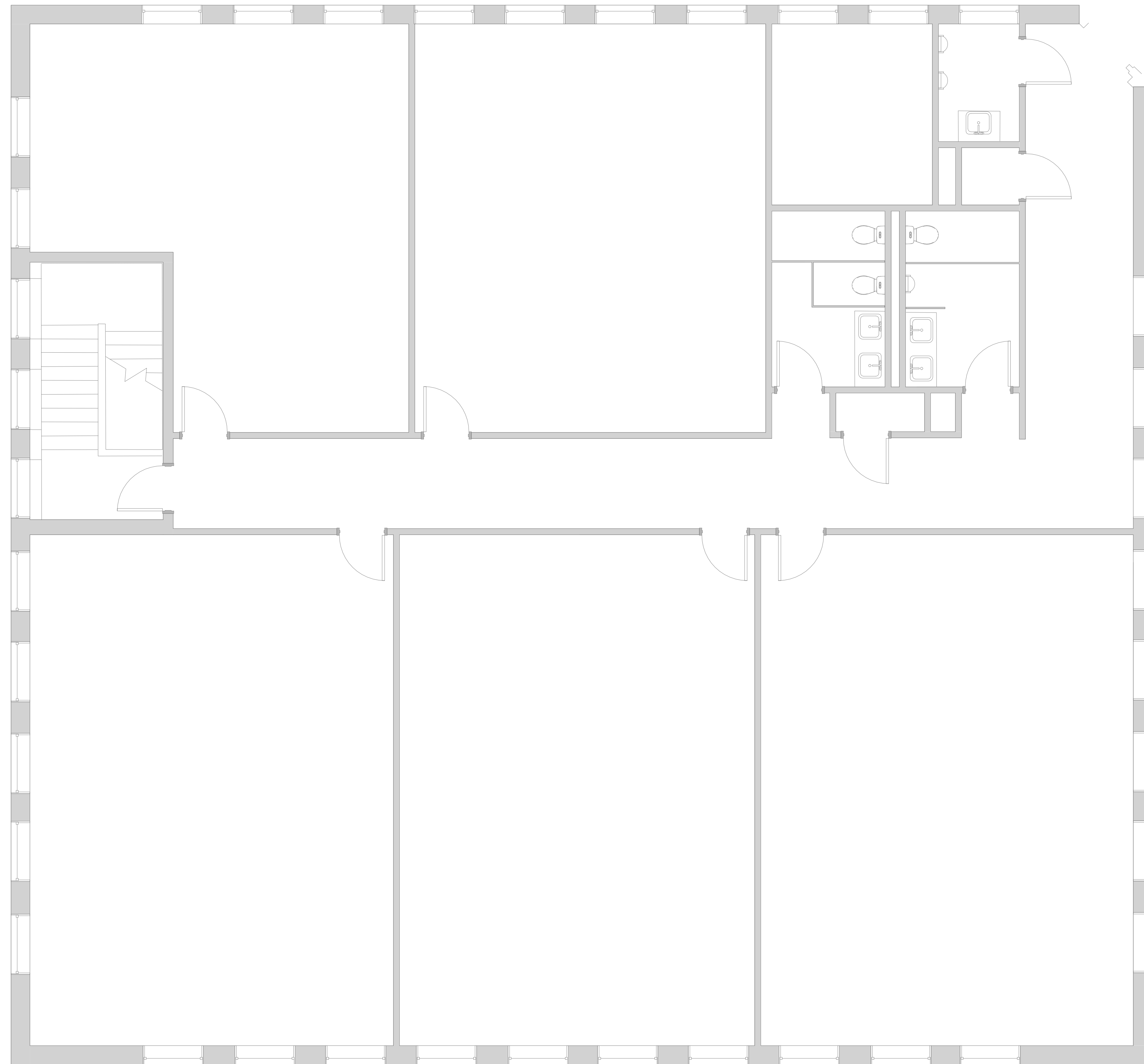
Issues	
Date	Description

Revisions		
No.	Date	Description

Drawing Title  
**SUITE 3**  
**5,968 RSF**

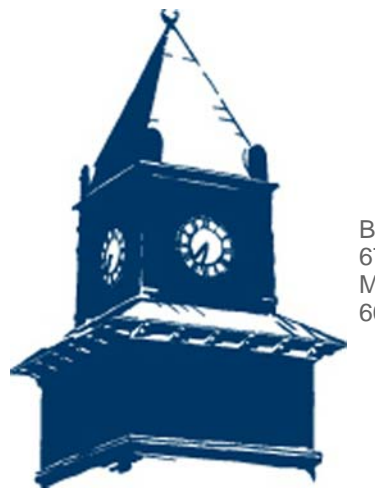
Issue Date:	
Project No:	Scale: 1/4" = 1'-0"
Project Manager:	Production Leader:
Project Architect: CL	Peer Reviewer: CL

Drawing Number  
**A0.7**



1 SUITE 3  
1/4" = 1'-0"

5/5/2016 4:40:14 PM



Brady Sullivan Properties  
670 N. Commercial Street  
Manchester, nh 03101  
603.622.6223

PROPERTY OF THE UNITED STATES GOVERNMENT  
COPYING, DISSEMINATION, OR DISTRIBUTION OF  
THESE DRAWINGS, PLANS, OR SPECIFICATIONS TO  
UNAUTHORIZED PERSONS IS PROHIBITED  
Do not remove this notice. Properly destroy documents  
when no longer needed.

© 2015 Brady Sullivan Properties

Owner

**BRADY SULLIVAN  
PROPERTIES**

MANCHESTER  
NH

Project

**410 AMHERST STREET**

NASHUA, NH

Seals

Issues

Date	Description

Revisions

No.	Date	Description

Drawing Title

**SUITE 110**

**9,600 RSF**

Issue Date:

Project No:                      Scale:    3/16" = 1'-0"

Project Manager:                      Production Leader:

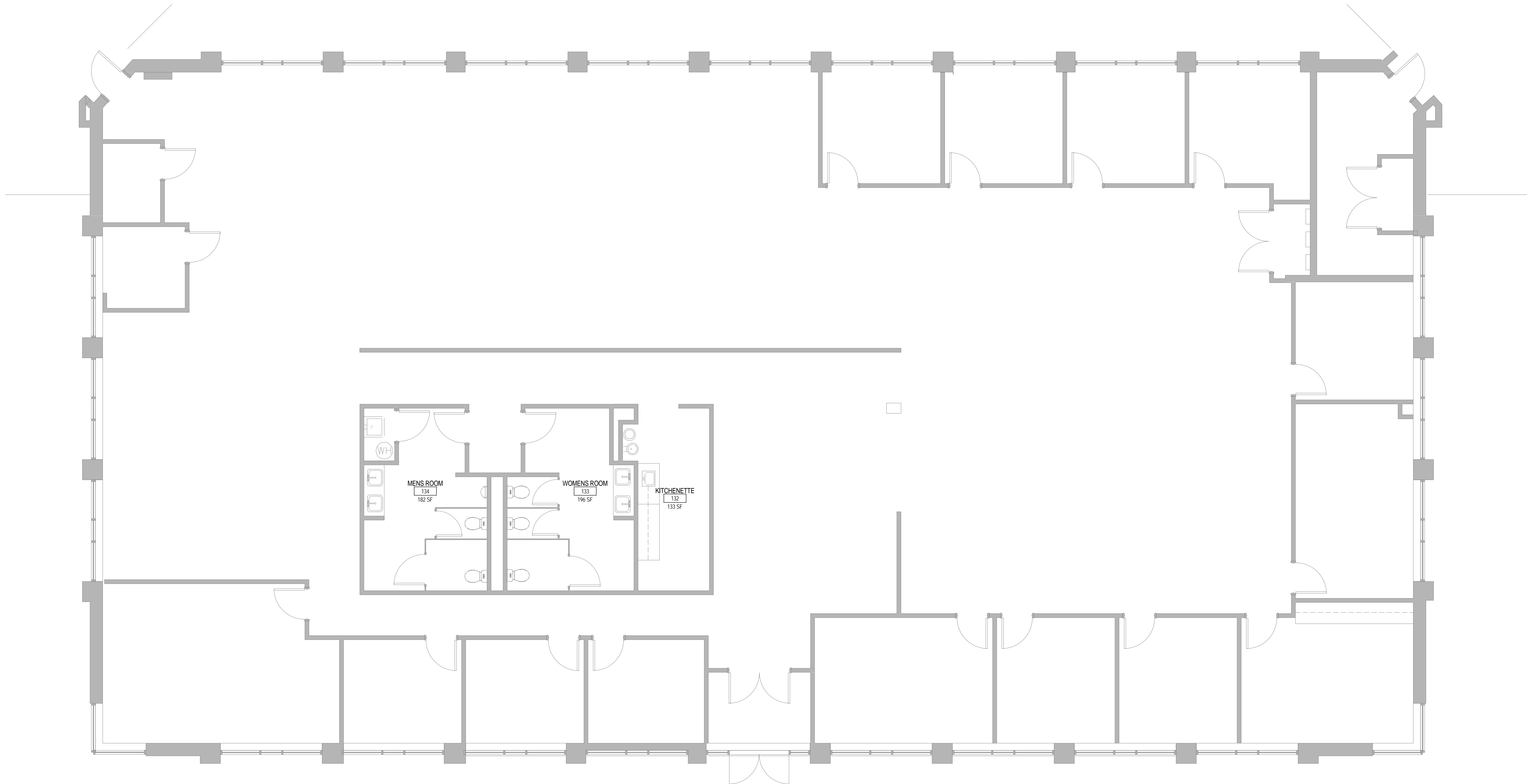
Project Architect:    RO                      Peer Reviewer:    CL

Drawing Number

**A0.4**

5/5/2016 4:27:36 PM

**1 SUITE 110**  
3/16" = 1'-0"





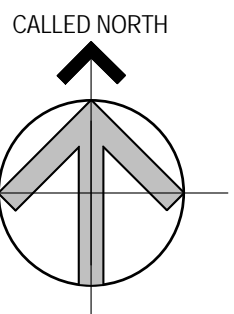
Brady Sullivan Properties  
670 N. Commercial Street  
Manchester, nh 03101  
603.622.6223

PROPERTY OF THE UNITED STATES GOVERNMENT  
COPYING, DISSEMINATION, OR DISTRIBUTION OF  
THESE DRAWINGS, PLANS, OR SPECIFICATIONS TO  
UNAUTHORIZED PERSONS IS PROHIBITED  
Do not remove this notice. Properly destroy documents  
when no longer  
needed.

© 2015 Brady Sullivan Properties

Owner  
**BRADY SULLIVAN  
PROPERTIES**  
MANCHESTER  
NH

Project  
**410 AMHERST STREET**  
NASHUA, NH



Seals

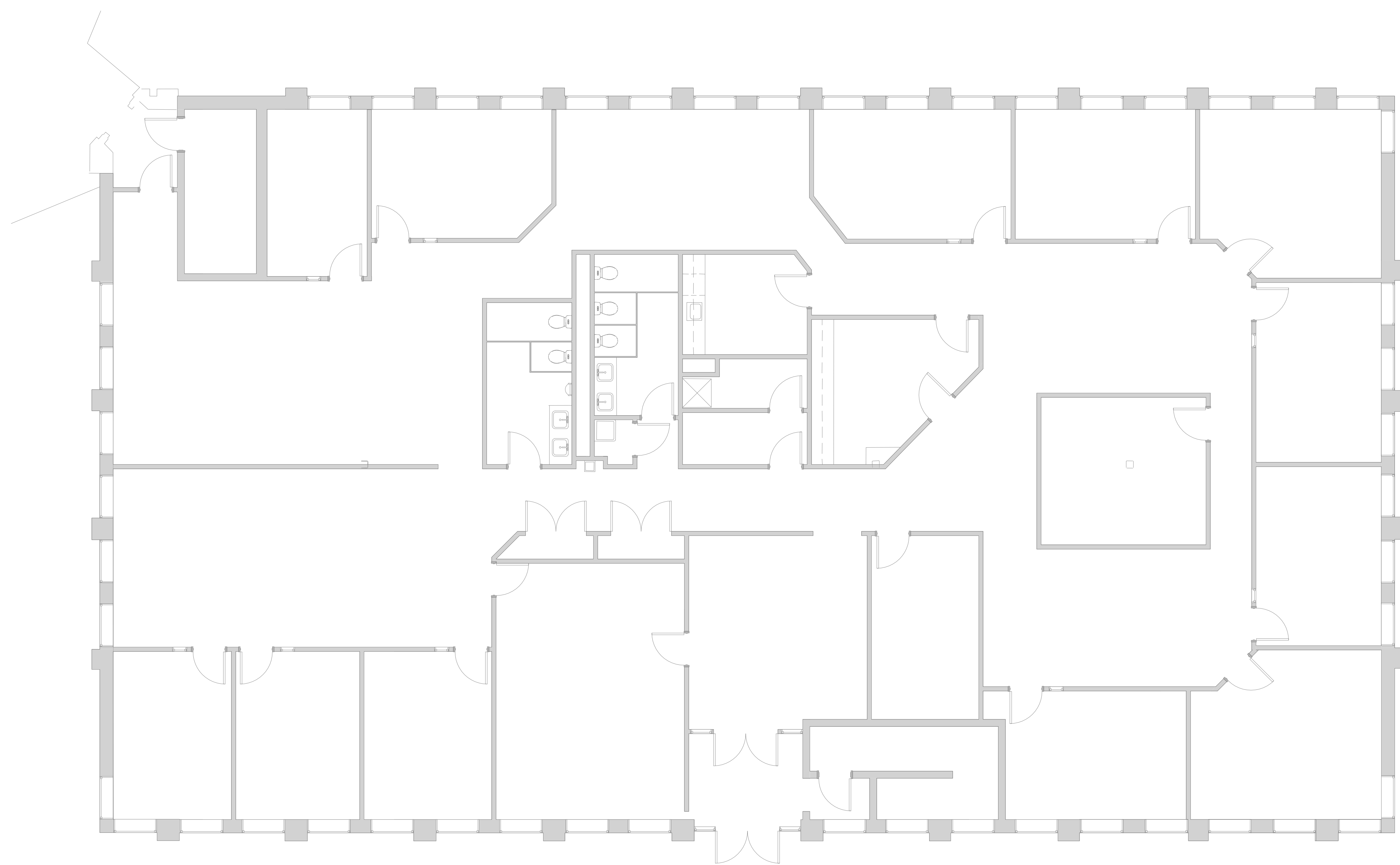
Issues	
Date	Description

Revisions		
No.	Date	Description

Drawing Title  
**SUITE 150**  
**8,070 RSF**

Issue Date:	
Project No:	Scale: 3/16" = 1'-0"
Project Manager:	Production Leader:
Project Architect: RO	Peer Reviewer: CL

Drawing Number  
**A0.5**



1 SUITE 150  
3/16" = 1'-0"



5/5/2016 4:28:30 PM



Brady Sullivan Properties  
670 N. Commercial Street  
Manchester, nh 03101  
603.622.6223

PROPERTY OF THE UNITED STATES GOVERNMENT  
COPYING, DISSEMINATION, OR DISTRIBUTION OF  
THESE DRAWINGS, PLANS, OR SPECIFICATIONS TO  
UNAUTHORIZED PERSONS IS PROHIBITED  
Do not remove this notice. Properly destroy documents  
when no longer  
needed.

© 2015 Brady Sullivan Properties

Owner

**BRADY SULLIVAN  
PROPERTIES**

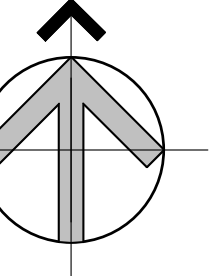
MANCHESTER NH

Project

**410 AMHERST STREET**

Nashua NH

CALLLED NORTH



Seals

Issues

Date	Description

Revisions

No.	Date	Description

Drawing Title

**SUITE 200**

**3,589 RSF**

Issue Date:

Project No:                      Scale: 1/4" = 1'-0"

Project Manager:                      Production Leader:

Project Architect: RO                      Peer Reviewer: CL

Drawing Number

**A1-3**

5/5/2016 4:38:45 PM



1 SUITE 200  
1/4" = 1'-0"





Brady Sullivan Properties  
670 N. Commercial Street  
Manchester, nh 03101  
603.622.6223

PROPERTY OF THE UNITED STATES GOVERNMENT  
COPYING, DISSEMINATION, OR DISTRIBUTION OF  
THESE DRAWINGS, PLANS, OR SPECIFICATIONS TO  
UNAUTHORIZED PERSONS IS PROHIBITED  
Do not remove this notice. Properly destroy documents  
when no longer  
needed.

© 2015 Brady Sullivan Properties

Owner  
**BRADY SULLIVAN  
PROPERTIES**  
MANCHESTER NH

Project  
**410 AMHERST STREET**  
Nashua NH

Seals

Issues	
Date	Description

Revisions		
No.	Date	Description

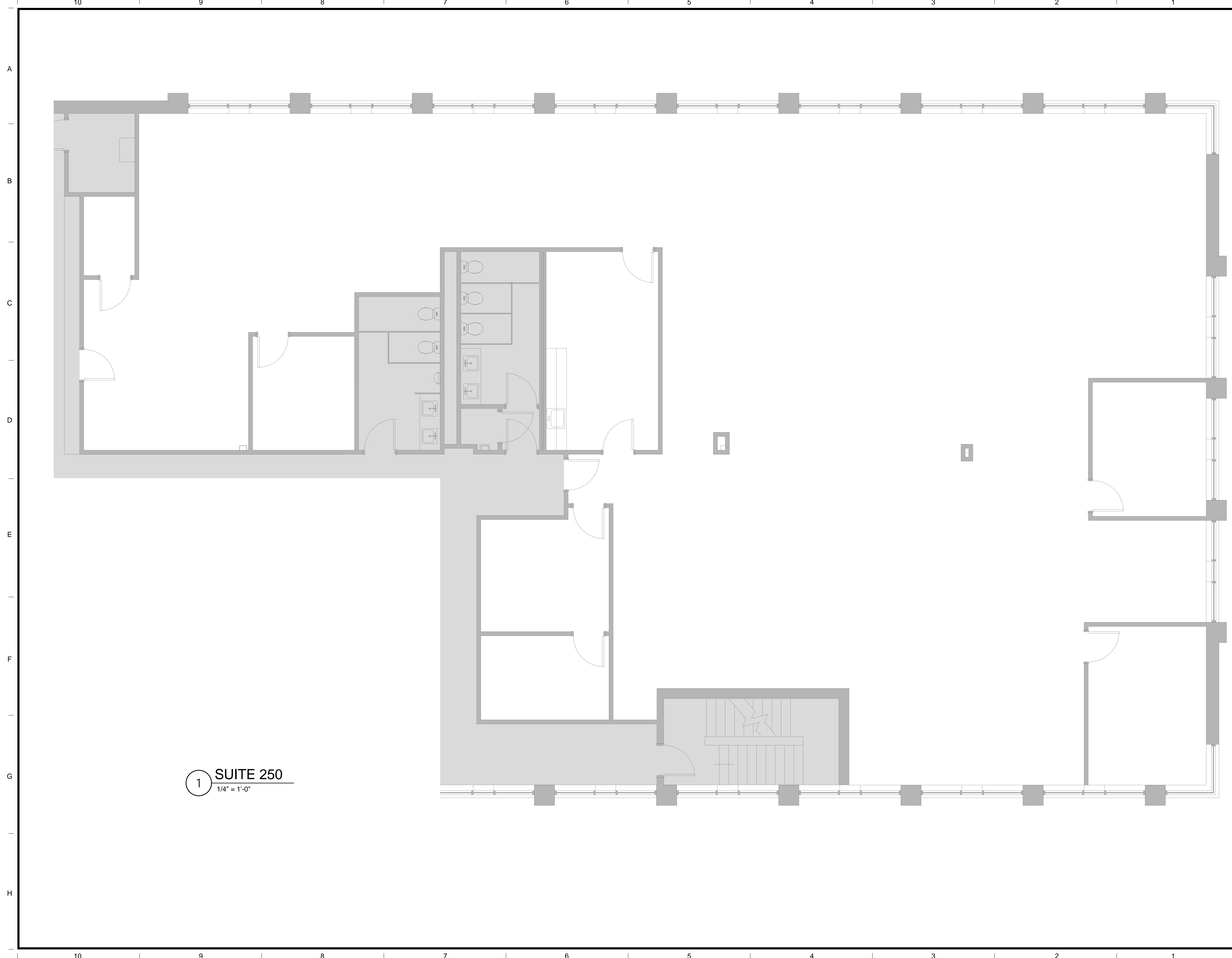
Drawing Title  
**SUITE 250**  
**6,183 RSF**

Issue Date:	
Project No:	Scale: 1/4" = 1'-0"
Project Manager:	Production Leader:
Project Architect: RO	Peer Reviewer: CL

Drawing Number  
**A1-7**

5/5/2016 4:30:09 PM

**1 SUITE 250**  
1/4" = 1'-0"





Brady Sullivan Properties  
670 N. Commercial Street  
Manchester, nh 03101  
603.622.6223

PROPERTY OF THE UNITED STATES GOVERNMENT  
COPYING, DISSEMINATION, OR DISTRIBUTION OF  
THESE DRAWINGS, PLANS, OR SPECIFICATIONS TO  
UNAUTHORIZED PERSONS IS PROHIBITED  
Do not remove this notice. Properly destroy documents  
when no longer  
needed.

© 2015 Brady Sullivan Properties

Owner  
**BRADY SULLIVAN  
PROPERTIES**  
MANCHESTER NH

Project  
**410 AMHERST STREET**  
NASHUA NH

Seals

Issues	
Date	Description

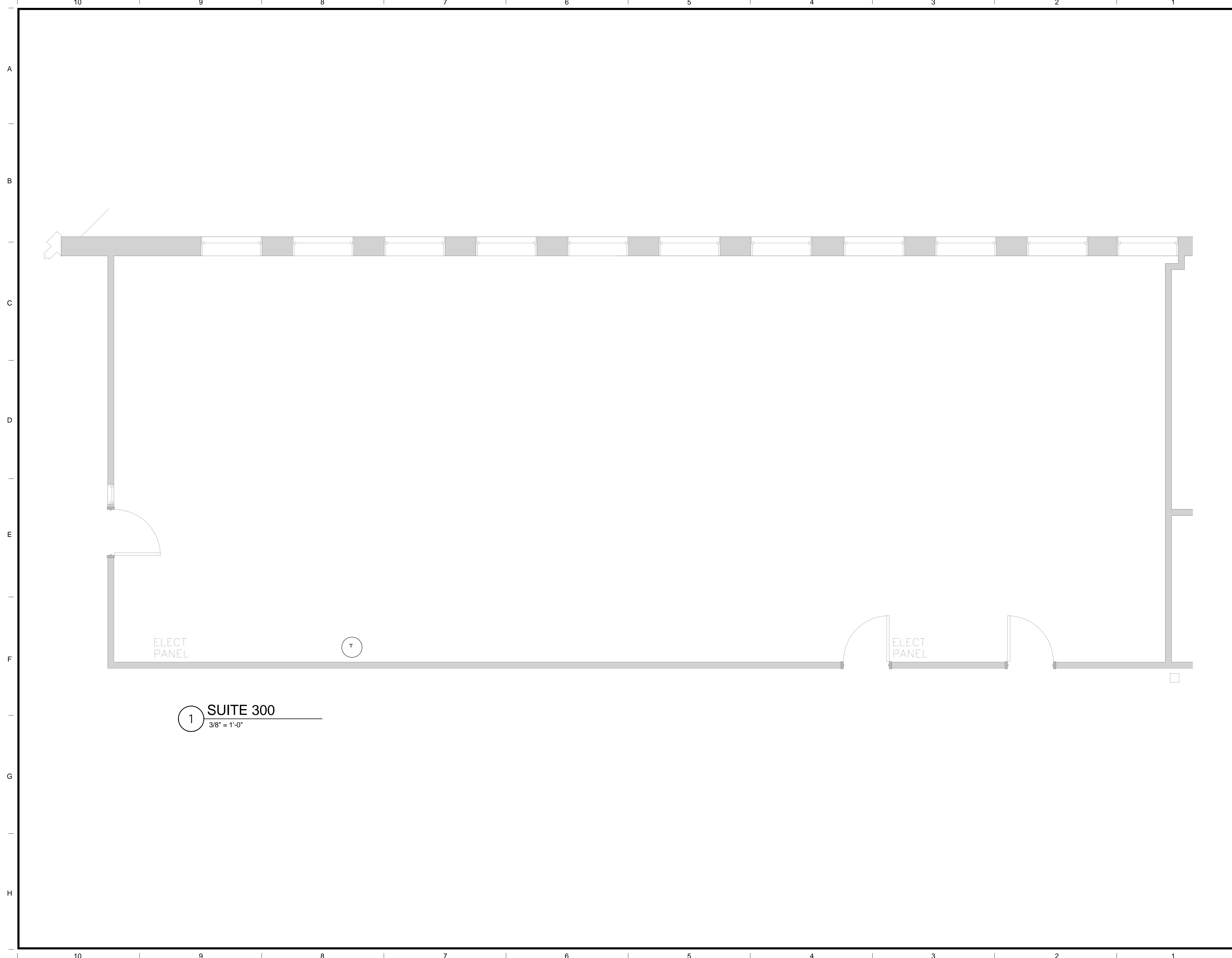
Revisions		
No.	Date	Description

Drawing Title  
**SUITE 300**  
**2,163 RSF**

Issue Date:	
Project No:	Scale: 3/8" = 1'-0"
Project Manager:	Production Leader:
Project Architect: CL	Peer Reviewer: CL

Drawing Number  
**A0.5**

5/5/2016 4:42:31 PM



ELECT  
PANEL

T

ELECT  
PANEL

1 SUITE 300  
3/8" = 1'-0"





Brady Sullivan Properties  
670 N. Commercial Street  
Manchester, nh 03101  
603.622.6223

PROPERTY OF THE UNITED STATES GOVERNMENT  
COPYING, DISSEMINATION, OR DISTRIBUTION OF  
THESE DRAWINGS, PLANS, OR SPECIFICATIONS TO  
UNAUTHORIZED PERSONS IS PROHIBITED  
Do not remove this notice. Properly destroy documents  
when no longer  
needed.

© 2015 Brady Sullivan Properties

Owner  
**BRADY SULLIVAN  
PROPERTIES**  
MANCHESTER NH

Project  
**410 AMHERST STREET**  
NASHUA NH

Seals

Issues	
Date	Description

Revisions		
No.	Date	Description

Drawing Title  
**SUITE 380**  
**3,332 RSF**

Issue Date:	
Project No:	Scale: 1/4" = 1'-0"
Project Manager:	Production Leader:
Project Architect: CL	Peer Reviewer: CL

Drawing Number  
**A0.6**



1 SUITE 380  
1/4" = 1'-0"