

10 9 8 7 6 5 4 3 2 1

A
B
C
D
E
F
G
H

LEGEND			
	NOT IN SCOPE		PROPOSED ITEMS (HEAVY LINE WEIGHT)
	EXISTING ITEMS		EXISTING DOOR AND FRAME TO REMAIN
	NEW DOOR AND FRAME		DEMO ITEMS



1 SUITE 101
1/4" = 1'-0"



Brady Sullivan Properties
670 N. Commercial Street
Manchester, nh 03101
603.622.6223



Owner
BRADY SULLIVAN PROPERTIES
MANCHESTER NH

Project
15 TRAFALGAR SQUARE, NASHUA, NH
NASHUA NH

Seals

Issues	
Date	Description

Revisions	
No.	Date

Drawing Title
SUITE 101
4,687 RSF

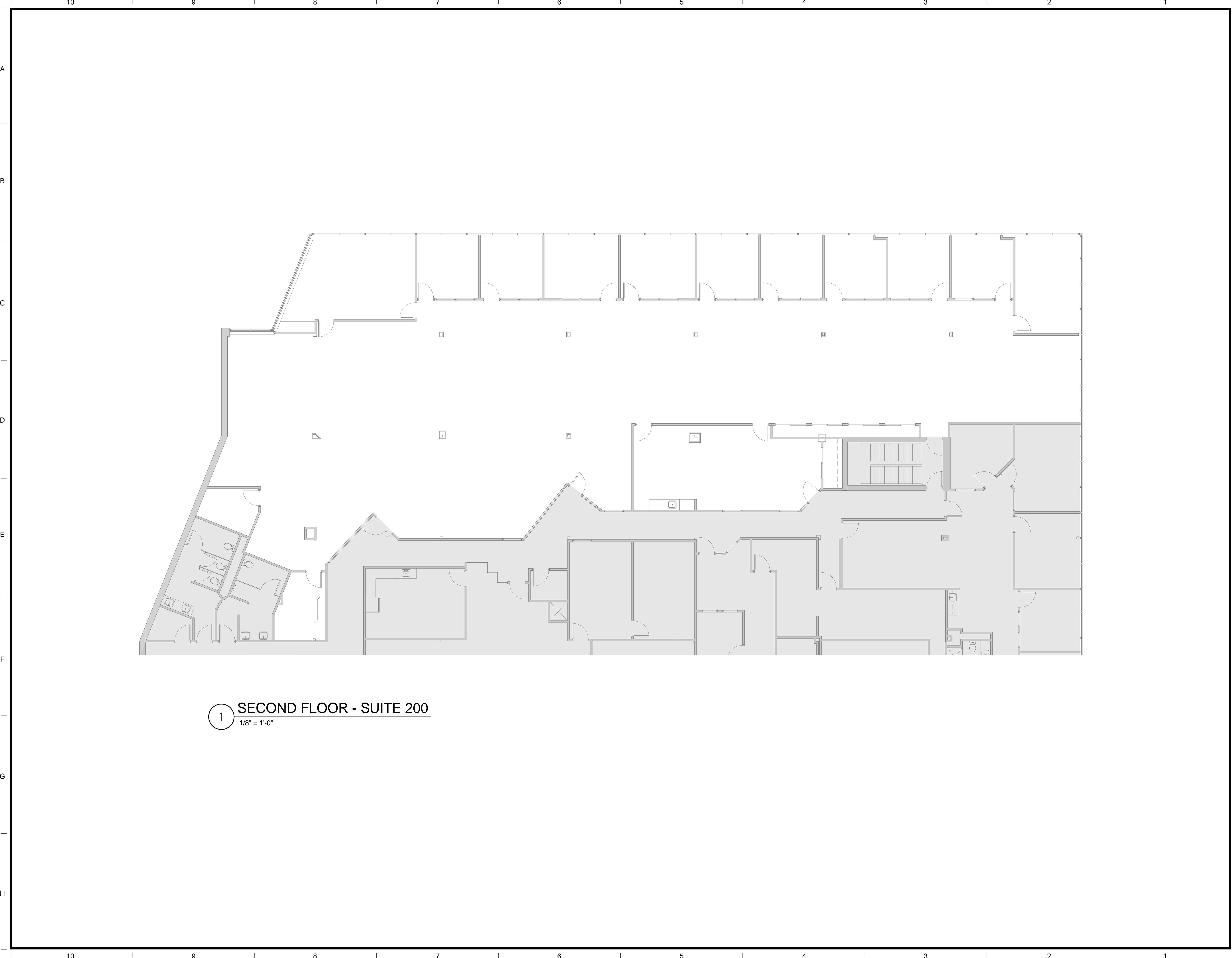
Issue Date:	4-24-2017
Project No:	Scale: As indicated
Project Manager:	Production Leader:
Project Architect: CL	Peer Reviewer: CL

Drawing Number
A0.0

4/24/2017 4:27:14 PM

DISCLAIMER: ALL BUILDOUT IS BASED ON BRADY SULLIVAN PROPERTIES "CONSTRUCTION STANDARDS". BRADY SULLIVAN PROPERTIES RESERVES THE RIGHT TO ISSUE A CHANGE ORDER FOR ADDITIONAL WORK NOT INCLUDED IN DRAWINGS.

10 9 8 7 6 5 4 3 2 1



1 SECOND FLOOR - SUITE 200
1/8" = 1'-0"

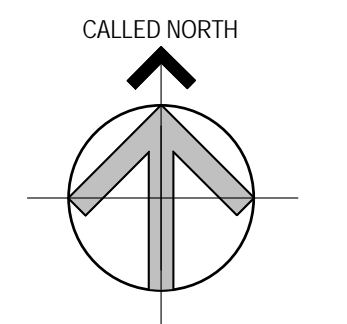


Brady Sullivan Properties
670 N. Commercial Street
Manchester, nh 03101
603.622.6223



Owner
BRADY SULLIVAN PROPERTIES
MANCHESTER, NH

Project
15 TRAFALGAR SQUARE, NASHUA, NH
NASHUA, NH



Seals

Issues	
Date	Description

Revisions		
No.	Date	Description

Drawing Title
SUITE 200
10,202 RSF

Issue Date:	4-24-2017
Project No:	Scale: 1/8" = 1'-0"
Project Manager:	BA Production Leader: RO
Project Architect:	RO Peer Reviewer: CP

Drawing Number
A0.8

4/24/2017 4:24:55 PM



Brady Sullivan Properties
670 N. Commercial Street
Manchester, nh 03101
603.622.6223



Owner
**BRADY SULLIVAN
PROPERTIES**
MANCHESTER,
NH

Project
**15 TRAFALGAR
SQUARE, NASHUA, NH**
NASHUA, NH

Seals

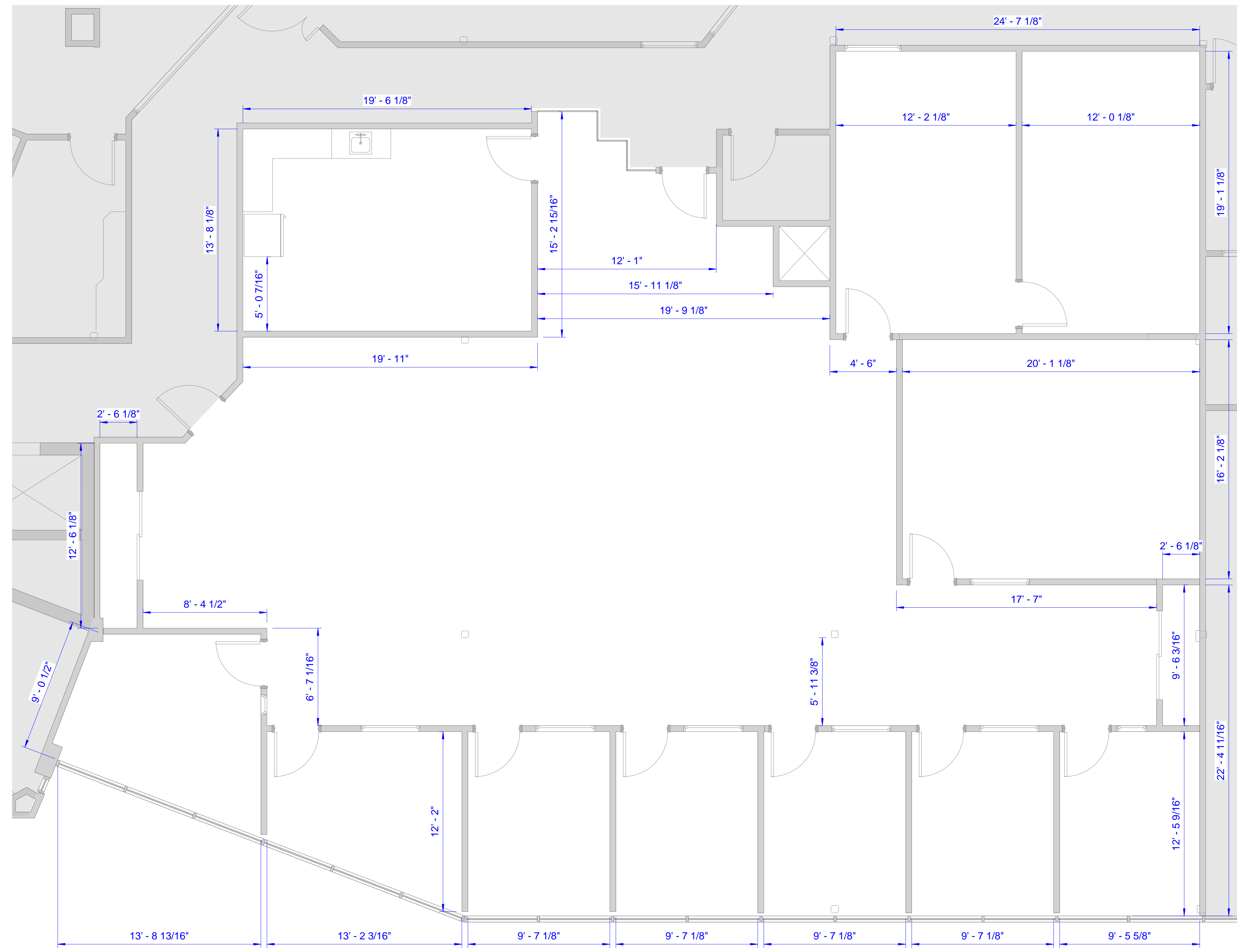
Issues	
Date	Description

Revisions		
No.	Date	Description

Drawing Title
SUITE 201
4,458 RSF

Issue Date:	4-24-2017
Project No:	Scale: 1/4" = 1'-0"
Project Manager:	BA Production Leader: RO
Project Architect:	RO Peer Reviewer: CP

Drawing Number
A0.5



1 SECOND FLOOR - SUITE 201
1/4" = 1'-0"

10 9 8 7 6 5 4 3 2 1



Brady Sullivan Properties
670 N. Commercial Street
Manchester, nh 03101
603.622.6223



Owner
**BRADY SULLIVAN
PROPERTIES**
MANCHESTER,
NH

Project
**15 TRAFALGAR
SQUARE, NASHUA, NH**
NASHUA, NH

Seals

Issues	
Date	Description

Revisions		
No.	Date	Description

Drawing Title
SUITE 202

3,225 RSF

Issue Date: 4-24-2017

Project No: Scale: As indicated

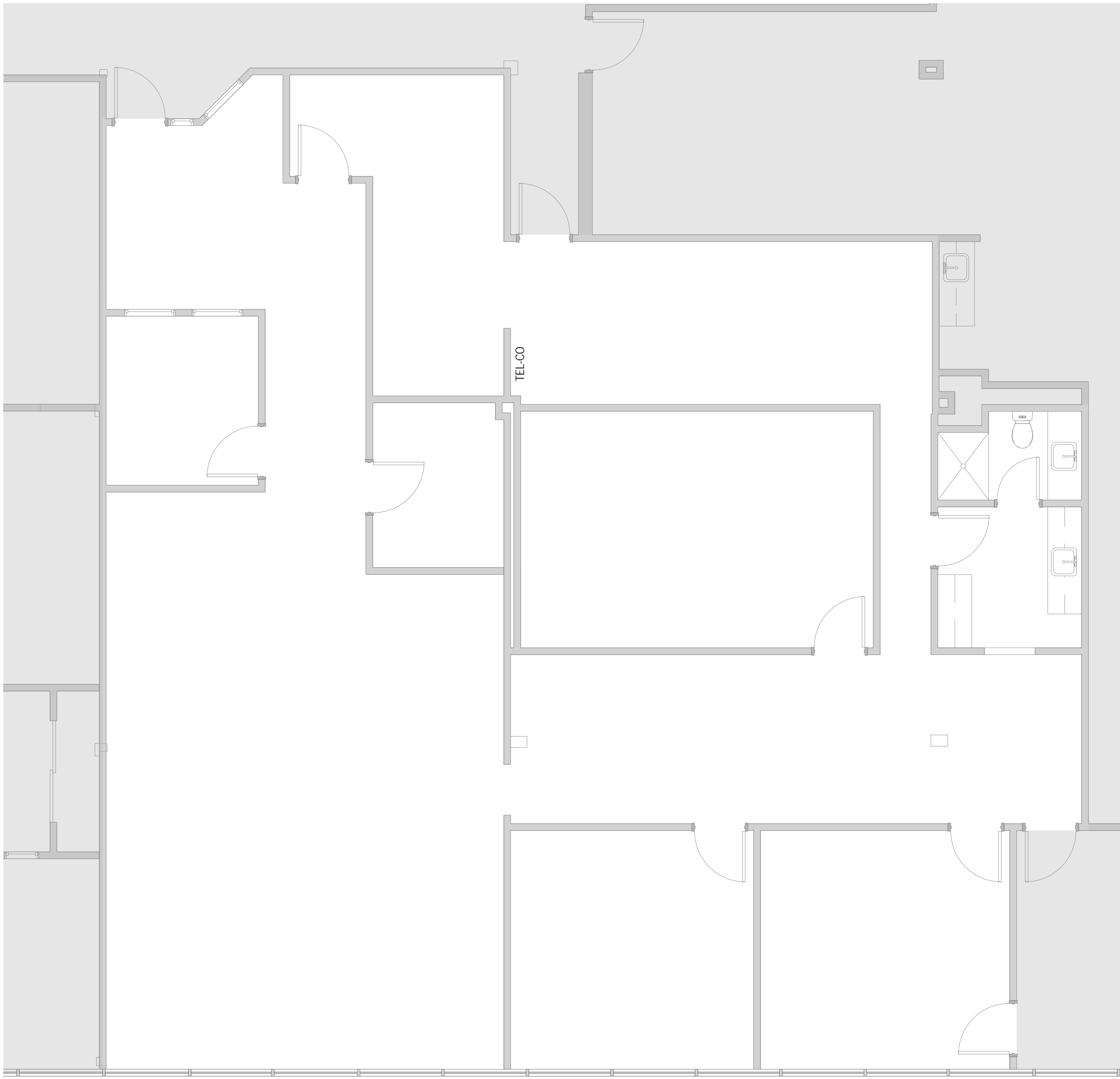
Project Manager: BA Production Leader: RO

Project Architect: RO Peer Reviewer: CP

Drawing Number
A0.6

LEGEND

	NOT IN SCOPE		PROPOSED ITEMS (HEAVY LINE WEIGHT)
	EXISTING ITEMS		EXISTING DOOR AND FRAME TO REMAIN
	NEW DOOR AND FRAME		DEM. ITEMS



1 SECOND FLOOR - SUITE 202
1/4" = 1'-0"

4/24/2017 4:22:33 PM

10 9 8 7 6 5 4 3 2 1

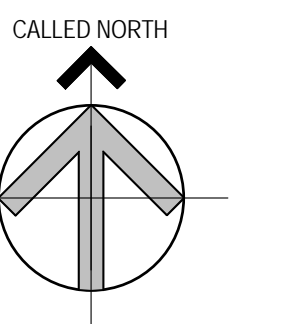


Brady Sullivan Properties
670 N. Commercial Street
Manchester, nh 03101
603.622.6223



Owner
**BRADY SULLIVAN
PROPERTIES**
MANCHESTER,
NH

Project
**15 TRAFALGAR
SQUARE, NASHUA, NH**
NASHUA, NH



Seals

Issues	
Date	Description

Revisions		
No.	Date	Description

Drawing Title
SUITE 203
2,360 RSF

Issue Date:	4-24-2017
Project No:	Scale: As indicated
Project Manager:	BA Production Leader: RO
Project Architect:	RO Peer Reviewer: CP

Drawing Number
A0.7

LEGEND

	NOT IN SCOPE		PROPOSED ITEMS (HEAVY LINE WEIGHT)
	EXISTING ITEMS		EXISTING DOOR AND FRAME TO REMAIN
	NEW DOOR AND FRAME		DEMOM ITEMS

1
1/4" = 1'-0"
SECOND FLOOR - SUITE 203

