



Brady Sullivan Properties  
670 N. Commercial Street  
Manchester, nh 03101  
603.622.6223



Owner  
**BRADY SULLIVAN  
PROPERTIES**  
MANCHESTER  
NH

Project  
**1050 PERIMETER**  
MANCHESTER, NH

Seals  
PROGRESS PRINT

| Issues |             |
|--------|-------------|
| Date   | Description |
|        |             |
|        |             |
|        |             |
|        |             |

| Revisions |      |             |
|-----------|------|-------------|
| No.       | Date | Description |
|           |      |             |
|           |      |             |
|           |      |             |
|           |      |             |

Drawing Title  
**SUITE 202**

**7,200 SQFT**

Issue Date: 4-24-2017

Project No: Scale: As indicated

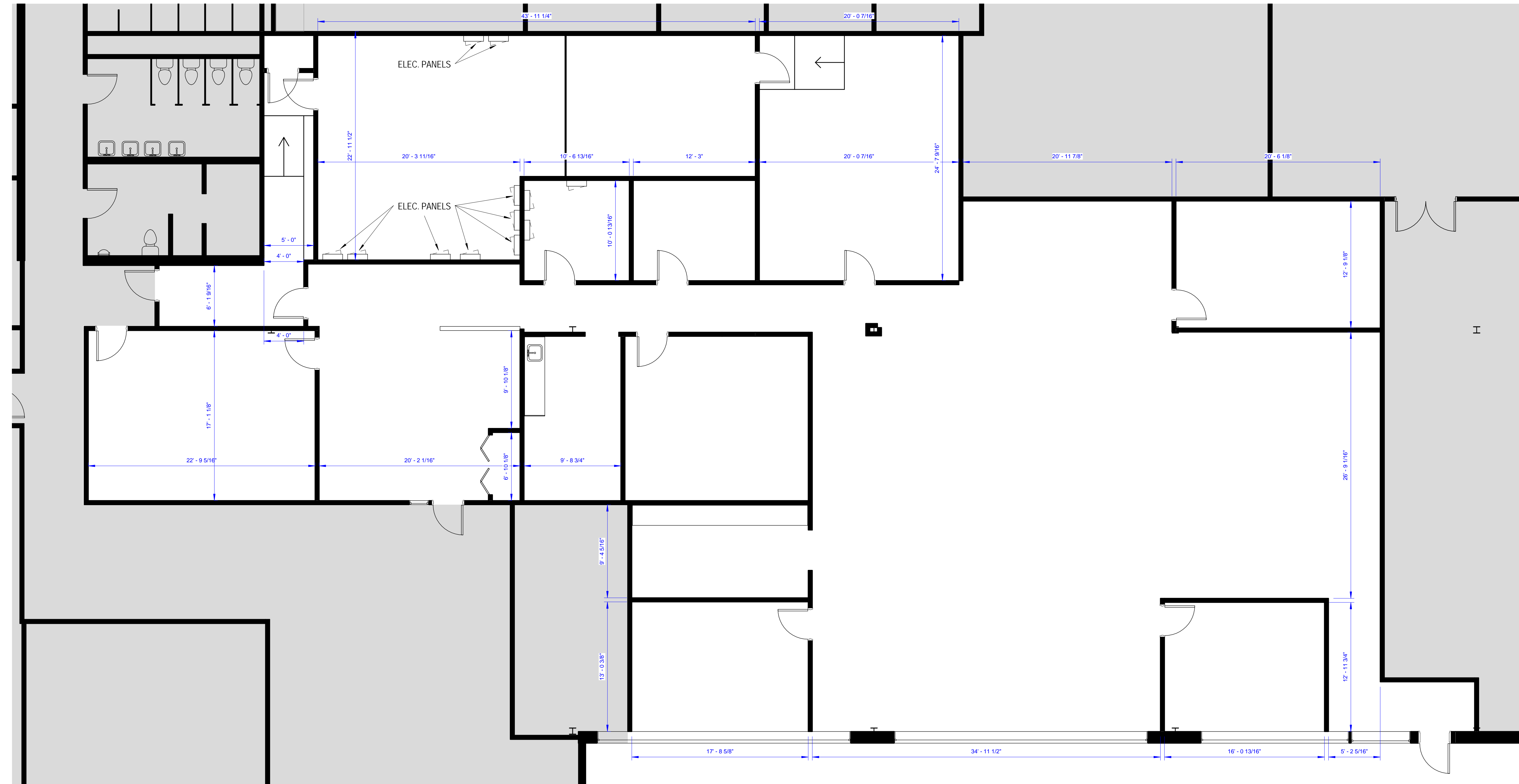
Project Manager: Production Leader:

Project Architect: Peer Reviewer:

Drawing Number

**A.116**

| LEGEND |                    |  |                                    |
|--------|--------------------|--|------------------------------------|
|        | NOT IN SCOPE       |  | PROPOSED ITEMS (HEAVY LINE WEIGHT) |
|        | EXISTING ITEMS     |  | DEMO ITEMS                         |
|        | NEW DOOR AND FRAME |  | EXISTING DOOR AND FRAME TO REMAIN  |



1 SUITE 202  
3/16" = 1'-0"

**DISCLAIMER:** ALL BUILDOUT IS BASED ON BRADY SULLIVAN PROPERTIES "CONSTRUCTION STANDARDS". BRADY SULLIVAN PROPERTIES RESERVES THE RIGHT TO ISSUE A CHANGE ORDER FOR ADDITIONAL WORK NOT INCLUDED IN DRAWINGS.

4/24/2017 4:16:12 PM